

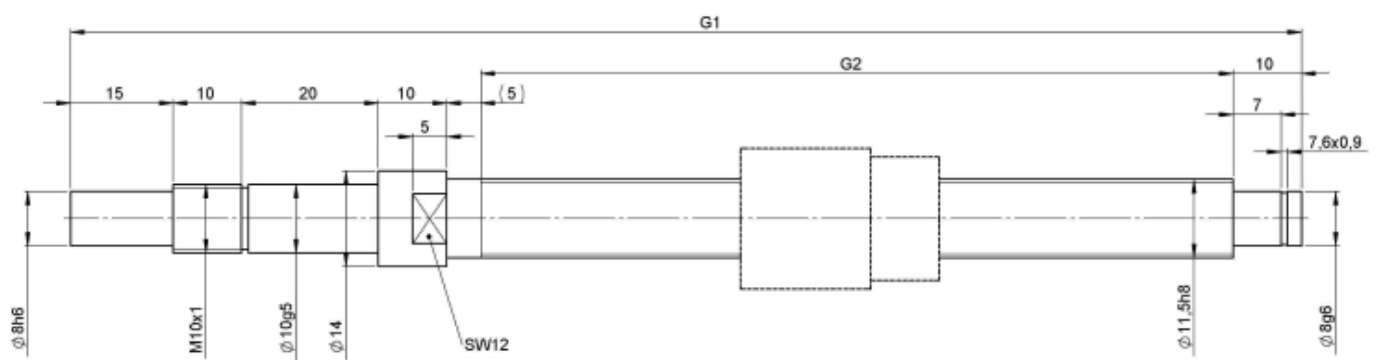
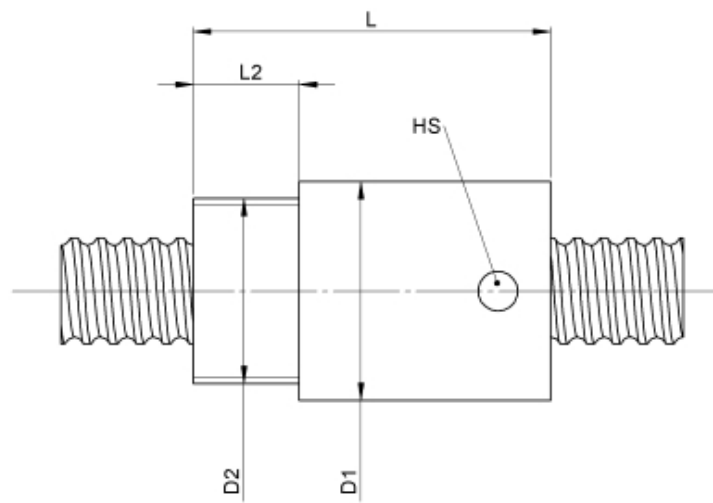
1112/1.12.260.330

DESCRIPTION

- Nut Series 1112 with [internal ball return](#), Cylindrical nut with connecting thread and 4-point-contact, without wipers
- Single start ball thread, ground execution according to accuracy class P1 - P5
- Miniature ball screws also available with axial play



TECHNICAL DATA AND DIMENSIONS



| | | | | | | |
|------------------|------|----|--------|-------------------------------------|-------|---------------|
| Series | | | 1112 | Friction torque FROM | [Ncm] | 3,0 |
| Nominal diameter | [mm] | dN | 12 | Friction torque TO | [Ncm] | 3,0 |
| Lead | [mm] | P | 1 | Accuracy | | P |
| Shaft style | | | B | Preload/backlash free/with backlash | | backlash free |
| Nominal stroke | [mm] | | 200 | Nut length | [mm] | L 24 |
| Overall length | [mm] | G1 | 330 | Thread length | [mm] | L2 10 |
| Thread length | [mm] | G2 | 260 | Dynamic load capacity | [kN] | Ca 1,10 |
| Ball circles | | i | 1x3 | Static load capacity | [kN] | C0a 2,00 |
| Ball diameter | [mm] | dW | 0,8 | Diameter for pin wrench | [mm] | HS 3 |
| DN-value | | | 120000 | Pilot diameter | [mm] | D1 20,5 |
| No. of starts | | | 1 | Thread diameter | [mm] | D2 M18x1 |

August Steinmeyer GmbH & Co. KG | info@steinmeyer.com

Drive Technology, Ball Screws, Precision Ball Screws, Miniature Ball Screws, Ultra Thrust Ball Screws, Rotating Nuts, Cooled Ball Screws, Precision Lead Screws, Differential Rolled Screws, Rolled Ball Screws