

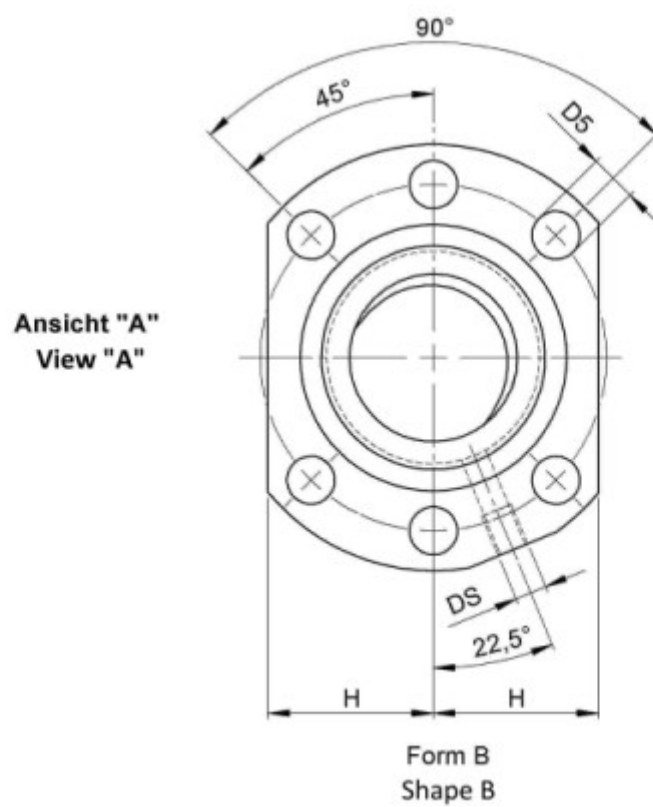
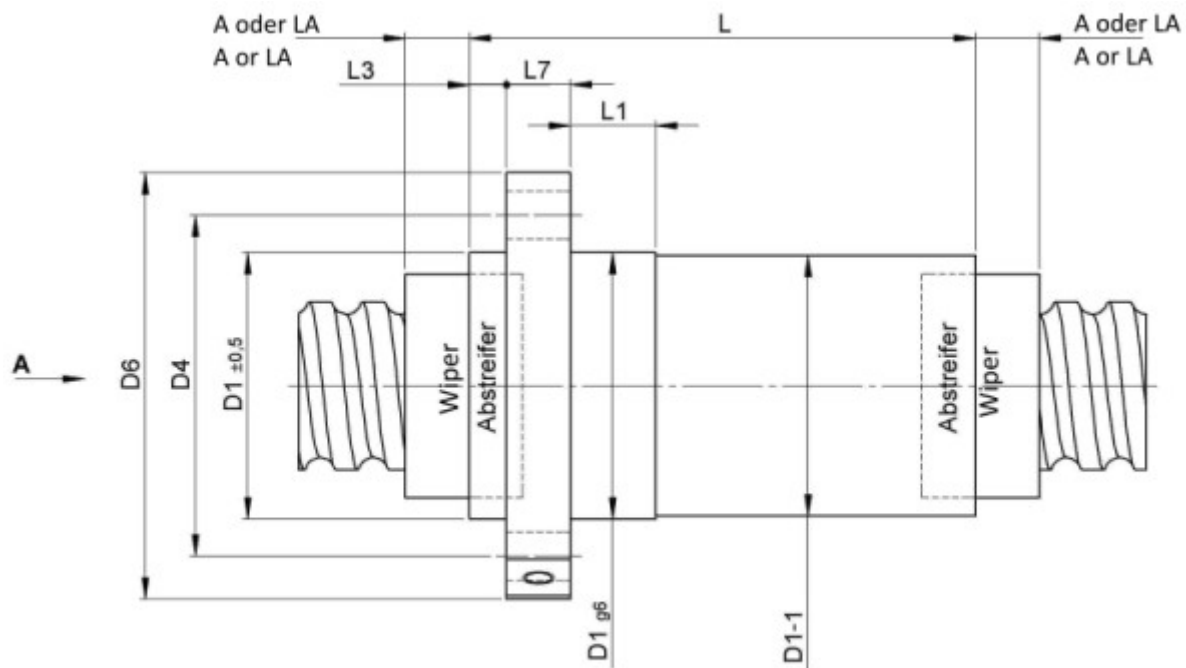
1416/2.25.1,5.3

DESCRIPTION

- Nut Series 1416 with [internal ball return](#), Flange single nut with 4-point-contact with standard synthetic wipers on both ends
- Nut shape according to DIN for assembly by flange
- Single start ball thread, ground execution according to accuracy class P1 - P5



TECHNICAL DATA AND DIMENSIONS



Series			1416	Friction torque FROM		[Ncm]	0,6
Nominal diameter	[mm]	dN	25	Friction torque TO		[Ncm]	5,0
Lead	[mm]	P	2	Accuracy			P
Ball circles		i	1x3	Nut length		[mm]	L 43
Ball diameter	[mm]	dW	1,5	Dynamic load capacity		[kN]	Ca 3,50
DN-value			120000	Static load capacity		[kN]	C0a 7,80
No. of starts			1	Pilot diameter		[mm]	D1 40

August Steinmeyer GmbH & Co. KG | Riedstraße 7 | 72458 Albstadt | Phone +49 (0) 7431 1288-0 | Fax +49 (0) 7431 1288-89 | info@steinmeyer.com

Drive Technology, Ball Screws, Precision Ball Screws, Miniature Ball Screws, Ultra Thrust Ball Screws, Rotating Nuts, Cooled Ball Screws, Precision Lead Screws, Differential Rolled Screws, Rolled Ball Screws