

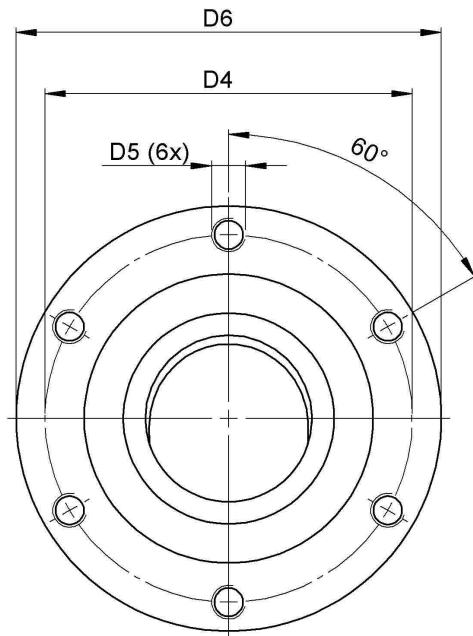
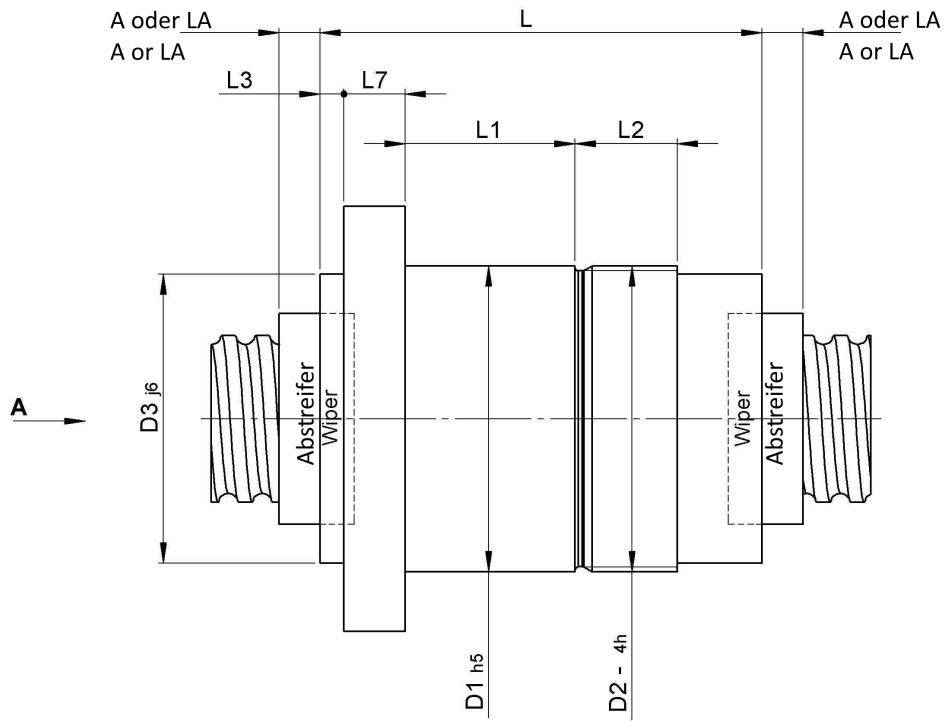
3424/30.60.9.8

DESCRIPTION

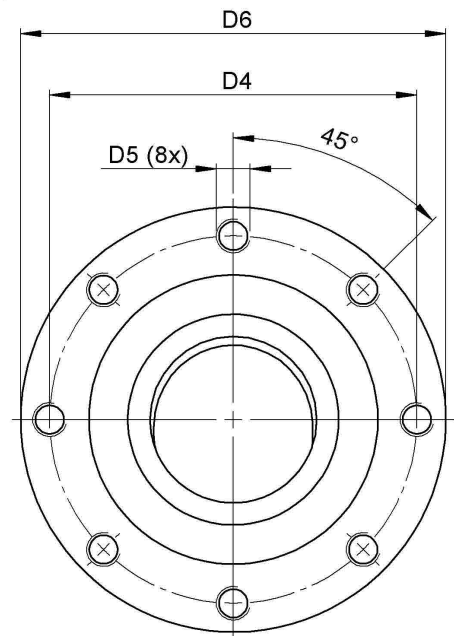
- Nut Series 3424 with [external ball return](#), Flange single nut with 4-point-contact with standard wipers on both ends
- Nut shape design for direct assembly of angular bearing, locknut and pulley
- Multiple start ball thread, ground execution according to accuracy class P1 - P5



TECHNICAL DATA AND DIMENSIONS



Nenndurchmesser
25 - 32mm
Nominal diameter
25 - 32mm



Nenndurchmesser
40 - 63mm
Nominal diameter
40 - 63mm

Ansicht "A"
View "A"

Series			3424	Friction torque TO			[Ncm]	514,0
Nominal diameter	[mm]	dN	60	Nut length	[mm]	L		151
Lead	[mm]	P	30	Thread length	[mm]	L2		25
Ball circles		i	4+4	Dynamic load capacity		[kN]	Ca	213,50
Ball diameter	[mm]	dW	9	Static load capacity		[kN]	C0a	491,00
DN-value			160000	Pilot diameter		[mm]	D1	100
No. of starts			2	Thread diameter		[mm]	D2	M100x2
Friction torque FROM		[Ncm]	308,4					


**DIDN'T FIND WHAT YOU'RE LOOKING FOR, NEED ADVICE,
OR ALREADY HAVE A SOLUTION IN MIND?**

Make use of our technical expertise for product selection and system design:

Name*

Company*

Country*

Phone*

E-Mail*

How did you hear about us?

- ☐ spare parts
- ☐ brochure
- ☐ recommendation

- ☐ Google / other web search
- ☐ fair / event
- ☐ press
- ☐ social media
- ☐ already known

Message

send

FAQ – BALL SCREWS WITH CONNECTION THREAD NUT

ARE STANDARD VARIANTS AVAILABLE?

Yes, we offer standard versions of ball screws with connection thread nuts in diameters ranging from 3 mm to 6 mm. Two different shaft types are available. Alternatively, the standard nuts can be combined with a shaft customized to your specifications.

CAN I GET A BALL SCREW MADE ACCORDING TO MY DRAWING?

Manufacturing ball screws based on your designs and drawings is possible without any problems. Alternatively, our team is happy to work with you to develop a tailored solution that meets your specific requirements.

WHAT MATERIALS ARE AVAILABLE?

In addition to standard steels, our portfolio includes a wide range of materials, such as various types of stainless steel, to accommodate different application needs. Balls are available made of steel, stainless steel or ceramic.

WHAT KIND OF LUBRICATION IS USED?

A standard lubricant selected based on years of experience can be applied. Depending on the application, it is provided in quantities suitable for regular re-lubrication intervals or lifetime lubrication. Furthermore, we have extensive expertise in selecting oils or greases for special applications, such as aerospace, food-grade environments, clean rooms, or vacuum.

In special configurations, even lubricant-free versions are possible.

ARE CONNECTION THREAD NUTS PRELOADED?

The preload of the ball screws can be individually selected at the time of order, depending on your application. We offer a range from ball screws with backlash, backlash-free and up to three different levels of preload.

ARE CAD MODELS AVAILABLE FOR DOWNLOAD?

We will gladly provide you with a model of the nut geometry. Please contact us via the contact form to request it.

August Steinmeyer GmbH & Co. KG | info@steinmeyer.com

Drive Technology, Ball Screws, Precision Ball Screws, Miniature Ball Screws, Ultra Thrust Ball Screws, Rotating Nuts, Cooled Ball Screws, Precision Lead Screws, Differential Rolled Screws, Rolled Ball Screws
