

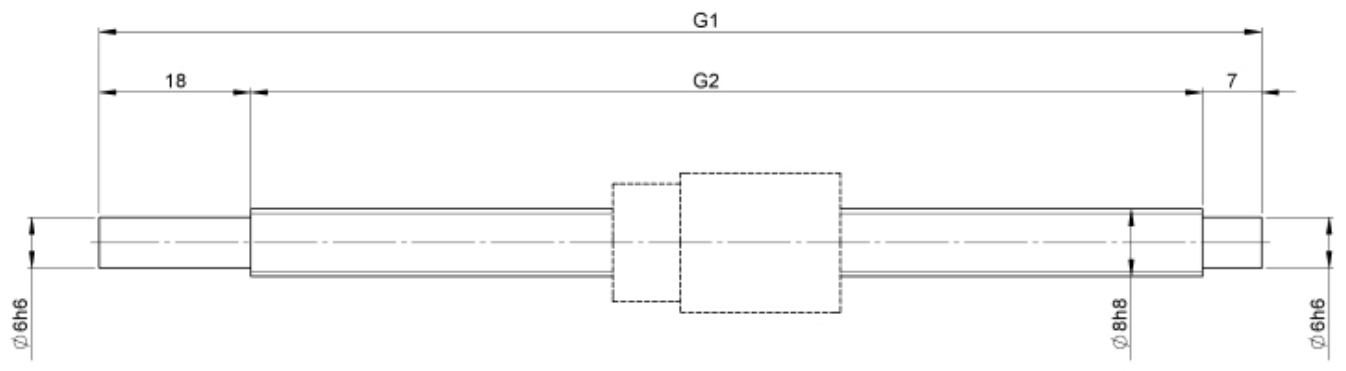
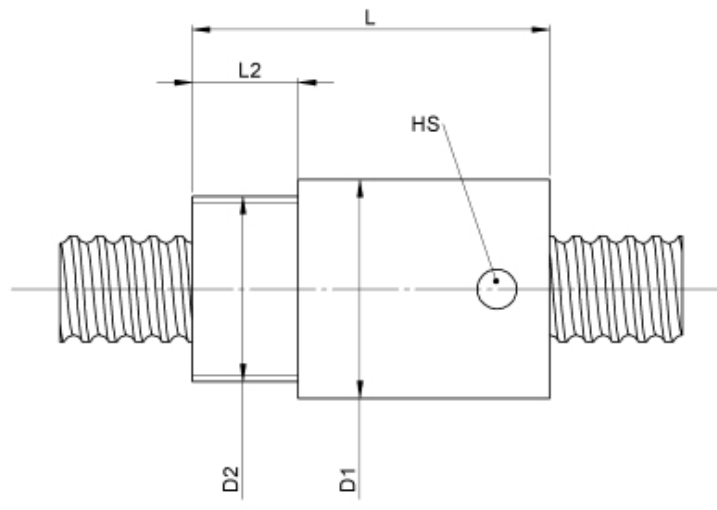
1112/1,5.8.145.170

DESCRIPTION

- Nut Series 1112 with **internal ball return**, Cylindrical nut with connecting thread and 4-point-contact, without wipers
- Single start ball thread, ground execution according to accuracy class P1 - P5
- Miniature ball screws also available with axial play



TECHNICAL DATA AND DIMENSIONS



Series			1112	Friction torque FROM	[Ncm]		0,5
Nominal diameter	[mm]	dN	8	Friction torque TO	[Ncm]		0,5
Lead	[mm]	P	1,5	Accuracy			P
Shaft style			A	Preload/backlash free/with backlash			with backlash
Nominal stroke	[mm]		100	Nut length	[mm]	L	22
Overall length	[mm]	G1	170	Thread length	[mm]	L2	8
Thread length	[mm]	G2	145	Dynamic load capacity	[kN]	Ca	1,20
Ball circles		i	1x3	Static load capacity	[kN]	C0a	1,50
Ball diameter	[mm]	dW	1	Diameter for pin wrench	[mm]	HS	3
DN-value			120000	Pilot diameter	[mm]	D1	16,5
No. of starts			1	Thread diameter	[mm]	D2	M14x1

August Steinmeyer GmbH & Co. KG | Riedstraße 7 | 72458 Albstadt | Phone +49 (0) 7431 1288-0 | Fax +49 (0) 7431 1288-89 | info@steinmeyer.com

Drive Technology, Ball Screws, Precision Ball Screws, Miniature Ball Screws, Ultra Thrust Ball Screws, Rotating Nuts, Cooled Ball Screws, Precision Lead Screws, Differential Rolled Screws, Rolled Ball Screws