

# 1112/1.12.310.380

---

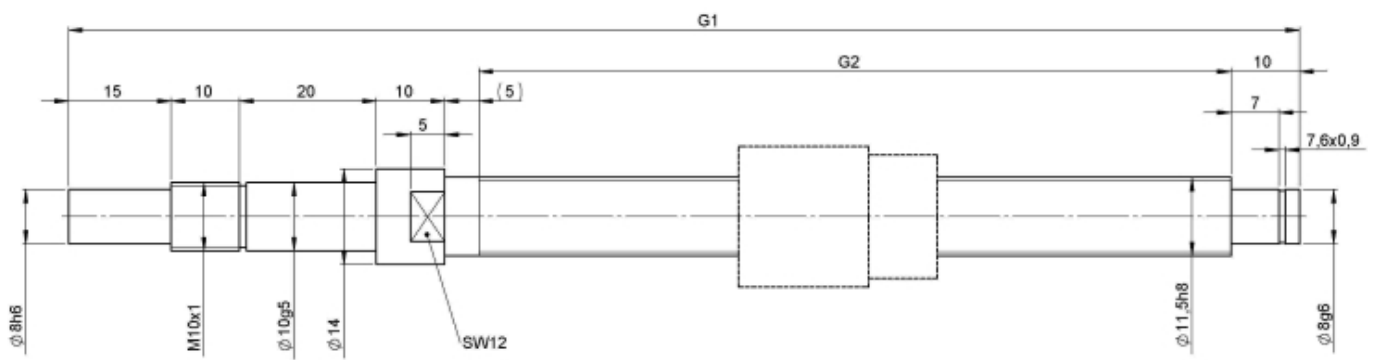
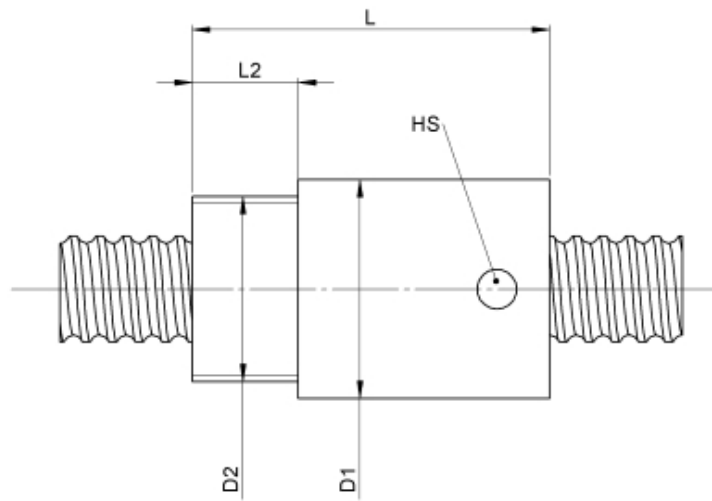
## DESCRIPTION

- Nut Series 1112 with **internal ball return**, Cylindrical nut with connecting thread and 4-point-contact, without wipers
- Single start ball thread, ground execution according to accuracy class P1 - P5
- Miniature ball screws also available with axial play



---

## TECHNICAL DATA AND DIMENSIONS



Series			1112	Friction torque FROM	[Ncm]		3,0
Nominal diameter	[mm]	dN	12	Friction torque TO	[Ncm]		3,0
Lead	[mm]	P	1	Accuracy			P
Shaft style			B	Preload/backlash free/with backlash			backlash free
Nominal stroke	[mm]		250	Nut length	[mm]	L	24
Overall length	[mm]	G1	380	Thread length	[mm]	L2	10
Thread length	[mm]	G2	310	Dynamic load capacity	[kN]	Ca	1,10
Ball circles		i	1x3	Static load capacity	[kN]	C0a	2,00
Ball diameter	[mm]	dW	0,8	Diameter for pin wrench	[mm]	HS	3
DN-value			120000	Pilot diameter	[mm]	D1	20,5
No. of starts			1	Thread diameter	[mm]	D2	M18x1

August Steinmeyer GmbH & Co. KG | Riedstraße 7 | 72458 Albstadt | Phone +49 (0) 7431 1288-0 | Fax +49 (0) 7431 1288-89 | [info@steinmeyer.com](mailto:info@steinmeyer.com)

Drive Technology, Ball Screws, Precision Ball Screws, Miniature Ball Screws, Ultra Thrust Ball Screws, Rotating Nuts, Cooled Ball Screws, Precision Lead Screws, Differential Rolled Screws, Rolled Ball Screws