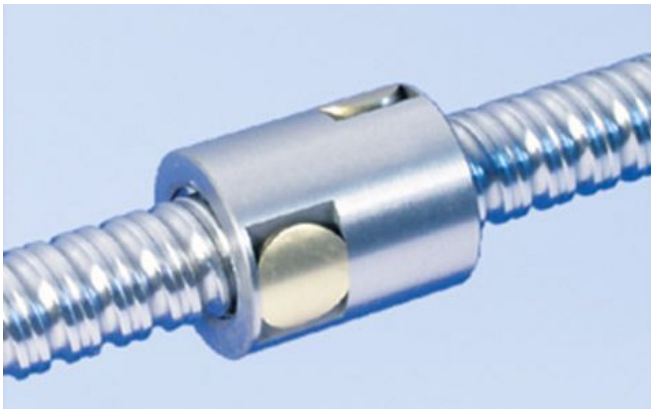


# 1214/0,5.3.44.85

---

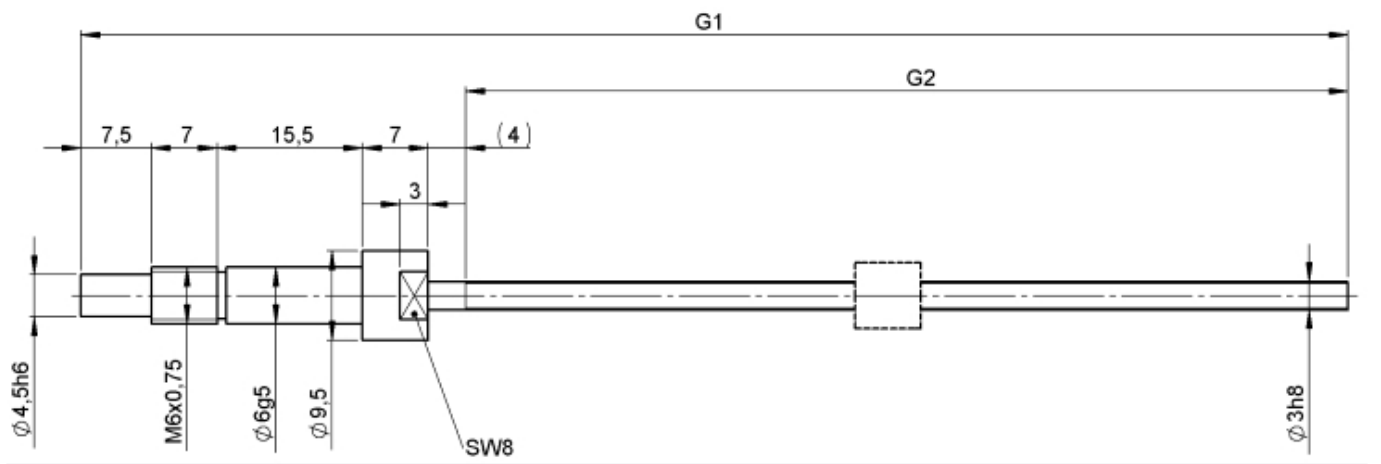
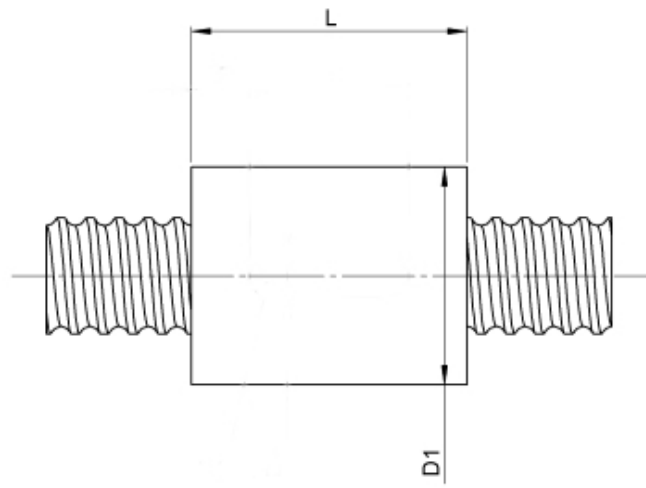
## DESCRIPTION

- Nut Series 1214 with [internal ball return](#)
- Cylindrical nut with 4-point-contact, without wipers
- Nut shape design for assembling in a housing
- Single start ball thread, ground execution according to accuracy class P1 - P5
- Miniature ball screws also available with axial play



---

## TECHNICAL DATA AND DIMENSIONS



Series			1214	No. of starts			1
Nominal diameter	[mm]	dN	3	Friction torque FROM	[Ncm]	1,0	
Lead	[mm]	P	0,5	Friction torque TO	[Ncm]	1,0	
Shaft style			B	Accuracy			P
Nominal stroke			20	Preload/backlash free/with backlash			backlash free
Overall length	[mm]	G1	85	Nut length	[mm]	L	7
Thread length	[mm]	G2	44	Dynamic load capacity	[kN]	Ca	0,09
Ball circles		i	1x2	Static load capacity	[kN]	C0a	0,09
Ball diameter	[mm]	dW	0,6	Pilot diameter	[mm]	D1	7
DN-value			120000	Pilot diameter tolerance	[mm]	h6	

August Steinmeyer GmbH & Co. KG | Riedstraße 7 | 72458 Albstadt | Phone +49 (0) 7431 1288-0 | Fax +49 (0) 7431 1288-89 | [info@steinmeyer.com](mailto:info@steinmeyer.com)

Drive Technology, Ball Screws, Precision Ball Screws, Miniature Ball Screws, Ultra Thrust Ball Screws, Rotating Nuts, Cooled Ball Screws, Precision Lead Screws, Differential Rolled Screws, Rolled Ball Screws