

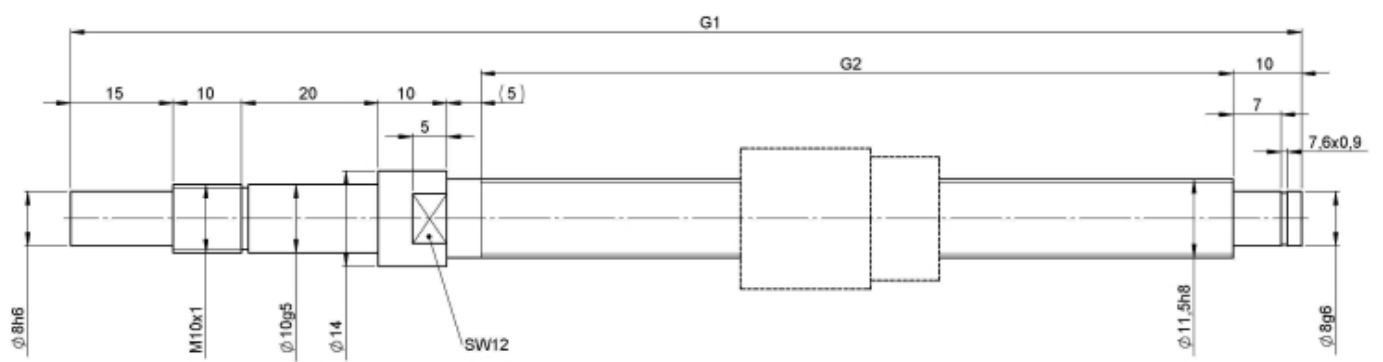
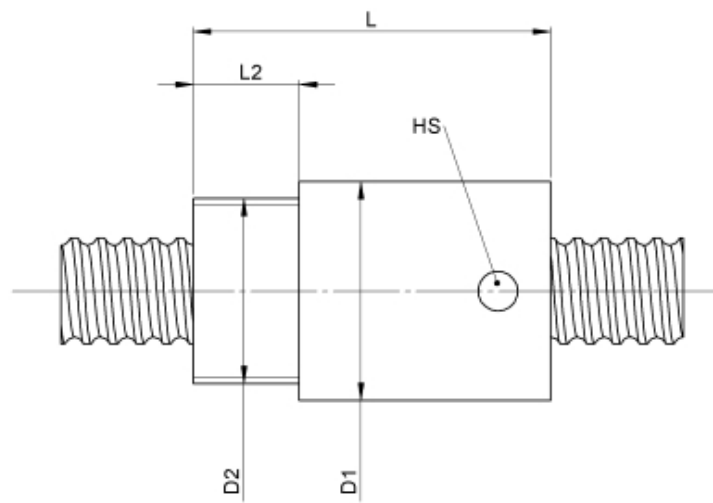
1112/5.12.210.280

DESCRIPTION

- Nut Series 1112 with [internal ball return](#), Cylindrical nut with connecting thread and 4-point-contact, without wipers
- Single start ball thread, ground execution according to accuracy class P1 - P5
- Miniature ball screws also available with axial play



TECHNICAL DATA AND DIMENSIONS



Series			1112	No. of starts			1
Nominal diameter	[mm]	dN	12	Friction torque FROM	[Ncm]		3,0
Lead	[mm]	P	5	Friction torque TO	[Ncm]		3,0
Shaft style			B	Accuracy			P
Nominal stroke			150	Preload/backlash free/with backlash			backlash free
Overall length	[mm]	G1	280	Nut length	[mm]	L	36
Thread length	[mm]	G2	210	Dynamic load capacity	[kN]	Ca	3,60
Ball circles		i	1x3	Static load capacity	[kN]	C0a	4,30
Ball diameter	[mm]	dW	2	Pilot diameter	[mm]	D1	22,5
DN-value			120000				

August Steinmeyer GmbH & Co. KG | Riedstraße 7 | 72458 Albstadt | Phone +49 (0) 7431 1288-0 | Fax +49 (0) 7431 1288-89 | info@steinmeyer.com

Drive Technology, Ball Screws, Precision Ball Screws, Miniature Ball Screws, Ultra Thrust Ball Screws, Rotating Nuts, Cooled Ball Screws, Precision Lead Screws, Differential Rolled Screws, Rolled Ball Screws