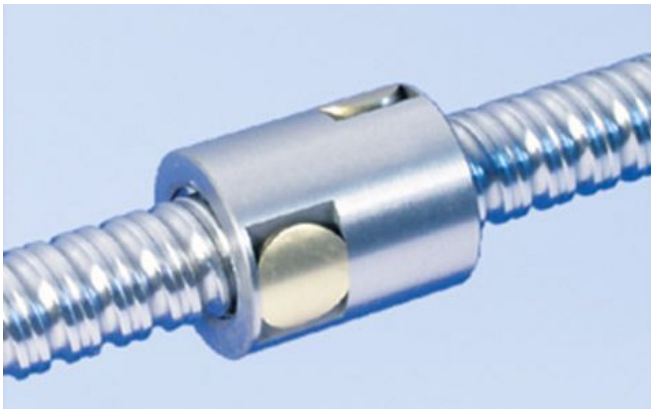


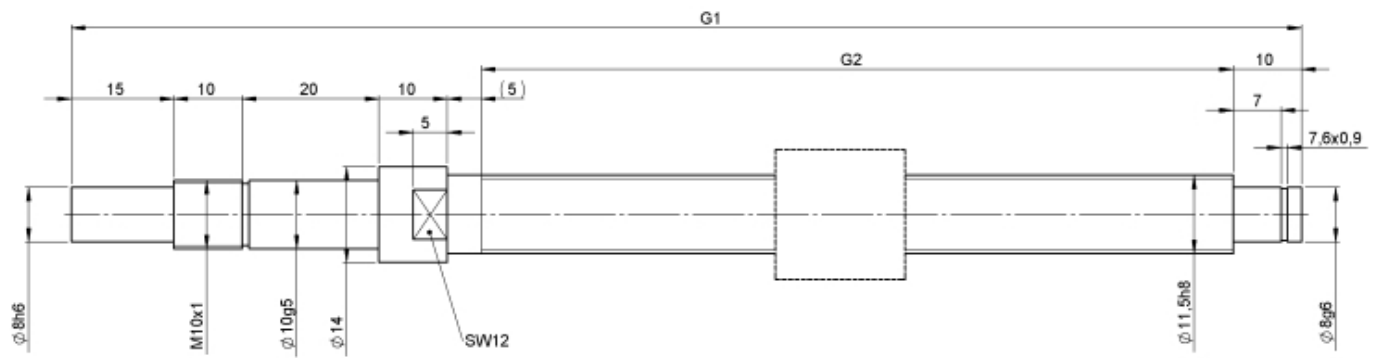
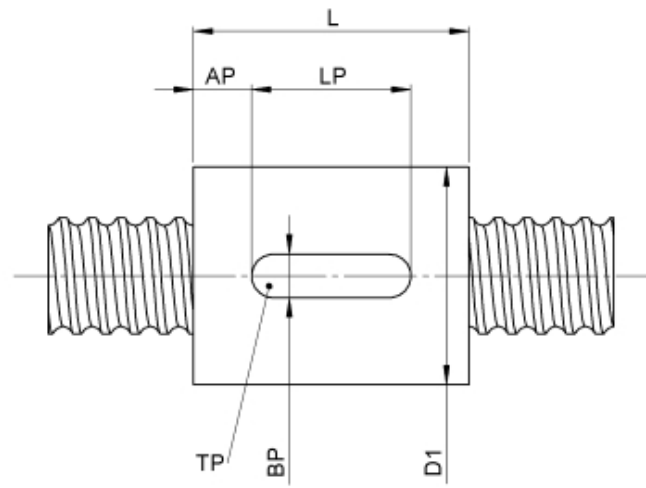
1214/5.12.260.330

DESCRIPTION

- Nut Series 1214 with [internal ball return](#)
- Cylindrical nut with 4-point-contact, without wipers
- Nut shape design for assembling in a housing
- Single start ball thread, ground execution according to accuracy class P1 - P5
- Miniature ball screws also available with axial play



TECHNICAL DATA AND DIMENSIONS



Series			1214	Friction torque TO		[Ncm]	3,0
Nominal diameter	[mm]	dN	12	Accuracy			P
Lead	[mm]	P	5	Preload/backlash free/with backlash			backlash free
Shaft style			B	Nut length		[mm]	L 26
Nominal stroke	[mm]		200	Dynamic load capacity		[kN]	Ca 3,60
Overall length	[mm]	G1	330	Static load capacity		[kN]	C0a 4,30
Thread length	[mm]	G2	260	Position keyway		[mm]	AP 5
Ball circles		i	1x3	Width keyway		[mm]	BP 5
Ball diameter	[mm]	dW	2	Length keyway		[mm]	LP 16
DN-value			120000	Depth keyway		[mm]	TP 1,9
No. of starts			1	Pilot diameter		[mm]	D1 19
Friction torque FROM	[Ncm]		3,0	Pilot diameter tolerance		[mm]	h6

August Steinmeyer GmbH & Co. KG | Riedstraße 7 | 72458 Albstadt | Phone +49 (0) 7431 1288-0 | Fax +49 (0) 7431 1288-89 | info@steinmeyer.com

Drive Technology, Ball Screws, Precision Ball Screws, Miniature Ball Screws, Ultra Thrust Ball Screws, Rotating Nuts, Cooled Ball Screws, Precision Lead Screws, Differential Rolled Screws, Rolled Ball Screws