

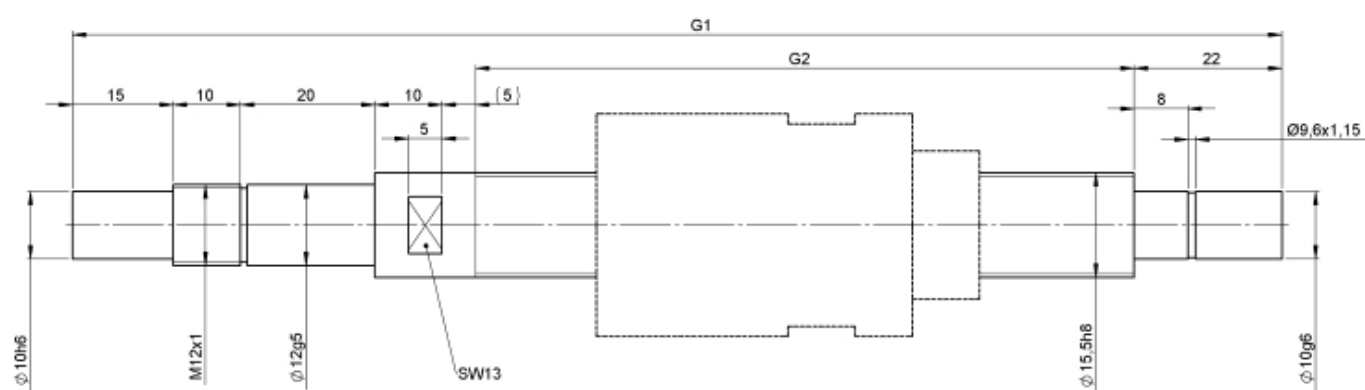
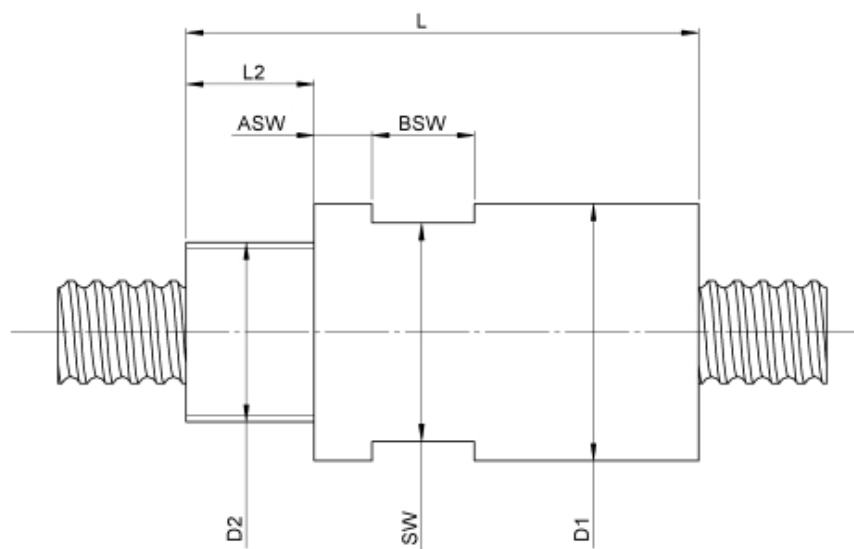
1510/5.16.289.371

DESCRIPTION

- Nut Series 1510 with [internal ball return](#)
- Spring preloaded double nut in housing with connecting thread and 2-point-contact, without wipers
- Nut shape design to be screwed in
- Single start ball thread, ground execution according to accuracy class P1 - P5



TECHNICAL DATA AND DIMENSIONS



Series			1510	No. of starts			1
Nominal diameter	[mm]	dN	16	Friction torque FROM	[Ncm]		1,5
Lead	[mm]	P	5	Friction torque TO	[Ncm]		3,0
Shaft style			B	Accuracy			P
Nominal stroke	[mm]		200	Preload/backlash free/with backlash			Preload
Overall length	[mm]	G1	371	Nut length	[mm]	L	57
Thread length	[mm]	G2	289	Dynamic load capacity	[kN]	Ca	3,90
Ball circles		i	2x2	Static load capacity	[kN]	C0a	4,70
Ball diameter	[mm]	dW	2,5	Pilot diameter	[mm]	D1	33
DN-value			120000				

August Steinmeyer GmbH & Co. KG | Riedstraße 7 | 72458 Albstadt | Phone +49 (0) 7431 1288-0 | Fax +49 (0) 7431 1288-89 | info@steinmeyer.com

Drive Technology, Ball Screws, Precision Ball Screws, Miniature Ball Screws, Ultra Thrust Ball Screws, Rotating Nuts, Cooled Ball Screws, Precision Lead Screws, Differential Rolled Screws, Rolled Ball Screws