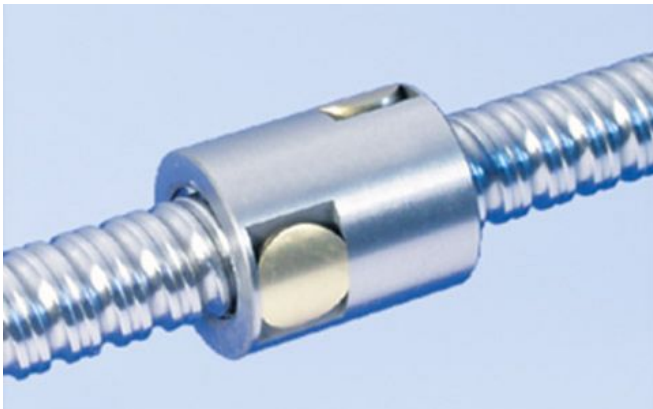


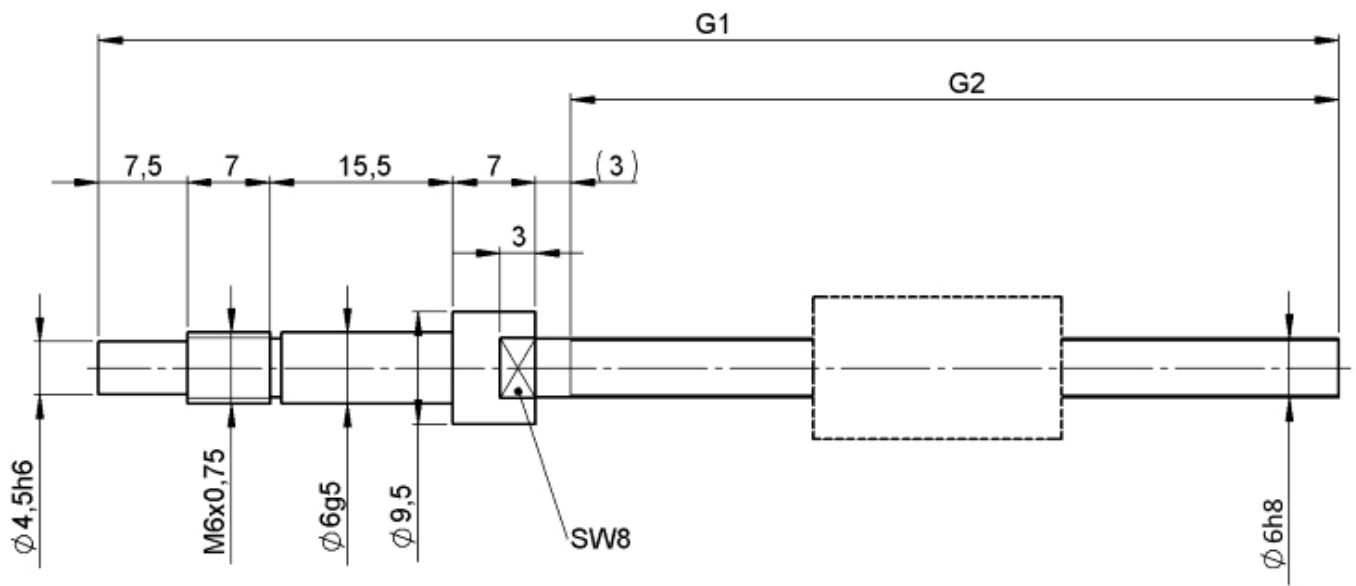
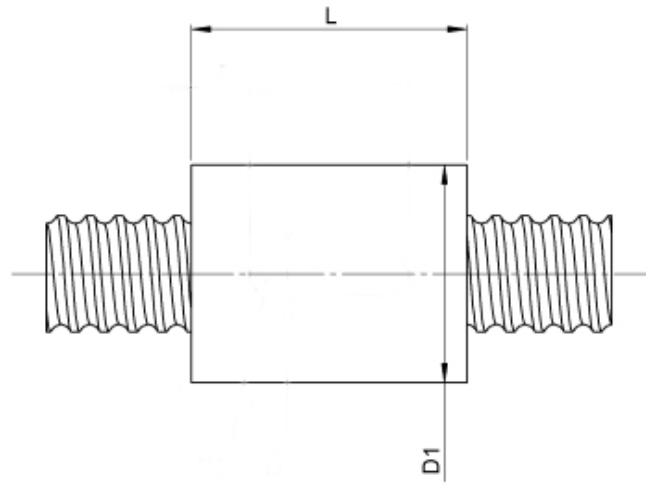
1214/1.6.125.165

DESCRIPTION

- Nut Series 1214 with [internal ball return](#)
- Cylindrical nut with 4-point-contact, without wipers
- Nut shape design for assembling in a housing
- Single start ball thread, ground execution according to accuracy class P1 - P5
- Miniature ball screws also available with axial play



TECHNICAL DATA AND DIMENSIONS



Series			1214	No. of starts			1
Nominal diameter	[mm]	dN	6	Friction torque FROM	[Ncm]		1,5
Lead	[mm]	P	1	Friction torque TO	[Ncm]		1,5
Shaft style			B	Accuracy			P
Nominal stroke	[mm]		100	Preload/backlash free/with backlash			backlash free
Overall length	[mm]	G1	165	Nut length	[mm]	L	12
Thread length	[mm]	G2	125	Dynamic load capacity	[kN]	Ca	0,55
Ball circles		i	1x3	Static load capacity	[kN]	C0a	0,92
Ball diameter	[mm]	dW	0,8	Pilot diameter	[mm]	D1	12
DN-value			120000	Pilot diameter tolerance	[mm]		h6

August Steinmeyer GmbH & Co. KG | Riedstraße 7 | 72458 Albstadt | Phone +49 (0) 7431 1288-0 | Fax +49 (0) 7431 1288-89 | info@steinmeyer.com

Drive Technology, Ball Screws, Precision Ball Screws, Miniature Ball Screws, Ultra Thrust Ball Screws, Rotating Nuts, Cooled Ball Screws, Precision Lead Screws, Differential Rolled Screws, Rolled Ball Screws