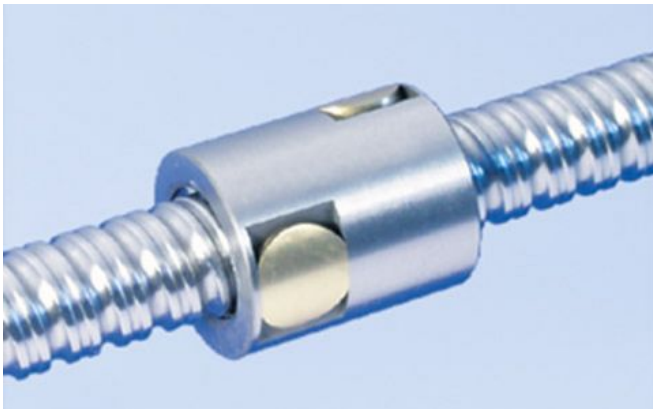


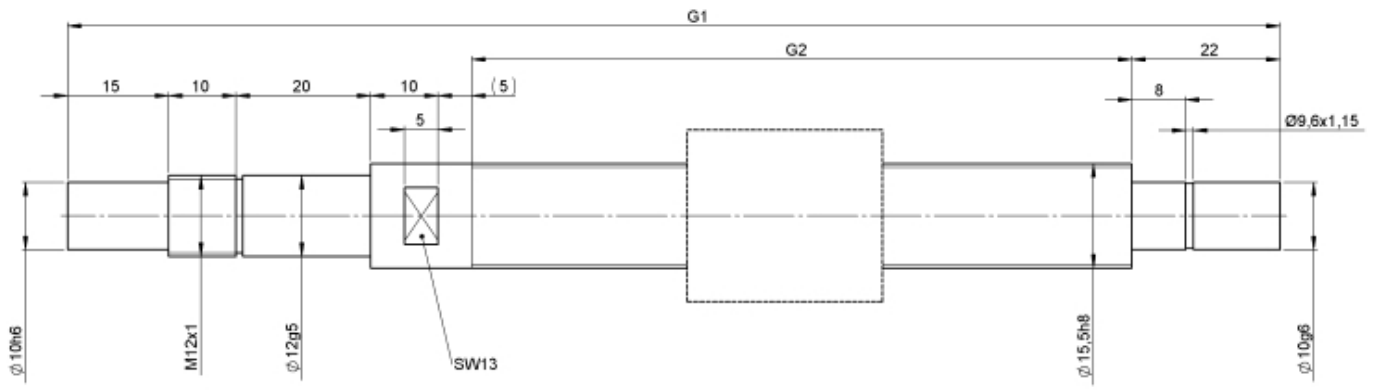
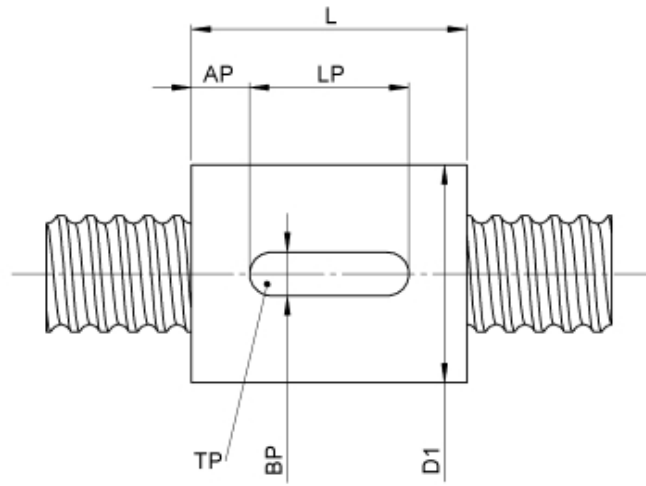
1214/2.16.389.471

DESCRIPTION

- Nut Series 1214 with [internal ball return](#)
- Cylindrical nut with 4-point-contact, without wipers
- Nut shape design for assembling in a housing
- Single start ball thread, ground execution according to accuracy class P1 - P5
- Miniature ball screws also available with axial play



TECHNICAL DATA AND DIMENSIONS



Series			1214	Friction torque TO	[Ncm]		4,0
Nominal diameter	[mm]	dN	16	Accuracy			P
Lead	[mm]	P	2	Preload/backlash free/with backlash			backlash free
Shaft style			B	Nut length	[mm]	L	19
Nominal stroke	[mm]		300	Dynamic load capacity	[kN]	Ca	2,90
Overall length	[mm]	G1	471	Static load capacity	[kN]	C0a	4,90
Thread length	[mm]	G2	389	Position keyway	[mm]	AP	1,5
Ball circles		i	1x3	Width keyway	[mm]	BP	5
Ball diameter	[mm]	dW	1,5	Length keyway	[mm]	LP	16
DN-value			120000	Depth keyway	[mm]	TP	1,9
No. of starts			1	Pilot diameter	[mm]	D1	28
Friction torque FROM	[Ncm]		4,0	Pilot diameter tolerance	[mm]		h6

August Steinmeyer GmbH & Co. KG | Riedstraße 7 | 72458 Albstadt | Phone +49 (0) 7431 1288-0 | Fax +49 (0) 7431 1288-89 | info@steinmeyer.com

Drive Technology, Ball Screws, Precision Ball Screws, Miniature Ball Screws, Ultra Thrust Ball Screws, Rotating Nuts, Cooled Ball Screws, Precision Lead Screws, Differential Rolled Screws, Rolled Ball Screws