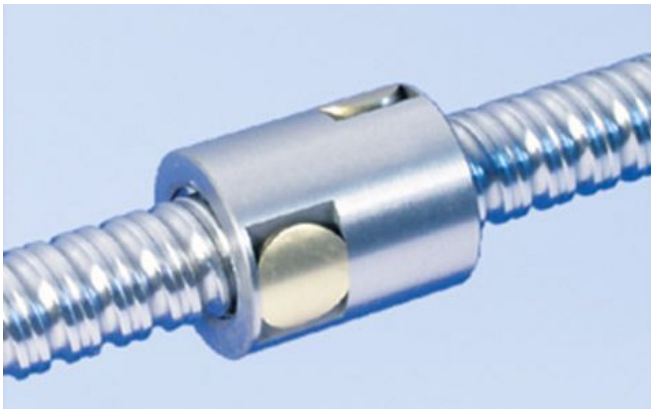


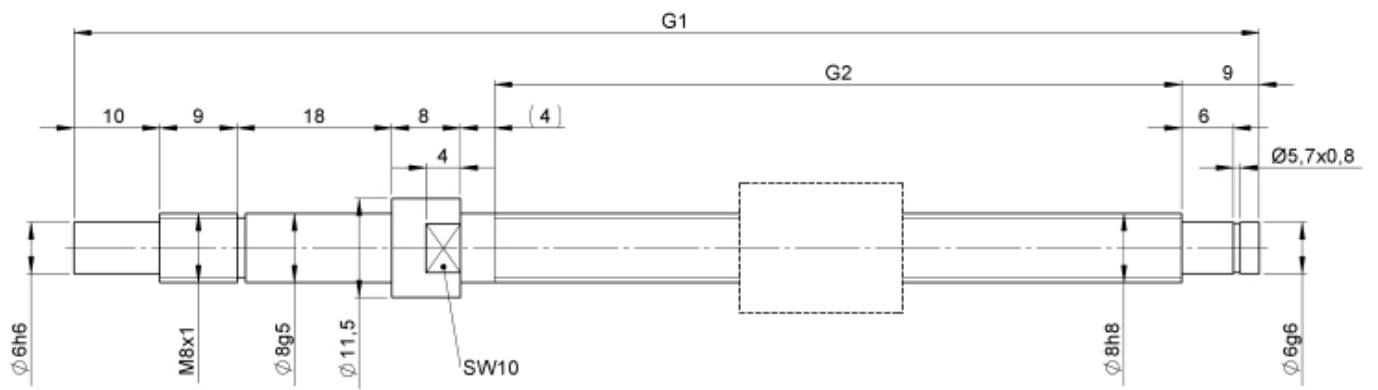
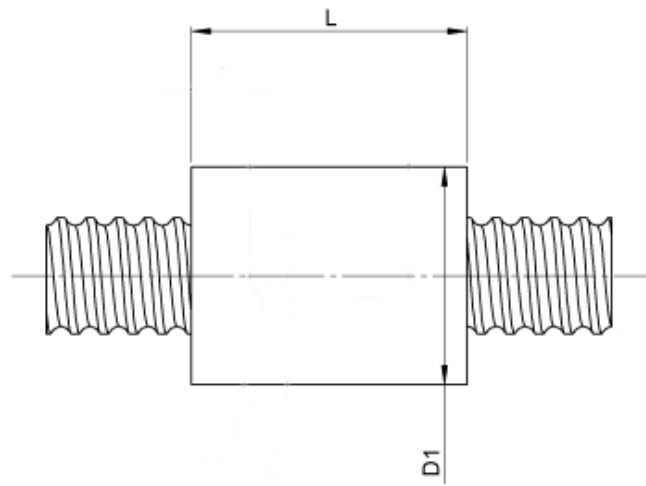
1214/0,5.8.190.248

DESCRIPTION

- Nut Series 1214 with [internal ball return](#)
- Cylindrical nut with 4-point-contact, without wipers
- Nut shape design for assembling in a housing
- Single start ball thread, ground execution according to accuracy class P1 - P5
- Miniature ball screws also available with axial play



TECHNICAL DATA AND DIMENSIONS



Series			1214	No. of starts			1
Nominal diameter	[mm]	dN	8	Friction torque FROM	[Ncm]	2,0	
Lead	[mm]	P	0,5	Friction torque TO	[Ncm]	2,0	
Shaft style			B	Accuracy			P
Nominal stroke			[mm]	150	Preload/backlash free/with backlash		backlash free
Overall length	[mm]	G1	248	Nut length	[mm]	L	13
Thread length	[mm]	G2	190	Dynamic load capacity		[kN]	Ca 0,40
Ball circles		i	1x3	Static load capacity		[kN]	C0a 0,50
Ball diameter	[mm]	dW	0,6	Pilot diameter	[mm]	D1	15
DN-value			120000	Pilot diameter tolerance		[mm]	h6

August Steinmeyer GmbH & Co. KG | info@steinmeyer.com

Drive Technology, Ball Screws, Precision Ball Screws, Miniature Ball Screws, Ultra Thrust Ball Screws, Rotating Nuts, Cooled Ball Screws, Precision Lead Screws, Differential Rolled Screws, Rolled Ball Screws