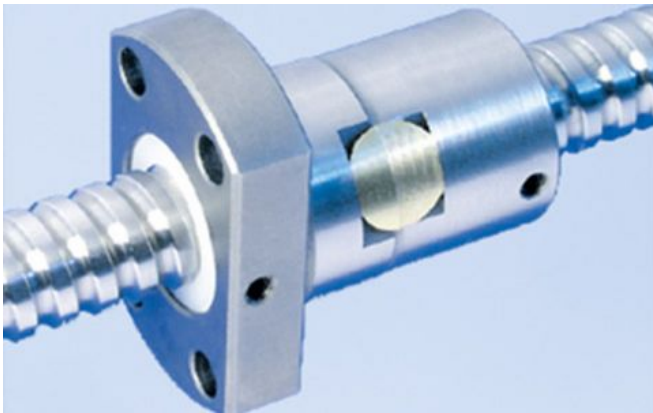


# 1412/2.12.110.180

---

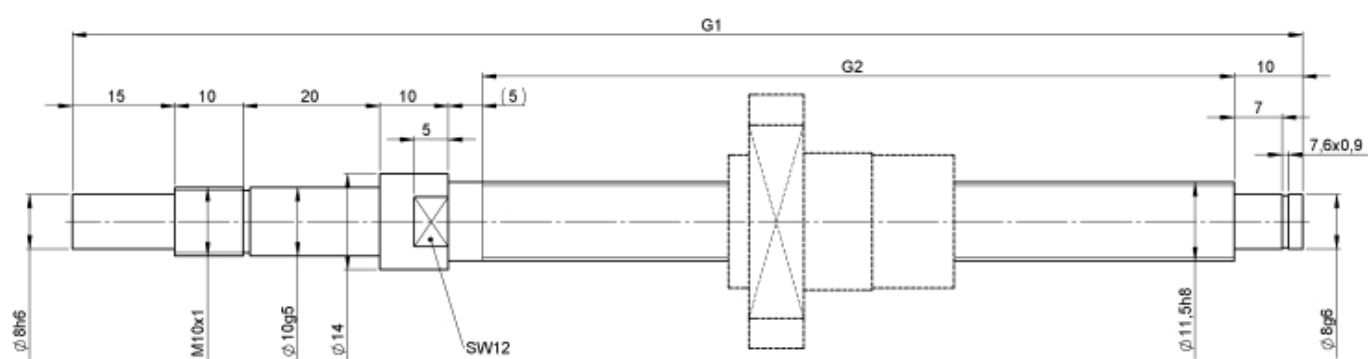
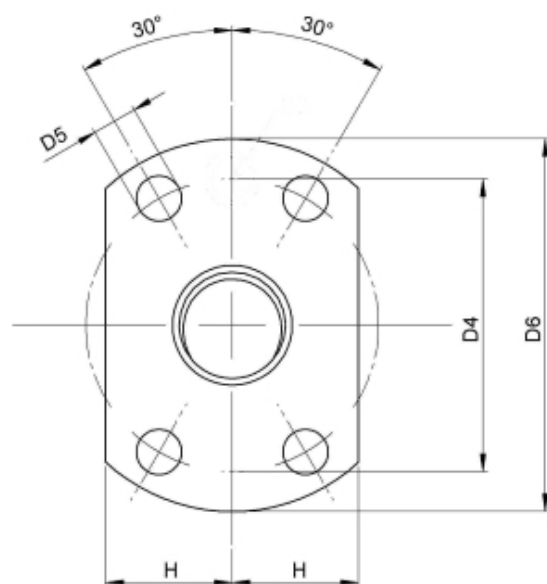
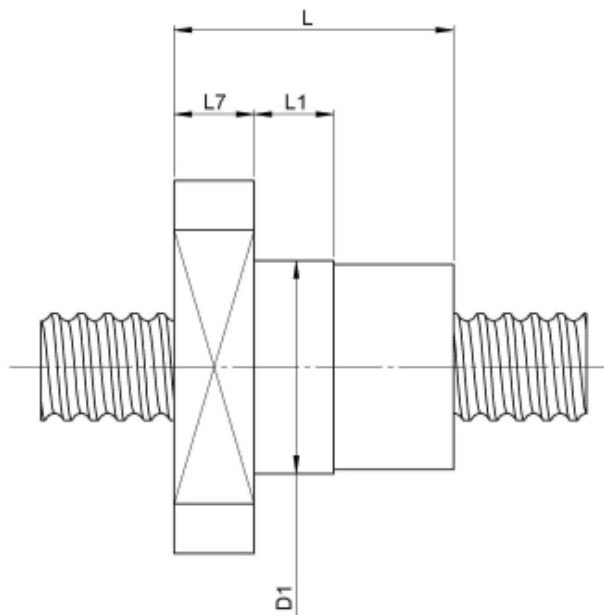
## DESCRIPTION

- Nut Series 1412 with [internal ball return](#), Flange single nut with 4-point-contact with standard synthetic wipers on both ends
- Nut shape design for assembly by flange
- Single start ball thread, ground execution according to accuracy class P1 - P5
- Miniature ball screws also available with axial play



---

## TECHNICAL DATA AND DIMENSIONS



Series			1412	Pilot Length		[mm]	L1	10
Nominal diameter	[mm]	dN	12	Accuracy				P
Lead	[mm]	P	2	Preload/backlash free/with backlash				backlash free
Shaft style			B	Nut length		[mm]	L	30
Nominal stroke	[mm]		50	Flange thickness		[mm]	L7	8
Overall length	[mm]	G1	180	Dynamic load capacity		[kN]	Ca	2,50
Thread length	[mm]	G2	110	Static load capacity		[kN]	C0a	3,40
Ball circles		i	1x3	Pilot diameter		[mm]	D1	20
Ball diameter	[mm]	dW	1,5	Pilot diameter tolerance		[mm]		g6
DN-value			120000	Bolt circle diameter		[mm]	D4	29
No. of starts			1	Flange hole diameter			D5	4,5
Friction torque FROM	[Ncm]		3,0	Flange diameter		[mm]	D6	37
Friction torque TO	[Ncm]		3,0	Flange flat dimension		[mm]	H	12

August Steinmeyer GmbH & Co. KG | [info@steinmeyer.com](mailto:info@steinmeyer.com)

Drive Technology, Ball Screws, Precision Ball Screws, Miniature Ball Screws, Ultra Thrust Ball Screws, Rotating Nuts, Cooled Ball Screws, Precision Lead Screws, Differential Rolled Screws, Rolled Ball Screws