

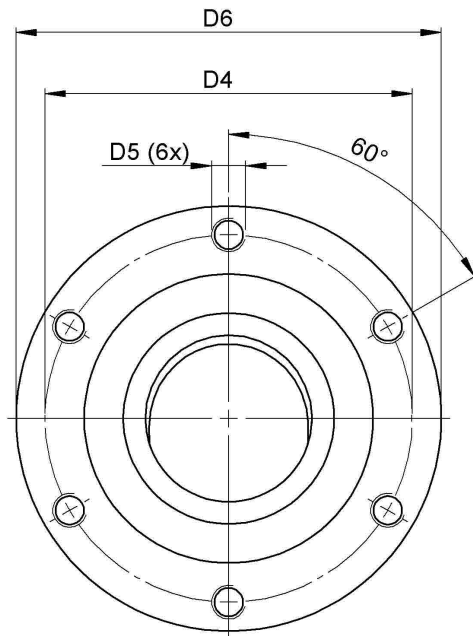
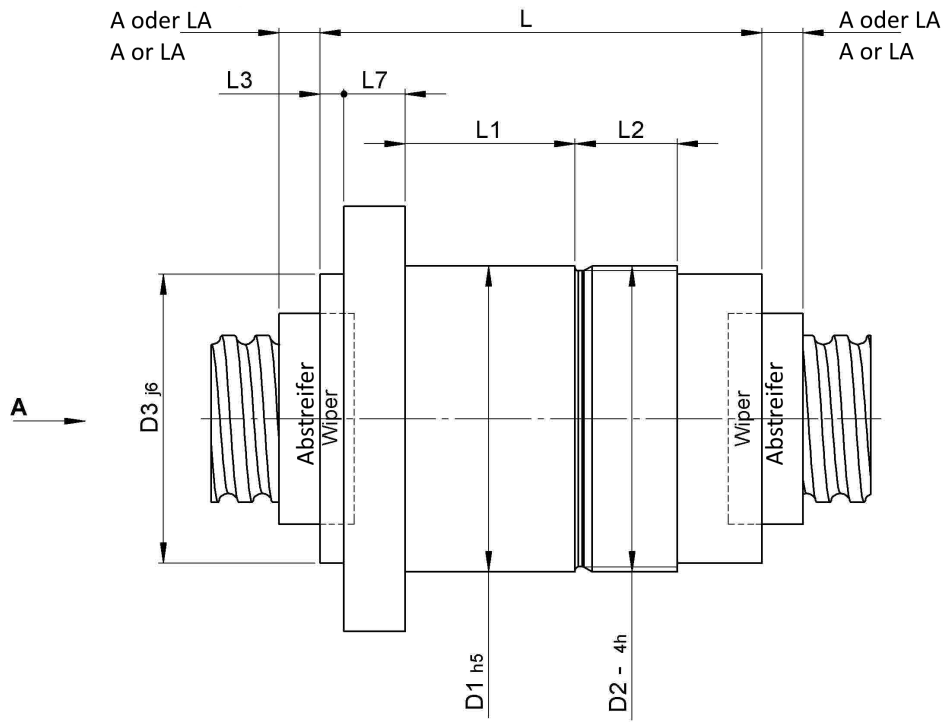
3424/40.50.7,5.6

DESCRIPTION

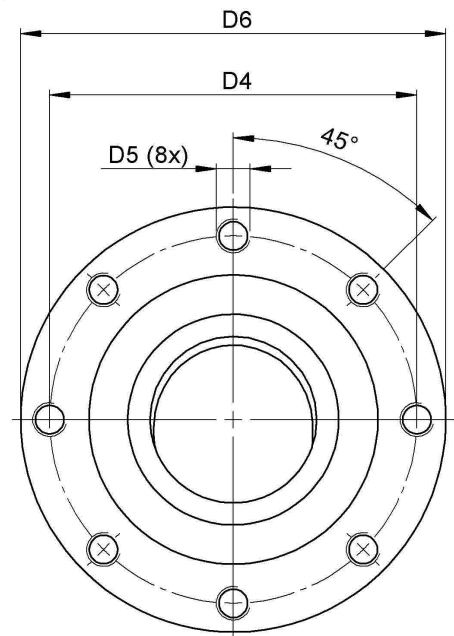
- Nut Series 3424 with [external ball return](#), Flange single nut with 4-point-contact with standard wipers on both ends
- Nut shape design for direct assembly of angular bearing, locknut and pulley
- Multiple start ball thread, ground execution according to accuracy class P1 - P5



TECHNICAL DATA AND DIMENSIONS



Nenndurchmesser
25 - 32mm
Nominal diameter
25 - 32mm



Nenndurchmesser
40 - 63mm
Nominal diameter
40 - 63mm

Ansicht "A"
View "A"

Series		3424		Nut length	[mm]	L	149
Nominal diameter	[mm]	dN	50	Flange thickness	[mm]	L7	18
Lead	[mm]	P	40	Dynamic load capacity	[kN]	Ca	94,60
Ball circles		i	3+3	Static load capacity	[kN]	C0a	193,60
Ball diameter	[mm]	dW	7,5	Pilot diameter	[mm]	D1	90
DN-value			160000	Pilot diameter tolerance	[mm]		h5
No. of starts			2	Bolt circle diameter	[mm]	D4	108
Friction torque FROM	[Ncm]		105,9	Flange hole diameter		D5	M10
Friction torque TO	[Ncm]		196,8	Flange diameter	[mm]	D6	125
Pilot Length	[mm]	L1	55				

August Steinmeyer GmbH & Co. KG | Riedstraße 7 | 72458 Albstadt | Phone +49 (0) 7431 1288-0 | Fax +49 (0) 7431 1288-89 | info@steinmeyer.com

Drive Technology, Ball Screws, Precision Ball Screws, Miniature Ball Screws, Ultra Thrust Ball Screws, Rotating Nuts, Cooled Ball Screws, Precision Lead Screws, Differential Rolled Screws, Rolled Ball Screws