

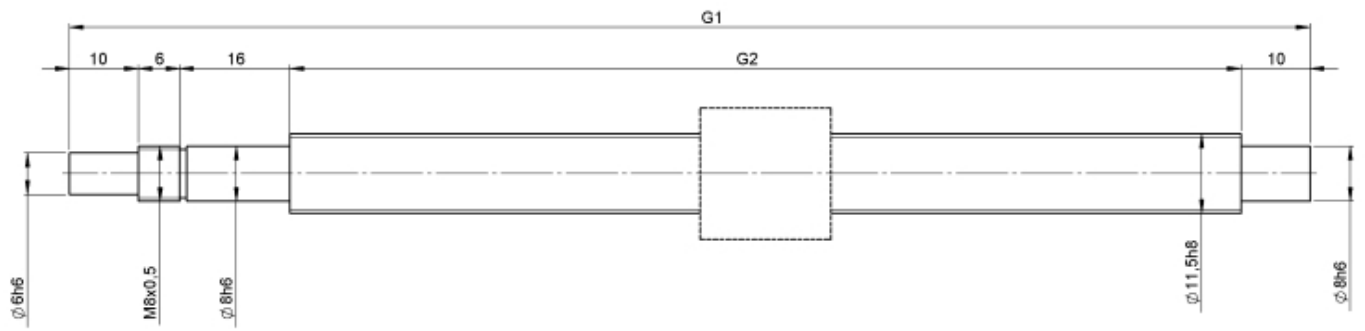
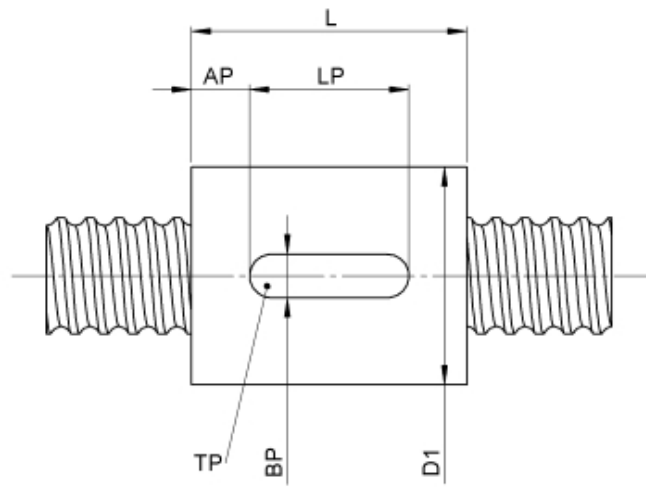
1214/5.12.355.397

DESCRIPTION

- Nut Series 1214 with [internal ball return](#)
- Cylindrical nut with 4-point-contact, without wipers
- Nut shape design for assembling in a housing
- Single start ball thread, ground execution according to accuracy class P1 - P5
- Miniature ball screws also available with axial play



TECHNICAL DATA AND DIMENSIONS



Series			1214	No. of starts			1
Nominal diameter	[mm]	dN	12	Friction torque FROM	[Ncm]	3,0	
Lead	[mm]	P	5	Friction torque TO	[Ncm]	3,0	
Shaft style			A	Accuracy			P
Nominal stroke	[mm]	300		Preload/backlash free/with backlash			backlash free
Overall length	[mm]	G1	397	Nut length	[mm]	L	26
Thread length	[mm]	G2	355	Dynamic load capacity	[kN]	Ca	3,60
Ball circles	i		1x3	Static load capacity	[kN]	C0a	4,30
Ball diameter	[mm]	dW	2	Pilot diameter	[mm]	D1	19
DN-value			120000	Pilot diameter tolerance	[mm]	h6	

August Steinmeyer GmbH & Co. KG | Riedstraße 7 | 72458 Albstadt | Phone +49 (0) 7431 1288-0 | Fax +49 (0) 7431 1288-89 | info@steinmeyer.com

Drive Technology, Ball Screws, Precision Ball Screws, Miniature Ball Screws, Ultra Thrust Ball Screws, Rotating Nuts, Cooled Ball Screws, Precision Lead Screws, Differential Rolled Screws, Rolled Ball Screws