

# 1510/0,5.5.95.135

---

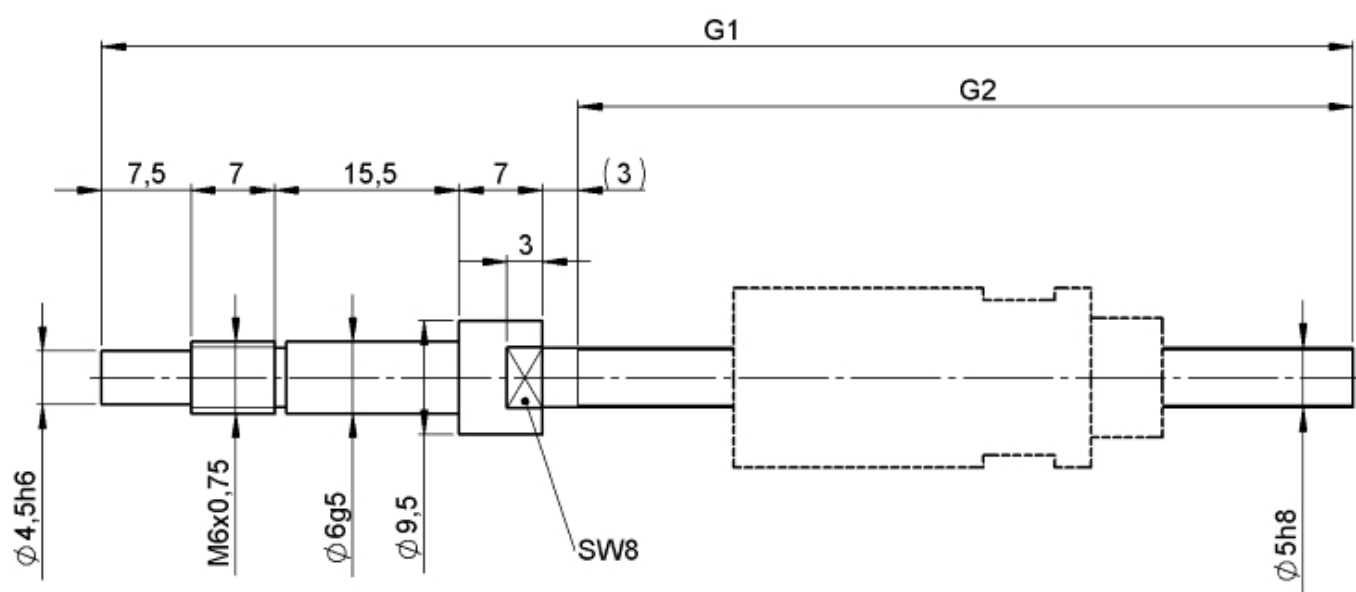
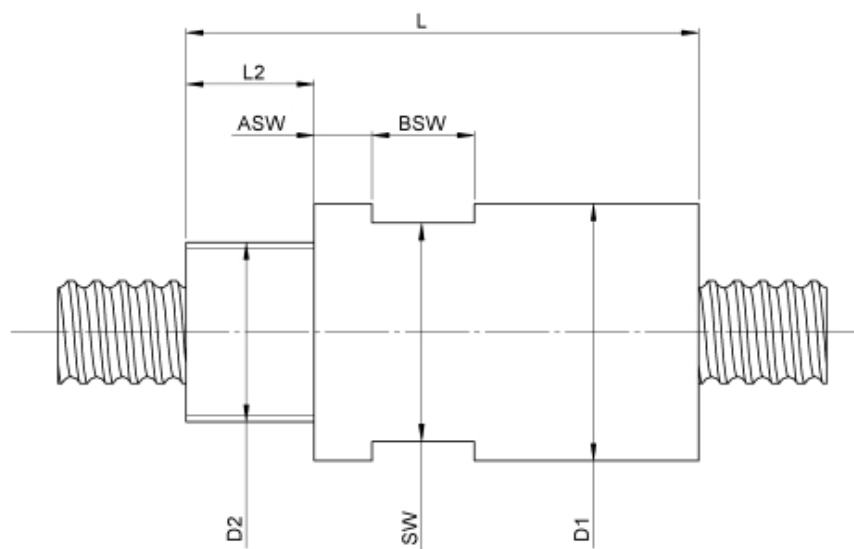
## DESCRIPTION

- Nut Series 1510 with [internal ball return](#)
- Spring preloaded double nut in housing with connecting thread and 2-point-contact, without wipers
- Nut shape design to be screwed in
- Single start ball thread, ground execution according to accuracy class P1 - P5



---

## TECHNICAL DATA AND DIMENSIONS



Series			1510	Friction torque TO		[Ncm]	1,0
Nominal diameter	[mm]	dN	5	Max. preload		[kN]	0,01
Lead	[mm]	P	0,5	Accuracy			P
Shaft style			B	Preload/backlash free/with backlash			Preload
Nominal stroke	[mm]		50	Nut length		[mm]	L 36
Overall length	[mm]	G1	135	Max. axial load		[kN]	Fmax 0,006
Thread length	[mm]	G2	95	Thread length		[mm]	L2 6
Ball circles		i	2x2	Dynamic load capacity		[kN]	Ca 0,10
Ball diameter	[mm]	dW	0,6	Static load capacity		[kN]	C0a 0,10
DN-value			120000	Pilot diameter		[mm]	D1 15
No. of starts			1	Thread diameter		[mm]	D2 M10x1
Friction torque FROM	[Ncm]		0,5				

August Steinmeyer GmbH & Co. KG | [info@steinmeyer.com](mailto:info@steinmeyer.com)

Drive Technology, Ball Screws, Precision Ball Screws, Miniature Ball Screws, Ultra Thrust Ball Screws, Rotating Nuts, Cooled Ball Screws, Precision Lead Screws, Differential Rolled Screws, Rolled Ball Screws