

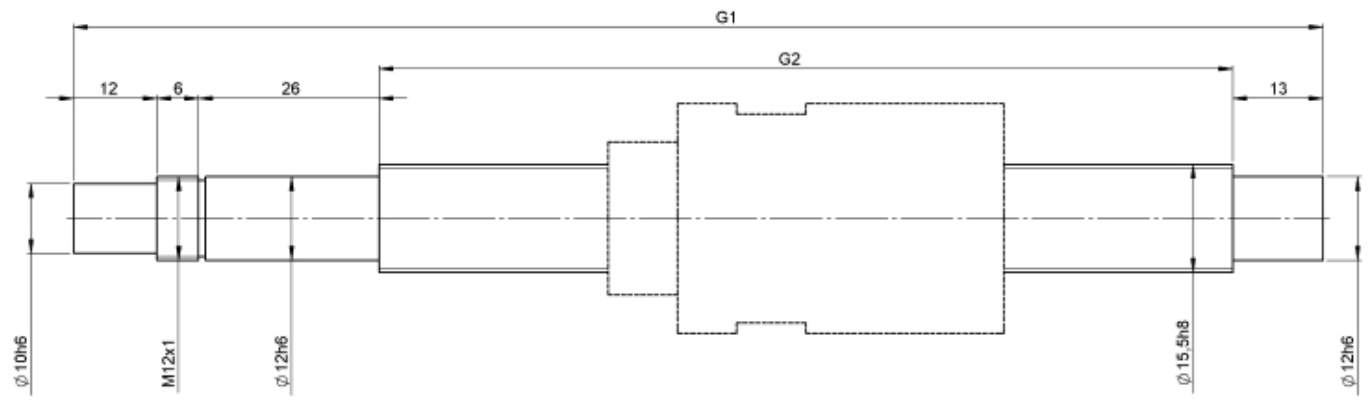
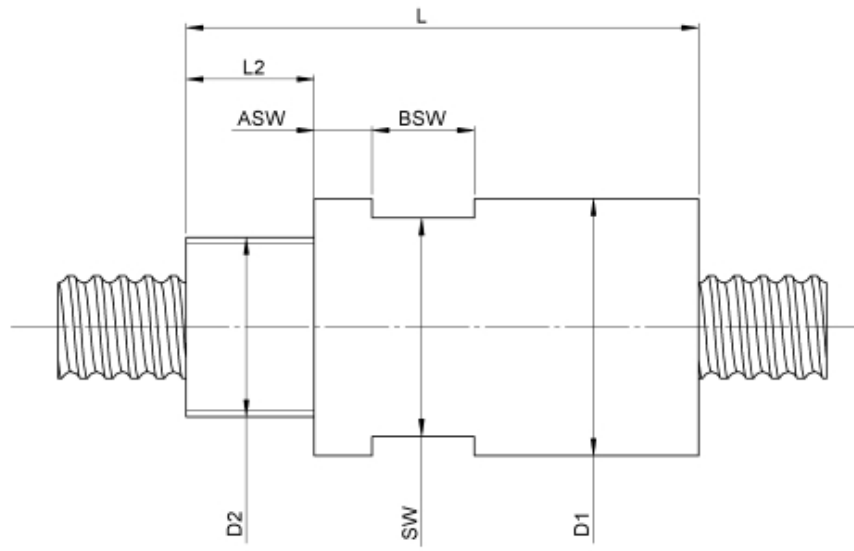
1510/2.16.470.527

DESCRIPTION

- Nut Series 1510 with [internal ball return](#)
- Spring preloaded double nut in housing with connecting thread and 2-point-contact, without wipers
- Nut shape design to be screwed in
- Single start ball thread, ground execution according to accuracy class P1 - P5



TECHNICAL DATA AND DIMENSIONS



| | | | | | | | |
|----------------------|-------|----|--------|-------------------------------------|------|---------|-------|
| Series | | | 1510 | Max. preload | [kN] | 0,12 | |
| Nominal diameter | [mm] | dN | 16 | Accuracy | | P | |
| Lead | [mm] | P | 2 | Preload/backlash free/with backlash | | Preload | |
| Shaft style | | | A | Nut length | [mm] | L | 57 |
| Nominal stroke | [mm] | | 400 | Max. axial load | [kN] | Fmax | 0,1 |
| Overall length | [mm] | G1 | 527 | Thread length | [mm] | L2 | 10 |
| Thread length | [mm] | G2 | 470 | Dynamic load capacity | [kN] | Ca | 2,10 |
| Ball circles | | i | 2x2 | Static load capacity | [kN] | C0a | 3,20 |
| Ball diameter | [mm] | dW | 1,5 | Pilot diameter | [mm] | D1 | 33 |
| DN-value | | | 120000 | Thread diameter | [mm] | D2 | M22x1 |
| No. of starts | | | 1 | Wrench flat | [mm] | SW | 30 |
| Friction torque FROM | [Ncm] | | 1,5 | Width wrench flat | [mm] | BSW | 10 |
| Friction torque TO | [Ncm] | | 3,0 | Position wrench flat | [mm] | ASW | 8,5 |

August Steinmeyer GmbH & Co. KG | Riedstraße 7 | 72458 Albstadt | Phone +49 (0) 7431 1288-0 | Fax +49 (0) 7431 1288-89 | info@steinmeyer.com

Drive Technology, Ball Screws, Precision Ball Screws, Miniature Ball Screws, Ultra Thrust Ball Screws, Rotating Nuts, Cooled Ball Screws, Precision Lead Screws, Differential Rolled Screws, Rolled Ball Screws