

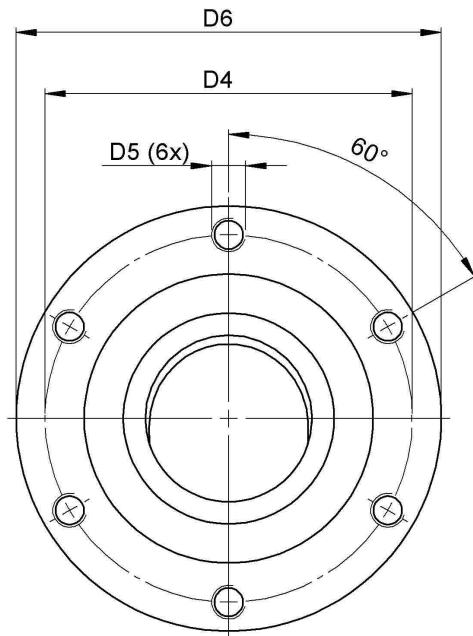
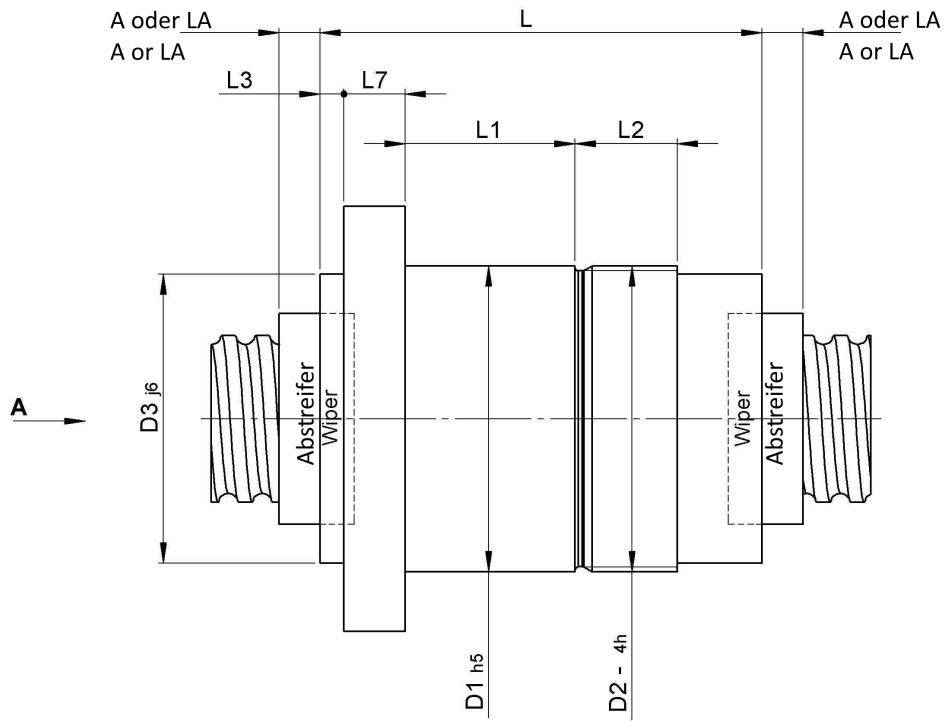
3424/25.60.9.8

DESCRIPTION

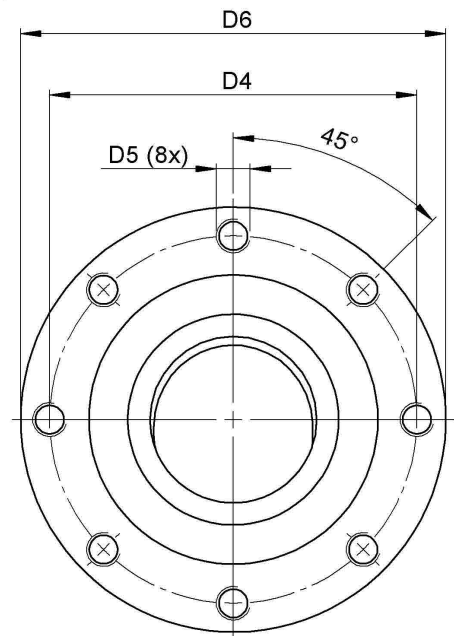
- Nut Series 3424 with [external ball return](#), Flange single nut with 4-point-contact with standard wipers on both ends
- Nut shape design for direct assembly of angular bearing, locknut and pulley
- Multiple start ball thread, ground execution according to accuracy class P1 - P5



TECHNICAL DATA AND DIMENSIONS



Nenndurchmesser
25 - 32mm
Nominal diameter
25 - 32mm



Nenndurchmesser
40 - 63mm
Nominal diameter
40 - 63mm

Ansicht "A"
View "A"

Series			3424	Friction torque TO		[Ncm]	514,3
Nominal diameter	[mm]	dN	60	Max. preload		[kN]	17,160
Lead	[mm]	P	25	Nut length		[mm]	L 131
Ball circles		i	4+4	Thread length		[mm]	L2 25
Ball diameter	[mm]	dW	9	Dynamic load capacity		[kN]	Ca 214,50
DN-value			160000	Static load capacity		[kN]	C0a 492,90
No. of starts			2	Pilot diameter		[mm]	D1 100
Friction torque FROM	[Ncm]		308,6	Thread diameter		[mm]	D2 M100x2

August Steinmeyer GmbH & Co. KG | info@steinmeyer.com

Drive Technology, Ball Screws, Precision Ball Screws, Miniature Ball Screws, Ultra Thrust Ball Screws, Rotating Nuts, Cooled Ball Screws, Precision Lead Screws, Differential Rolled Screws, Rolled Ball Screws