

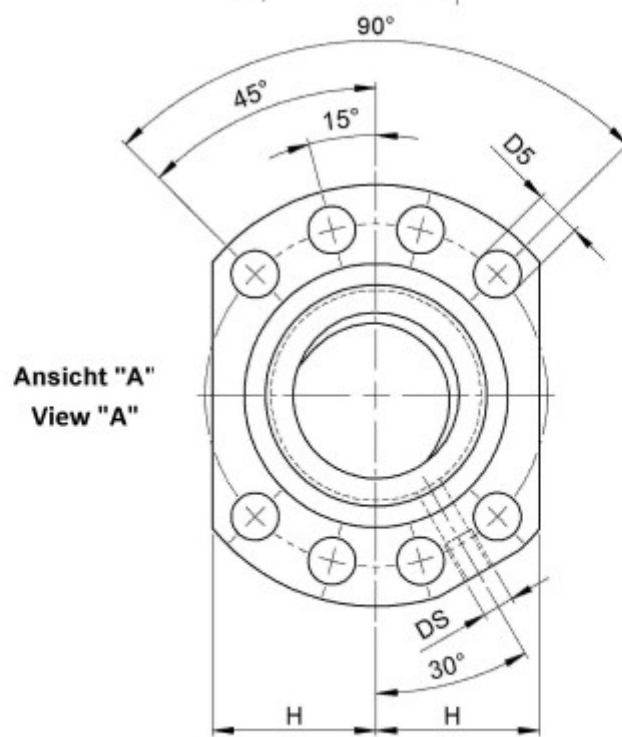
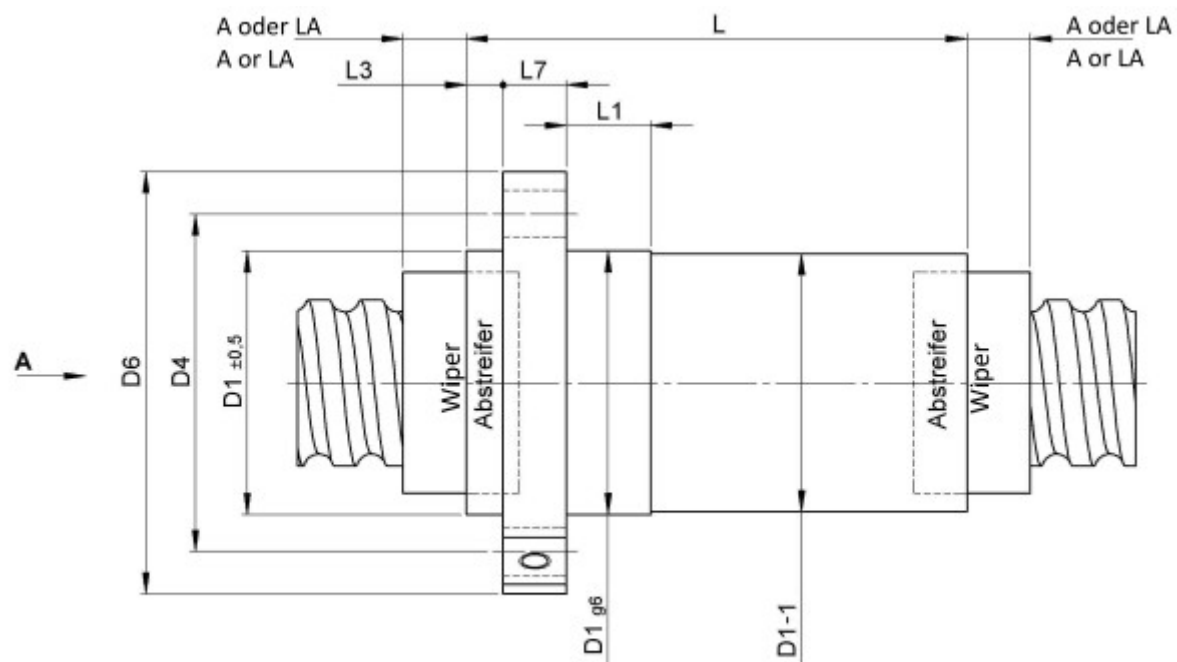
3426/30.40.7,5.8N

DESCRIPTION

- Nut Series 3426 with [external ball return](#), Flange single nut with 4-point-contact, with standard synthetic wipers on both ends
- Nut shape according to DIN for assembly by flange
- Multiple start ball thread, ground execution according to accuracy class P1 - P5



TECHNICAL DATA AND DIMENSIONS



Form B
Shape B

Series			3426	Friction torque TO		[Ncm]	186,0
Nominal diameter	[mm]	dN	40	Max. preload		[kN]	8,944
Lead	[mm]	P	30	Accuracy			P
Ball circles		i	4+4	Nut length		[mm]	L 149
Ball diameter	[mm]	dW	7,5	Dynamic load capacity		[kN]	Ca 111,80
DN-value			160000	Static load capacity		[kN]	C0a 211,30
No. of starts			2	Pilot diameter		[mm]	D1 70
Friction torque FROM		[Ncm]	100,2				

August Steinmeyer GmbH & Co. KG | Riedstraße 7 | 72458 Albstadt | Phone +49 (0) 7431 1288-0 | Fax +49 (0) 7431 1288-89 | info@steinmeyer.com

Drive Technology, Ball Screws, Precision Ball Screws, Miniature Ball Screws, Ultra Thrust Ball Screws, Rotating Nuts, Cooled Ball Screws, Precision Lead Screws, Differential Rolled Screws, Rolled Ball Screws