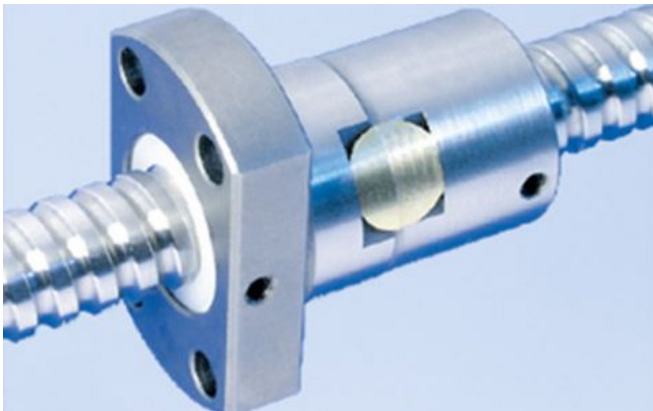


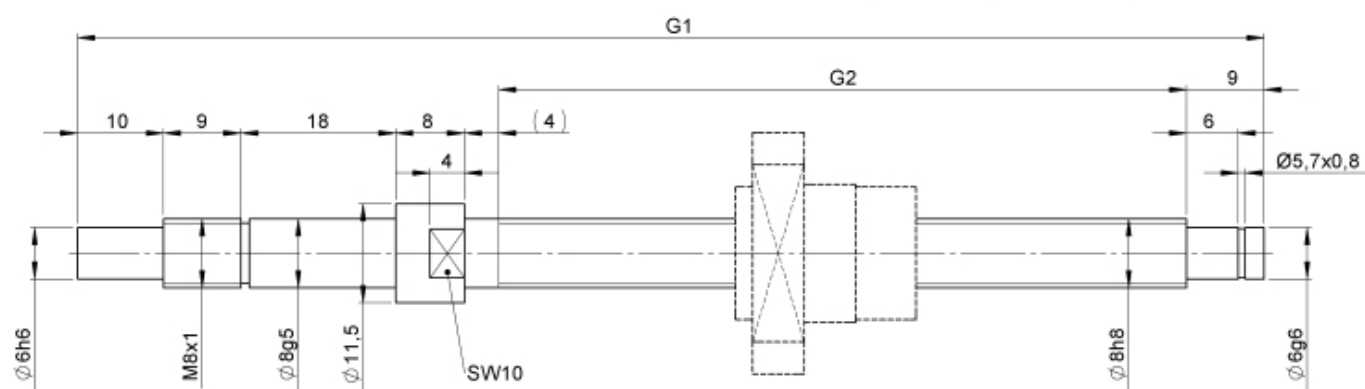
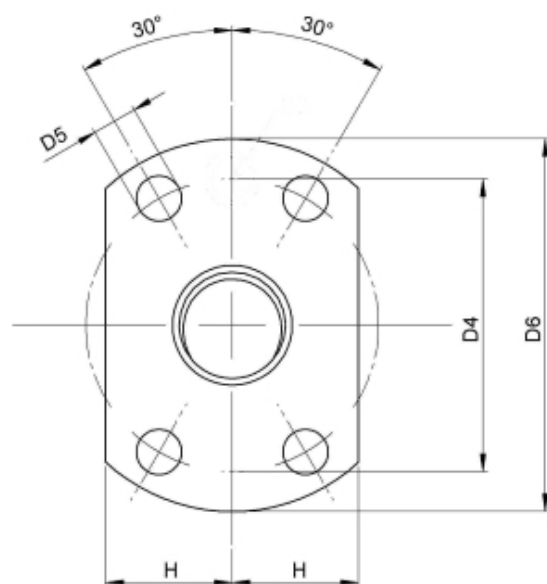
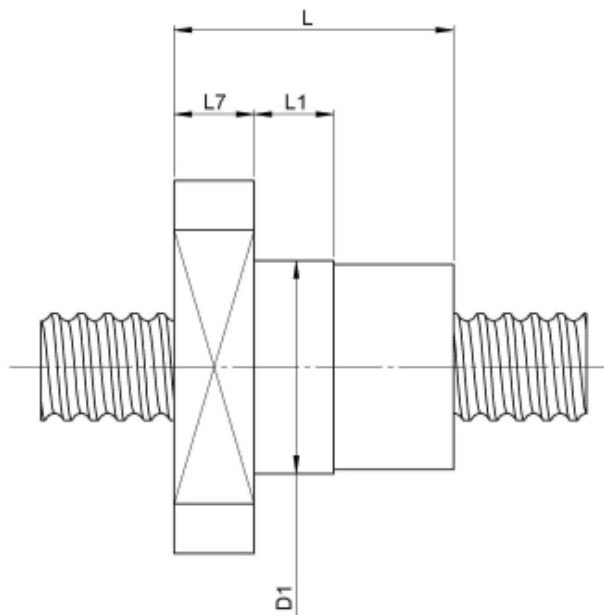
1412/1.8.140.198

DESCRIPTION

- Nut Series 1412 with [internal ball return](#), Flange single nut with 4-point-contact with standard synthetic wipers on both ends
- Nut shape design for assembly by flange
- Single start ball thread, ground execution according to accuracy class P1 - P5
- Miniature ball screws also available with axial play



TECHNICAL DATA AND DIMENSIONS



Series			1412	No. of starts			1
Nominal diameter	[mm]	dN	8	Friction torque FROM		[Ncm]	0,5
Lead	[mm]	P	1	Friction torque TO		[Ncm]	0,5
Shaft style			B	Accuracy			P
Nominal stroke	[mm]		100	Preload/backlash free/with backlash			with backlash
Overall length	[mm]	G1	198	Nut length		[mm]	L 23
Thread length	[mm]	G2	140	Dynamic load capacity		[kN]	Ca 0,90
Ball circles		i	1x3	Static load capacity		[kN]	C0a 1,20
Ball diameter	[mm]	dW	0,8	Pilot diameter		[mm]	D1 16
DN-value			120000				

August Steinmeyer GmbH & Co. KG | Riedstraße 7 | 72458 Albstadt | Phone +49 (0) 7431 1288-0 | Fax +49 (0) 7431 1288-89 | info@steinmeyer.com

Drive Technology, Ball Screws, Precision Ball Screws, Miniature Ball Screws, Ultra Thrust Ball Screws, Rotating Nuts, Cooled Ball Screws, Precision Lead Screws, Differential Rolled Screws, Rolled Ball Screws