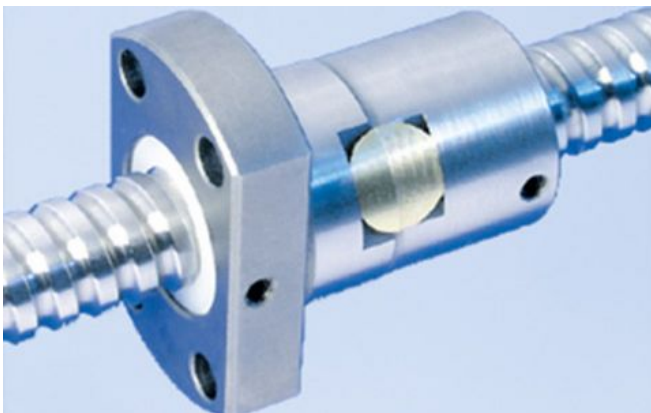


# 1412/1.8.80.138

---

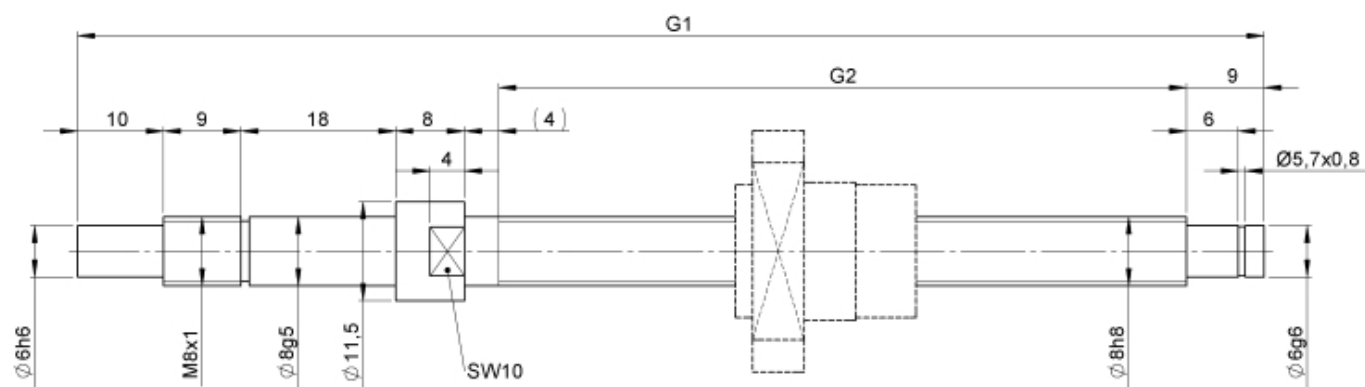
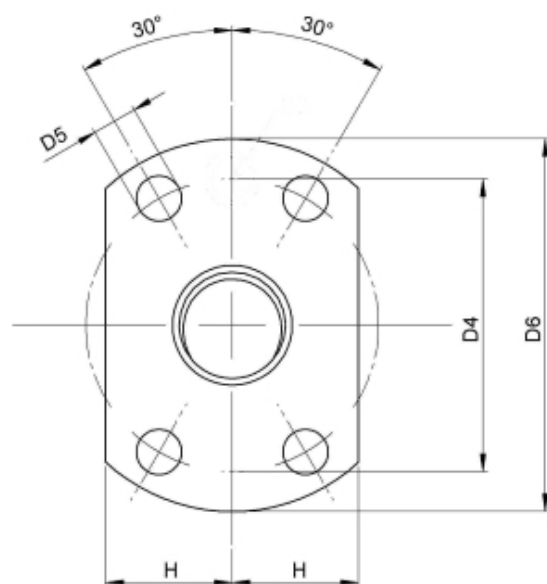
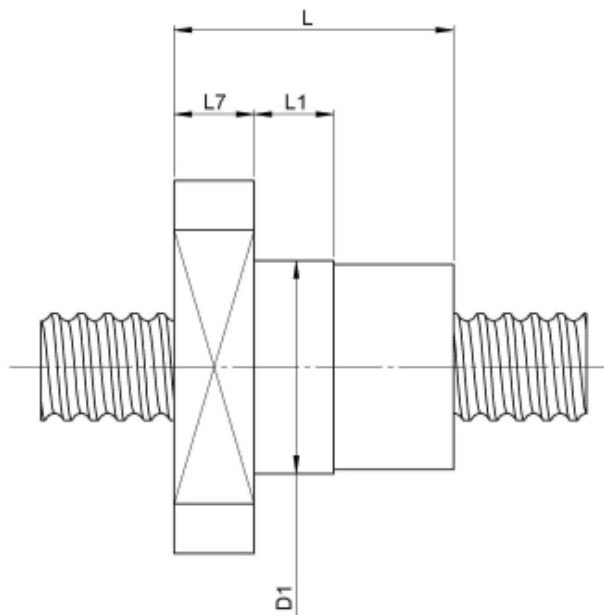
## DESCRIPTION

- Nut Series 1412 with [internal ball return](#), Flange single nut with 4-point-contact with standard synthetic wipers on both ends
- Nut shape design for assembly by flange
- Single start ball thread, ground execution according to accuracy class P1 - P5
- Miniature ball screws also available with axial play



---

## TECHNICAL DATA AND DIMENSIONS



Series			1412	Accuracy			P
Nominal diameter	[mm]	dN	8	Preload/backlash free/with backlash			backlash free
Lead	[mm]	P	1	Nut length	[mm]	L	23
Shaft style			B	Nominal stroke	[mm]	40	
Flange thickness	[mm]	L7	6	Overall length	[mm]	G1	138
Dynamic load capacity	[kN]	Ca	0,90	Thread length	[mm]	G2	80
Static load capacity	[kN]	C0a	1,20	Ball circles		i	1x3
Pilot diameter	[mm]	D1	16	Ball diameter	[mm]	dW	0,8
Pilot diameter tolerance	[mm]	g6		DN-value			120000
Bolt circle diameter	[mm]	D4	22	No. of starts			1
Flange diameter	[mm]	D6	28	Friction torque FROM	[Ncm]	2,0	
Flange flat dimension	[mm]	H	9,5	Friction torque TO	[Ncm]	2,0	

August Steinmeyer GmbH & Co. KG | [info@steinmeyer.com](mailto:info@steinmeyer.com)

Drive Technology, Ball Screws, Precision Ball Screws, Miniature Ball Screws, Ultra Thrust Ball Screws, Rotating Nuts, Cooled Ball Screws, Precision Lead Screws, Differential Rolled Screws, Rolled Ball Screws