

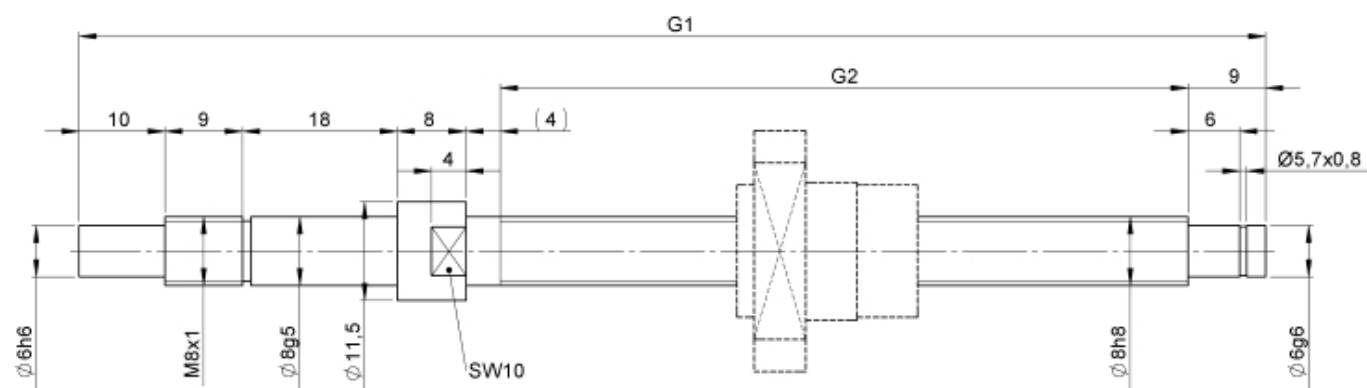
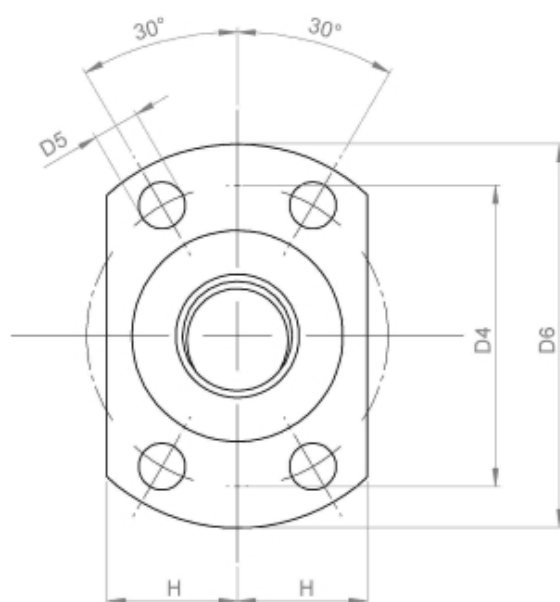
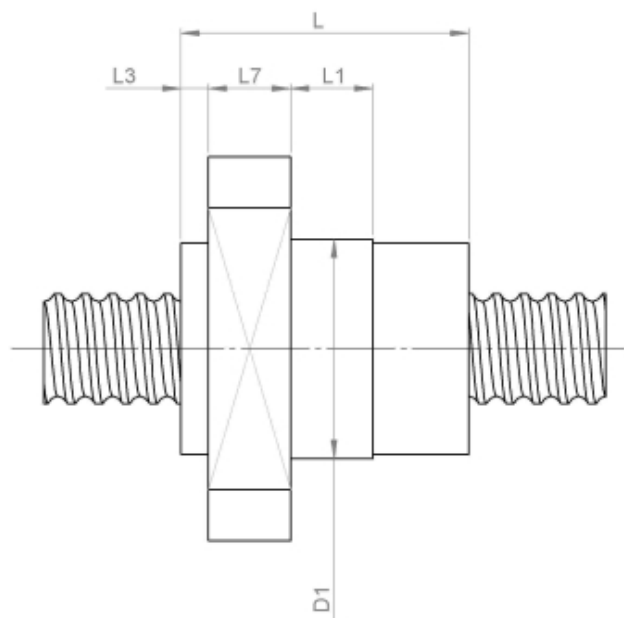
2412/5.8.110.168

DESCRIPTION

- Nut Series 2412 with [end cap ball return](#), Flange single nut with 4-point-contact, with standard synthetic wipers on both ends
- Nut shape design for assembly by flange
- Single start ball thread, ground execution according to accuracy class P1 - P5
- Miniature ball screws also available with axial play



TECHNICAL DATA AND DIMENSIONS



Series		2412		Wiper extension	[mm]	L3	6
Nominal diameter	[mm]	dN	8	Flange thickness	[mm]	L7	6
Lead	[mm]	P	5	Preferred standard series with shortened delivery times		S*	x
Ball circles		i	1x3	Dynamic load capacity	[kN]	Ca	1,90
Ball diameter	[mm]	dW	1,5	Static load capacity	[kN]	C0a	2,10
DN-value		160000		Pilot diameter	[mm]	D1	16
No. of starts		1		Pilot diameter tolerance	[mm]	g6	
Friction torque FROM	[Ncm]	2,0		Bolt circle diameter	[mm]	D4	22
Friction torque TO	[Ncm]	2,0		Flange hole diameter	D5		3,4
Accuracy		P		Flange diameter	[mm]	D6	28
Nut length	[mm]	L	22	Flange flat dimension	[mm]	H	9,5

August Steinmeyer GmbH & Co. KG | info@steinmeyer.com

Drive Technology, Ball Screws, Precision Ball Screws, Miniature Ball Screws, Ultra Thrust Ball Screws, Rotating Nuts, Cooled Ball Screws, Precision Lead Screws, Differential Rolled Screws, Rolled Ball Screws