

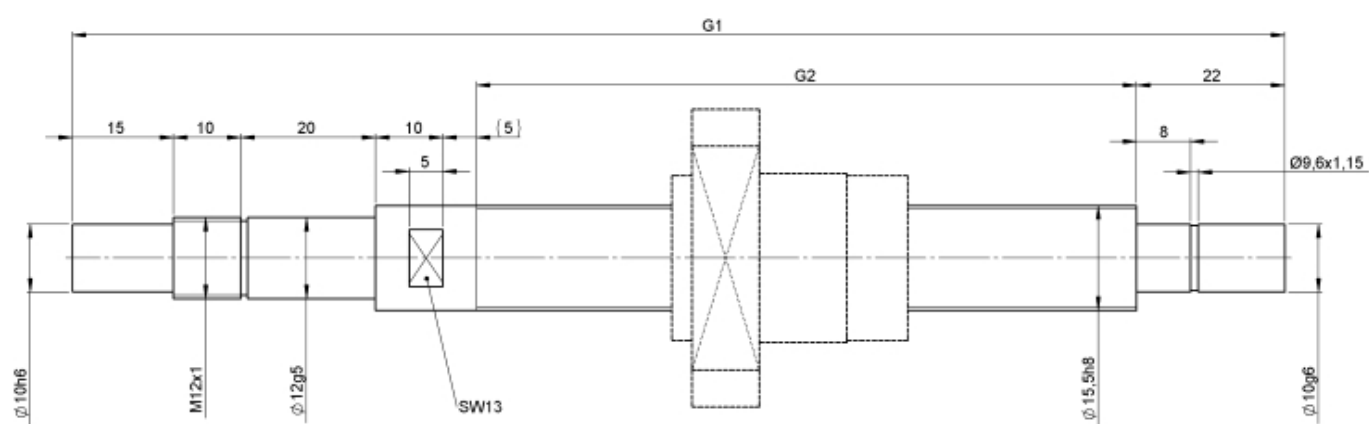
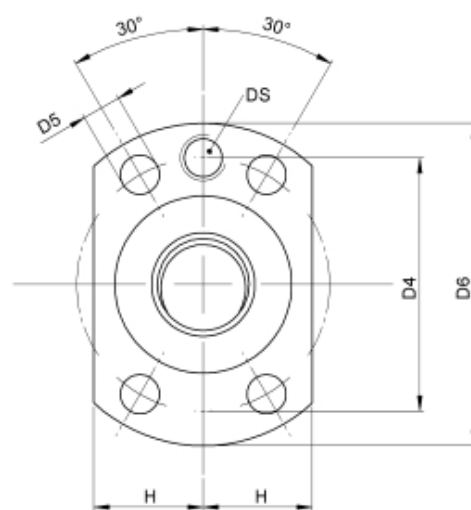
2422/20.16.139.221

DESCRIPTION

- Nut Series 2422 with [end cap ball return](#), Flange single nut with 4-point-contact, with standard synthetic wipers on both ends
- Nut shape design for assembly by flange
- Multiple start ball thread, ground execution according to accuracy class P1 - P5
- Miniature ball screws also available with axial play



TECHNICAL DATA AND DIMENSIONS



Series			2422	Flange thickness	[mm]	L7	10
Nominal diameter	[mm]	dN	16	Dynamic load capacity	[kN]	Ca	13,00
Lead	[mm]	P	20	Static load capacity	[kN]	C0a	17,90
Ball circles		i	2+2	Pilot Length	[mm]	L1	13
Ball diameter	[mm]	dW	3,5	Pilot diameter	[mm]	D1	32
DN-value			160000	Pilot diameter tolerance	[mm]		g6
No. of starts			2	Bolt circle diameter	[mm]	D4	42
Friction torque FROM	[Ncm]		4,0	Flange hole diameter		D5	5,5
Friction torque TO	[Ncm]		4,0	Lube hole	[mm]	DS	M6x1
Accuracy			P	Flange diameter	[mm]	D6	52
Nut length	[mm]	L	48	Flange flat dimension	[mm]	H	20
Wiper extension	[mm]	L3	10				

August Steinmeyer GmbH & Co. KG | info@steinmeyer.com

Drive Technology, Ball Screws, Precision Ball Screws, Miniature Ball Screws, Ultra Thrust Ball Screws, Rotating Nuts, Cooled Ball Screws, Precision Lead Screws, Differential Rolled Screws, Rolled Ball Screws