

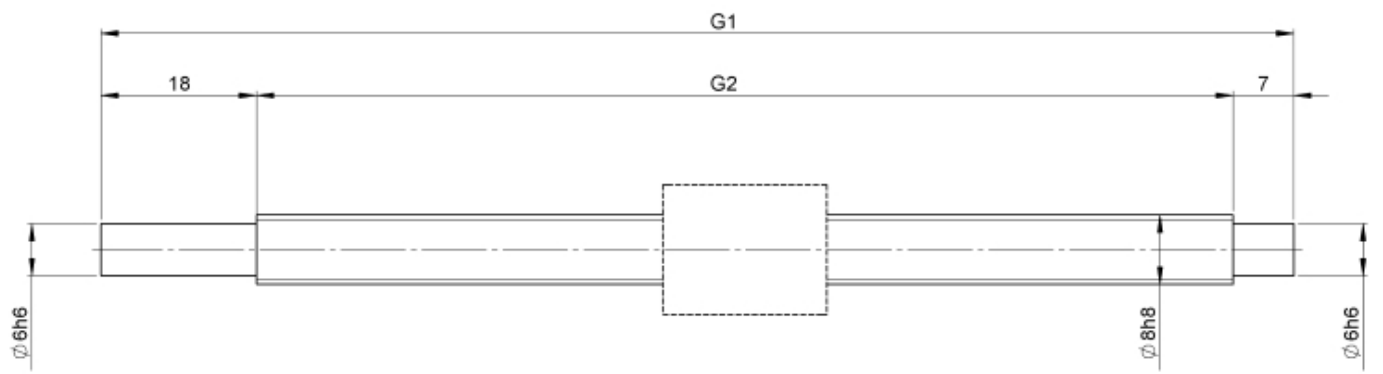
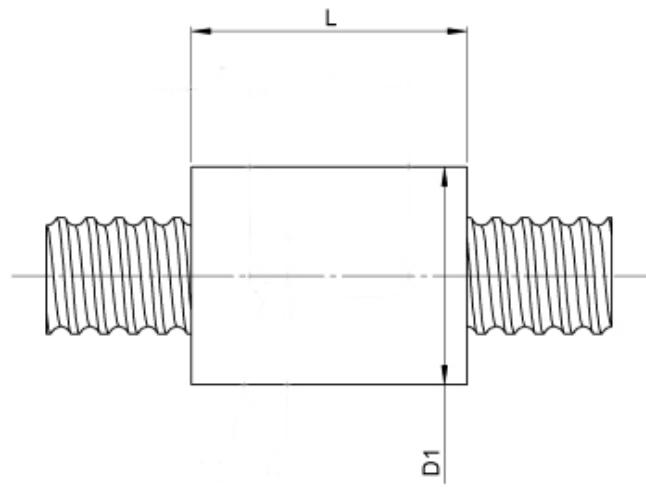
1214/4.8.245.270

DESCRIPTION

- Nut Series 1214 with [internal ball return](#)
- Cylindrical nut with 4-point-contact, without wipers
- Nut shape design for assembling in a housing
- Single start ball thread, ground execution according to accuracy class P1 - P5
- Miniature ball screws also available with axial play



TECHNICAL DATA AND DIMENSIONS



Series			1214	Friction torque TO			[Ncm]	0,5
Nominal diameter	[mm]	dN	8	Accuracy				P
Lead	[mm]	P	4	Nut length			[mm]	L 22
Ball circles		i	1x3	Dynamic load capacity			[kN]	Ca 2,00
Ball diameter	[mm]	dW	1,5	Static load capacity			[kN]	C0a 2,10
DN-value			120000	Pilot diameter			[mm]	D1 15
No. of starts			1	Pilot diameter tolerance			[mm]	h6
Friction torque FROM		[Ncm]	0,5					

August Steinmeyer GmbH & Co. KG | Riedstraße 7 | 72458 Albstadt | Phone +49 (0) 7431 1288-0 | Fax +49 (0) 7431 1288-89 | info@steinmeyer.com

Drive Technology, Ball Screws, Precision Ball Screws, Miniature Ball Screws, Ultra Thrust Ball Screws, Rotating Nuts, Cooled Ball Screws, Precision Lead Screws, Differential Rolled Screws, Rolled Ball Screws