

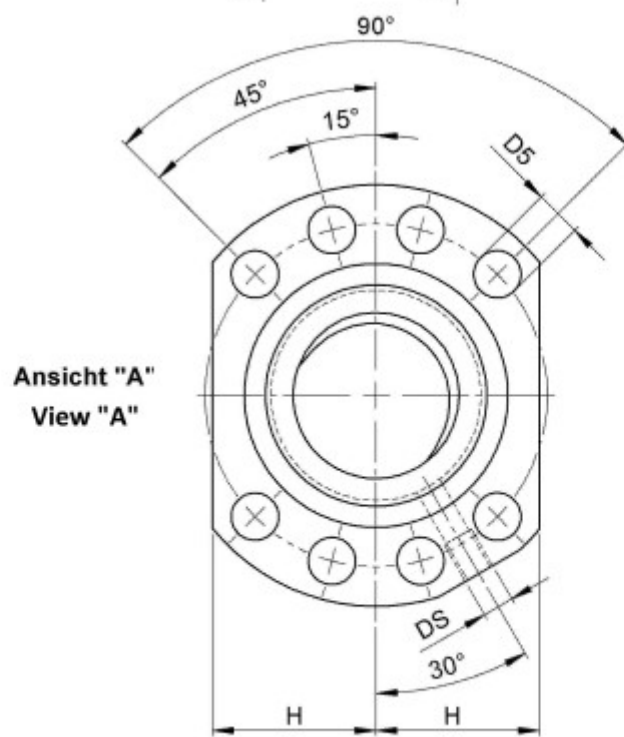
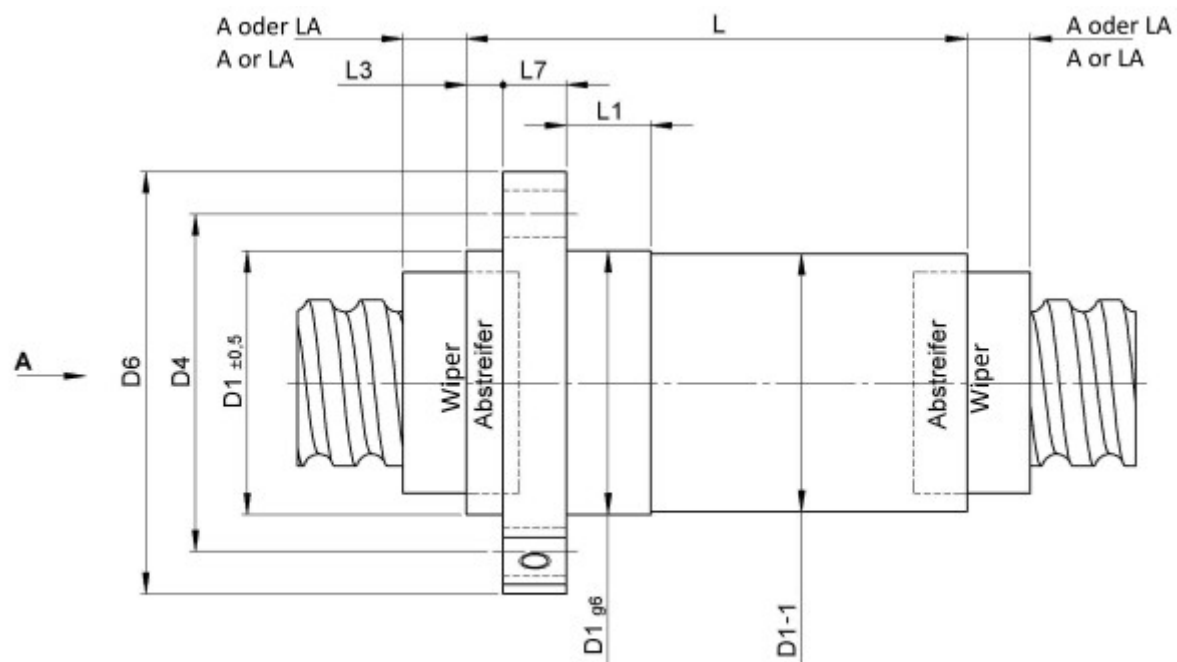
3526/20.50.7,5.5NE

DESCRIPTION

- **ETA+ Nut Series** with **external ball return**
- Flange nut with wipers on both ends
- Product photo shows combination wipers
- Nut shape according to DIN for assembly by flange
- Multiple start ball thread, ground execution according to accuracy class P1 - P5



TECHNICAL DATA AND DIMENSIONS



Form B
Shape B

Series			3526	Flange thickness	[mm]	L7	16
Nominal diameter	[mm]	dN	50	Dynamic load capacity	[kN]	Ca	108,20
Lead	[mm]	P	20	Static load capacity	[kN]	C0a	176,60
Ball circles		i	5+5	Ball diameter	[mm]	dW	7,5
Additional wiper extensions for combination wipers	[mm]	LA	12	DN-value			160000
Pilot Length	[mm]	L1	25	No. of starts			2
Pilot diameter	[mm]	D1	82	Stiffness	[N/μm]	Rnu,ar	1470
Pilot diameter tolerance	[mm]		g6	Friction torque FROM	[Ncm]		75,7
Bolt circle diameter	[mm]	D4	100	Friction torque TO	[Ncm]		140,7
Flange hole diameter		D5	11	Max. preload	[kN]		10,82
Lube hole	[mm]	DS	M8x1	Accuracy			P
Flange diameter	[mm]	D6	118	Nut length	[mm]	L	131
Flange flat dimension	[mm]	H	46	Wiper extension	[mm]	L3	7

August Steinmeyer GmbH & Co. KG | Riedstraße 7 | 72458 Albstadt | Phone +49 (0) 7431 1288-0 | Fax +49 (0) 7431 1288-89 | info@steinmeyer.com

Drive Technology, Ball Screws, Precision Ball Screws, Miniature Ball Screws, Ultra Thrust Ball Screws, Rotating Nuts, Cooled Ball Screws, Precision Lead Screws, Differential Rolled Screws, Rolled Ball Screws