

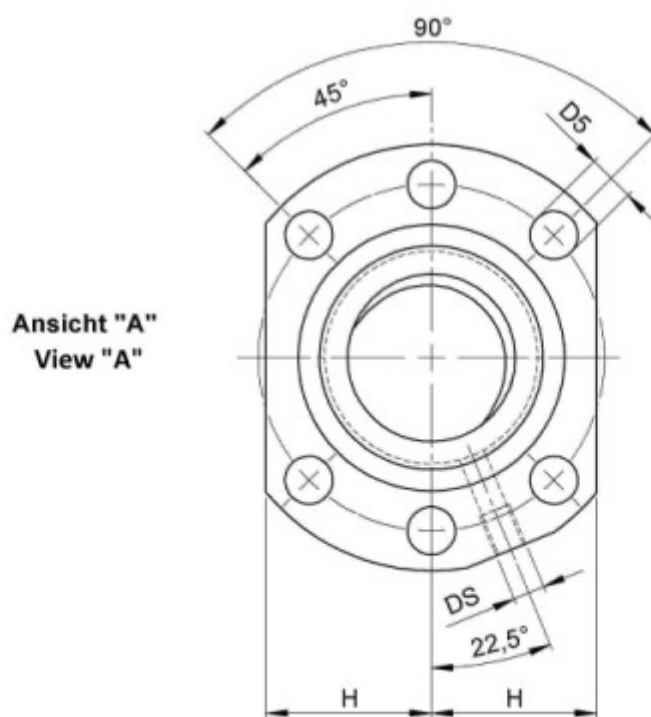
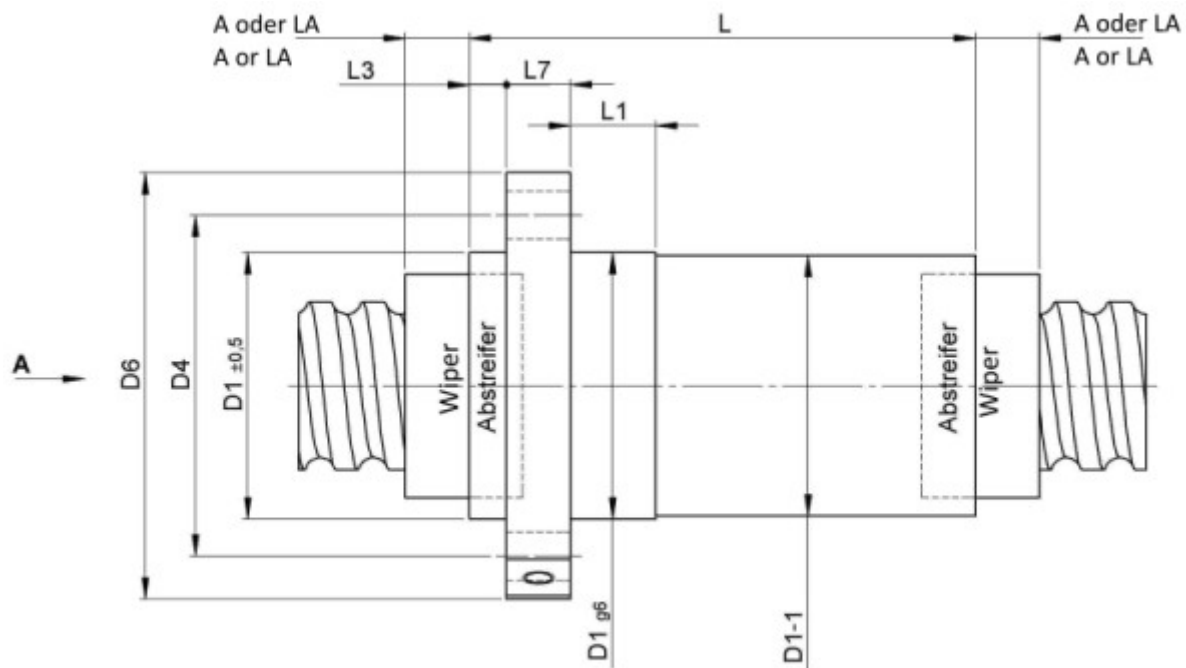
1516/5.20.3,5.4E

DESCRIPTION

- **ETA+ Nut Series** with **internal ball return**
- Flange nut, with standard wipers on both ends
- Nut shape according to DIN for assembly by flange
- Single start ball thread, ground execution according to accuracy class P1 - P5



TECHNICAL DATA AND DIMENSIONS



Form B
Shape B

Series			1516	Flange thickness	[mm]	L7	10
Nominal diameter	[mm]	dN	20	ETA+			x
Lead	[mm]	P	5	Dynamic load capacity	[kN]	Ca	20,40
Ball circles		i	2x4	Static load capacity	[kN]	C0a	24,30
Ball diameter	[mm]	dW	3,5	Additional wiper extensions for combination wipers	[mm]	LA	9
DN-value			82000	Pilot Length	[mm]	L1	10
No. of starts			1	Pilot diameter	[mm]	D1	36
Stiffness	[N/μm]	Rnu,ar	490	Pilot diameter tolerance	[mm]		g6
Friction torque FROM	[Ncm]		1,6	Bolt circle diameter	[mm]	D4	47
Friction torque TO	[Ncm]		14,7	Flange hole diameter		D5	6,6
Max. preload	[kN]		2,04	Lube hole	[mm]	DS	M6
Accuracy			P	Flange diameter	[mm]	D6	58
Nut length	[mm]	L	95	Flange flat dimension	[mm]	H	22
Wiper extension	[mm]	L3	6				

August Steinmeyer GmbH & Co. KG | info@steinmeyer.com

Drive Technology, Ball Screws, Precision Ball Screws, Miniature Ball Screws, Ultra Thrust Ball Screws, Rotating Nuts, Cooled Ball Screws, Precision Lead Screws, Differential Rolled Screws, Rolled Ball Screws