

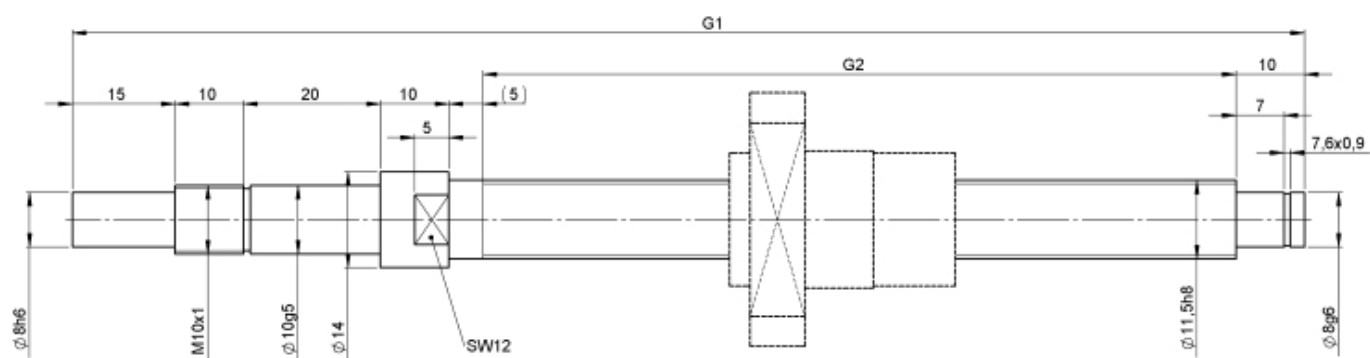
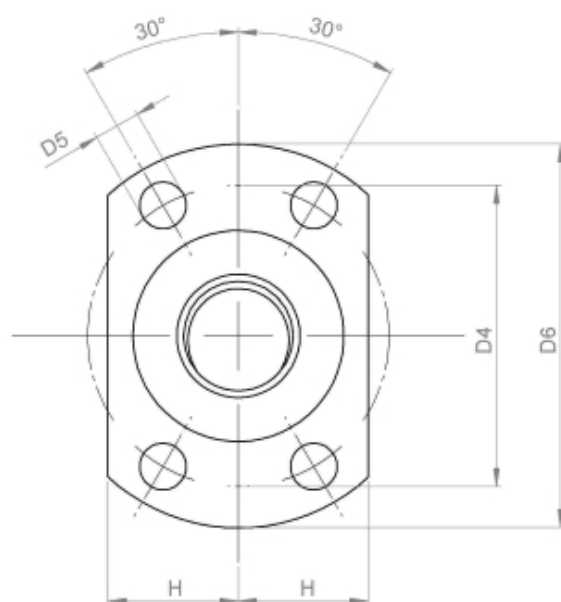
2422/10.12.510.580

DESCRIPTION

- Nut Series 2422 with [end cap ball return](#), Flange single nut with 4-point-contact, with standard synthetic wipers on both ends
- Nut shape design for assembly by flange
- Multiple start ball thread, ground execution according to accuracy class P1 - P5
- Miniature ball screws also available with axial play



TECHNICAL DATA AND DIMENSIONS



Series			2422	Flange thickness	[mm]	L7	8
Nominal diameter	[mm]	dN	12	Preferred standard series with shortened delivery times		S*	x
Lead	[mm]	P	10	Dynamic load capacity	[kN]	Ca	5,80
Ball circles		i	2+2	Static load capacity	[kN]	C0a	7,00
Ball diameter	[mm]	dW	2,5	Pilot Length	[mm]	L1	10
DN-value			160000	Pilot diameter	[mm]	D1	24
No. of starts			2	Pilot diameter tolerance	[mm]		g6
Friction torque FROM	[Ncm]		3,0	Bolt circle diameter	[mm]	D4	32
Friction torque TO	[Ncm]		3,0	Flange hole diameter		D5	4,5
Accuracy			P	Flange diameter	[mm]	D6	40
Nut length	[mm]	L	29	Flange flat dimension	[mm]	H	13
Wiper extension	[mm]	L3	9				

August Steinmeyer GmbH & Co. KG | info@steinmeyer.com

Drive Technology, Ball Screws, Precision Ball Screws, Miniature Ball Screws, Ultra Thrust Ball Screws, Rotating Nuts, Cooled Ball Screws, Precision Lead Screws, Differential Rolled Screws, Rolled Ball Screws