

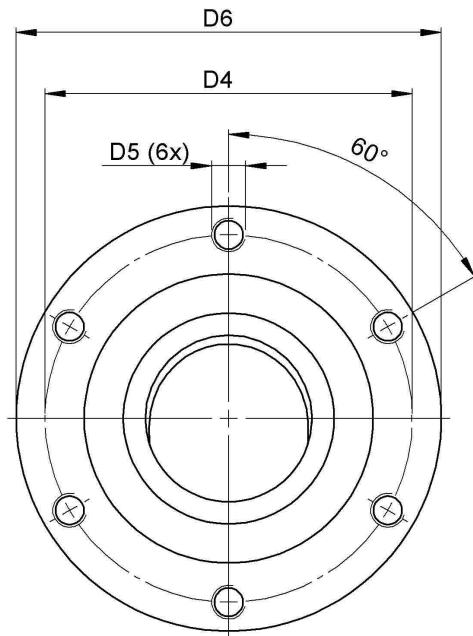
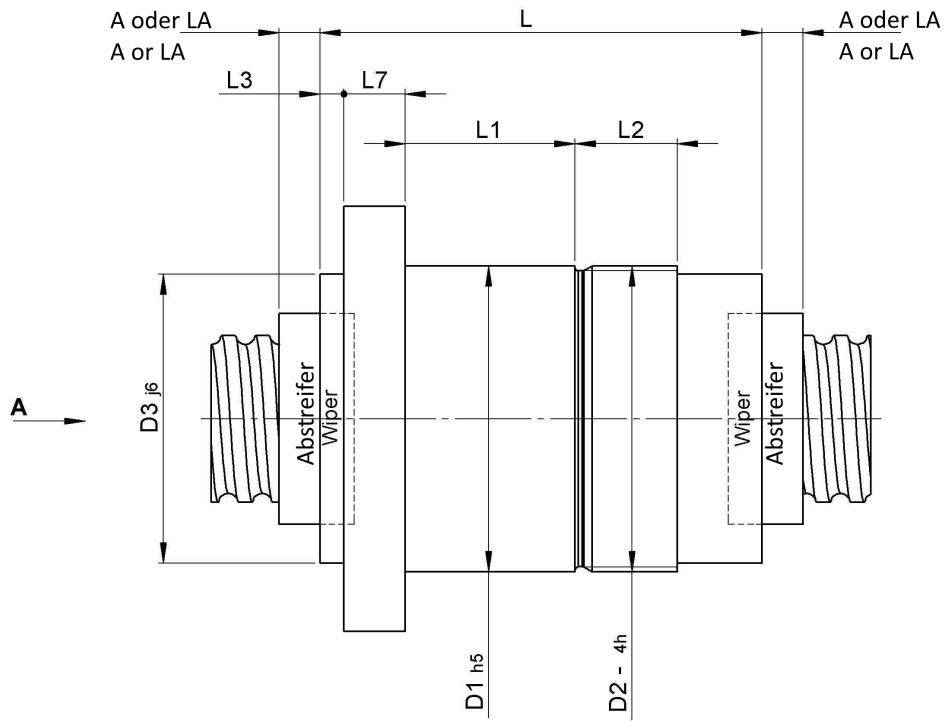
1414/20.25.3,5.4

DESCRIPTION

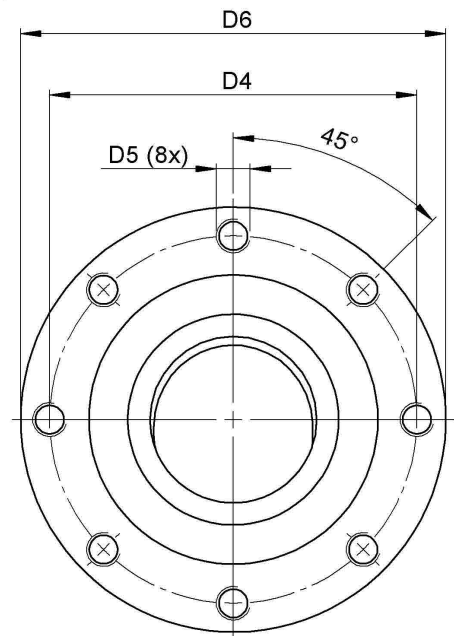
- Nut Series 1414 with [internal ball return](#), Flange single nut with 4-point-contact, with standard wipers on both ends
- Nut shape design for direct assembly of angular bearing, locknut and pulley
- Single start ball thread, ground execution according to accuracy class P1 - P5



TECHNICAL DATA AND DIMENSIONS



Nenndurchmesser
25 - 32mm
Nominal diameter
25 - 32mm



Nenndurchmesser
40 - 63mm
Nominal diameter
40 - 63mm

Ansicht "A"
View "A"

Series			1414	Wiper extension	[mm]	L3	7
Nominal diameter	[mm]	dN	25	Flange thickness	[mm]	L7	10
Lead	[mm]	P	20	Dynamic load capacity	[kN]	Ca	16,80
Ball circles		i	1x4	Static load capacity	[kN]	C0a	27,90
Ball diameter	[mm]	dW	3,5	Additional wiper extensions for combination wipers	[mm]	LA	-
DN-value			100000	Pilot Length	[mm]	L1	34
No. of starts			1	Pilot diameter	[mm]	D1	40
Stiffness	[N/μm]	Rnu,ar	150	Pilot diameter tolerance	[mm]		h5
Friction torque FROM	[Ncm]		6,7	Bolt circle diameter	[mm]	D4	51
Friction torque TO	[Ncm]		20,2	Flange hole diameter		D5	M6
Max. preload	[kN]		1,344	Flange diameter	[mm]	D6	62
Nut length	[mm]	L	82				

August Steinmeyer GmbH & Co. KG | Riedstraße 7 | 72458 Albstadt | Phone +49 (0) 7431 1288-0 | Fax +49 (0) 7431 1288-89 | info@steinmeyer.com

Drive Technology, Ball Screws, Precision Ball Screws, Miniature Ball Screws, Ultra Thrust Ball Screws, Rotating Nuts, Cooled Ball Screws, Precision Lead Screws, Differential Rolled Screws, Rolled Ball Screws