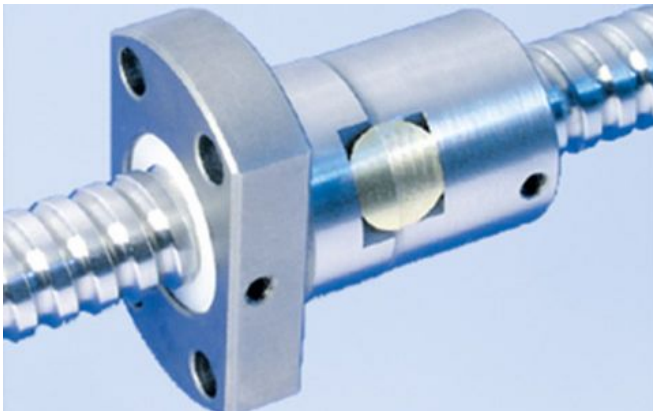


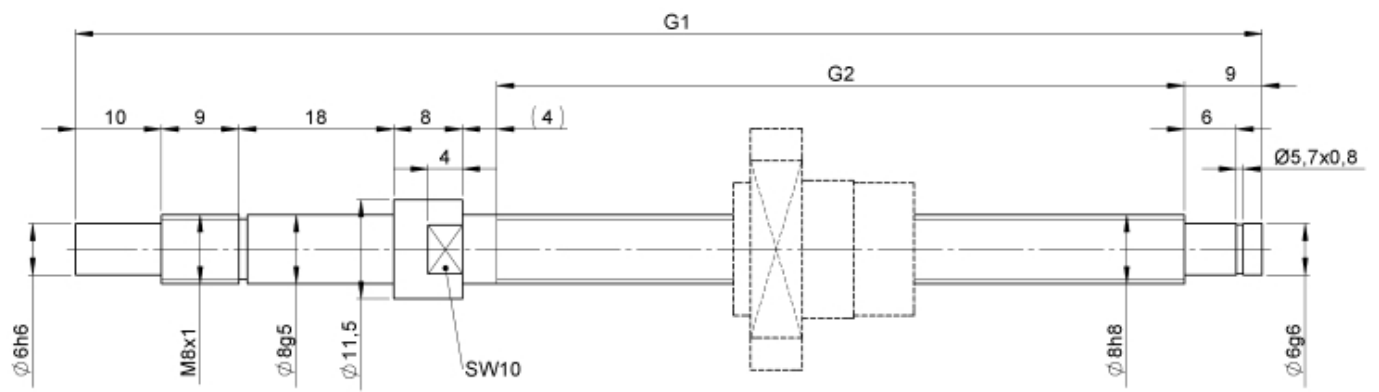
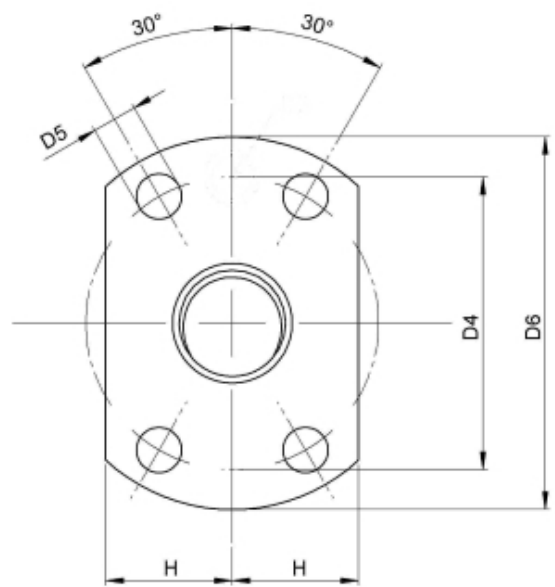
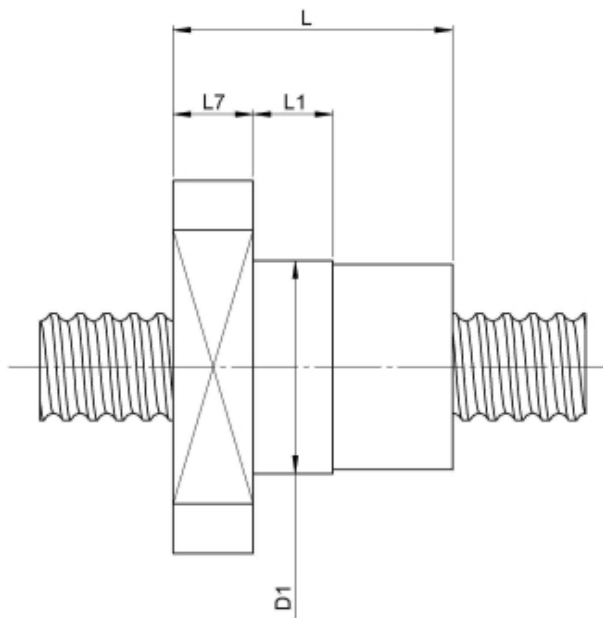
1412/3.8.190.248

DESCRIPTION

- Nut Series 1412 with [internal ball return](#), Flange single nut with 4-point-contact with standard synthetic wipers on both ends
- Nut shape design for assembly by flange
- Single start ball thread, ground execution according to accuracy class P1 - P5
- Miniature ball screws also available with axial play



TECHNICAL DATA AND DIMENSIONS



Series		1412		Nominal diameter	[mm]	dN	8
Flange thickness	[mm]	L7	6	Lead	[mm]	P	3
Dynamic load capacity	[kN]	Ca	2,00	Ball circles		i	1x3
Static load capacity	[kN]	C0a	2,10	Ball diameter	[mm]	dW	1,5
Pilot diameter	[mm]	D1	16	DN-value			120000
Pilot diameter tolerance	[mm]		g6	No. of starts			1
Bolt circle diameter	[mm]	D4	22	Friction torque FROM	[Ncm]		0,5
Flange hole diameter		D5	3,4	Friction torque TO	[Ncm]		0,5
Flange diameter	[mm]	D6	28	Accuracy			P
Flange flat dimension	[mm]	H	9,5	Nut length	[mm]	L	27

August Steinmeyer GmbH & Co. KG | Riedstraße 7 | 72458 Albstadt | Phone +49 (0) 7431 1288-0 | Fax +49 (0) 7431 1288-89 | info@steinmeyer.com

Drive Technology, Ball Screws, Precision Ball Screws, Miniature Ball Screws, Ultra Thrust Ball Screws, Rotating Nuts, Cooled Ball Screws, Precision Lead Screws, Differential Rolled Screws, Rolled Ball Screws