

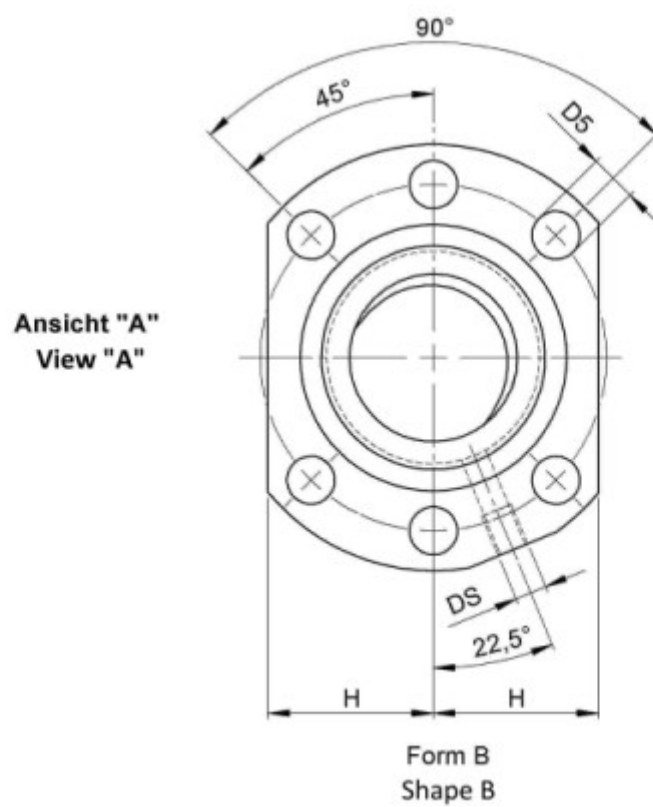
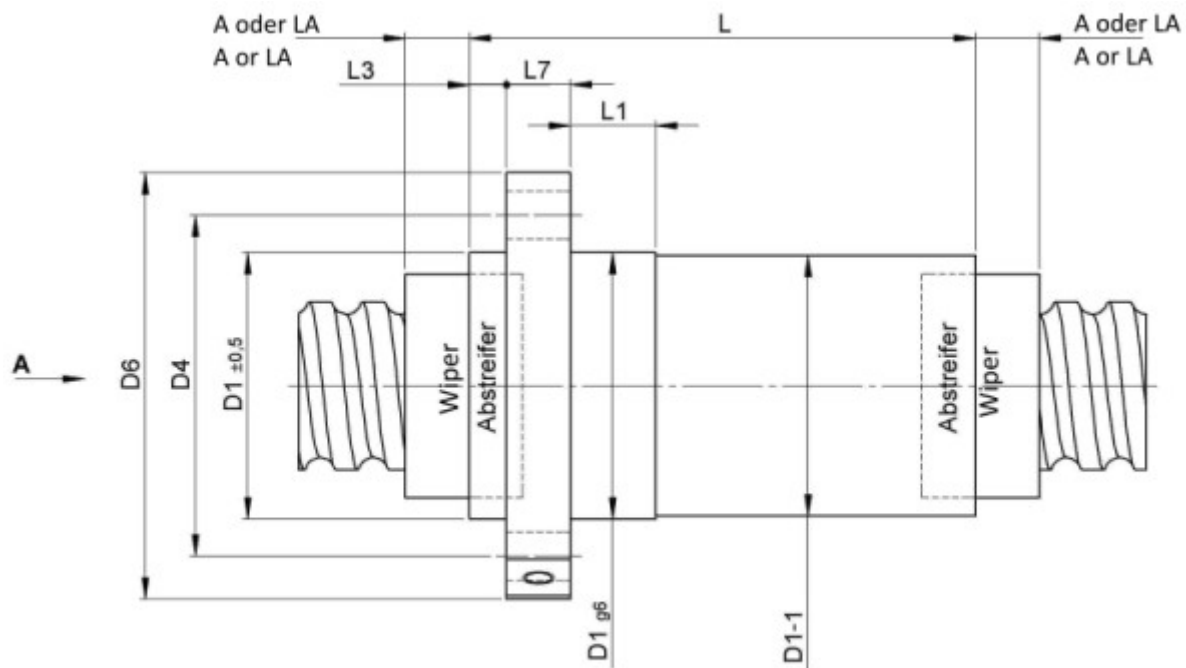
3426/20.32.6.3

DESCRIPTION

- Nut Series 3426 with [external ball return](#), Flange single nut with 4-point-contact, with standard synthetic wipers on both ends
- Nut shape according to DIN for assembly by flange
- Multiple start ball thread, ground execution according to accuracy class P1 - P5



TECHNICAL DATA AND DIMENSIONS



Series			3426	Wiper extension	[mm]	L3	7
Nominal diameter	[mm]	dN	32	Flange thickness	[mm]	L7	14
Lead	[mm]	P	20	Dynamic load capacity	[kN]	Ca	29,40
Ball circles		i	1,5+1,5	Static load capacity	[kN]	C0a	45,50
Ball diameter	[mm]	dW	6	Additional wiper extensions for combination wipers	[mm]	LA	12
DN-value			160000	Pilot Length	[mm]	L1	20
No. of starts			2	Pilot diameter	[mm]	D1	56
Stiffness	[N/μm]	Rnu,ar	270	Pilot diameter tolerance	[mm]		g6
Friction torque FROM	[Ncm]		15,1	Bolt circle diameter	[mm]	D4	71
Friction torque TO	[Ncm]		45,2	Flange hole diameter		D5	9
Max. preload	[kN]		2,352	Lube hole	[mm]	DS	M6x1
Accuracy			P	Flange diameter	[mm]	D6	86
Nut length	[mm]	L	88	Flange flat dimension	[mm]	H	32,5

August Steinmeyer GmbH & Co. KG | Riedstraße 7 | 72458 Albstadt | Phone +49 (0) 7431 1288-0 | Fax +49 (0) 7431 1288-89 | info@steinmeyer.com

Drive Technology, Ball Screws, Precision Ball Screws, Miniature Ball Screws, Ultra Thrust Ball Screws, Rotating Nuts, Cooled Ball Screws, Precision Lead Screws, Differential Rolled Screws, Rolled Ball Screws