

# 2526/10.20.3,5.5E

---

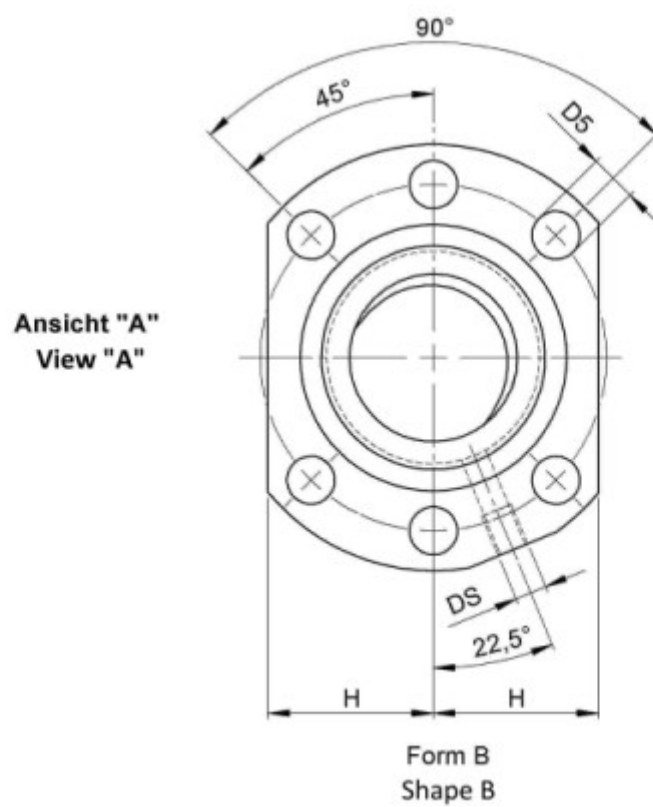
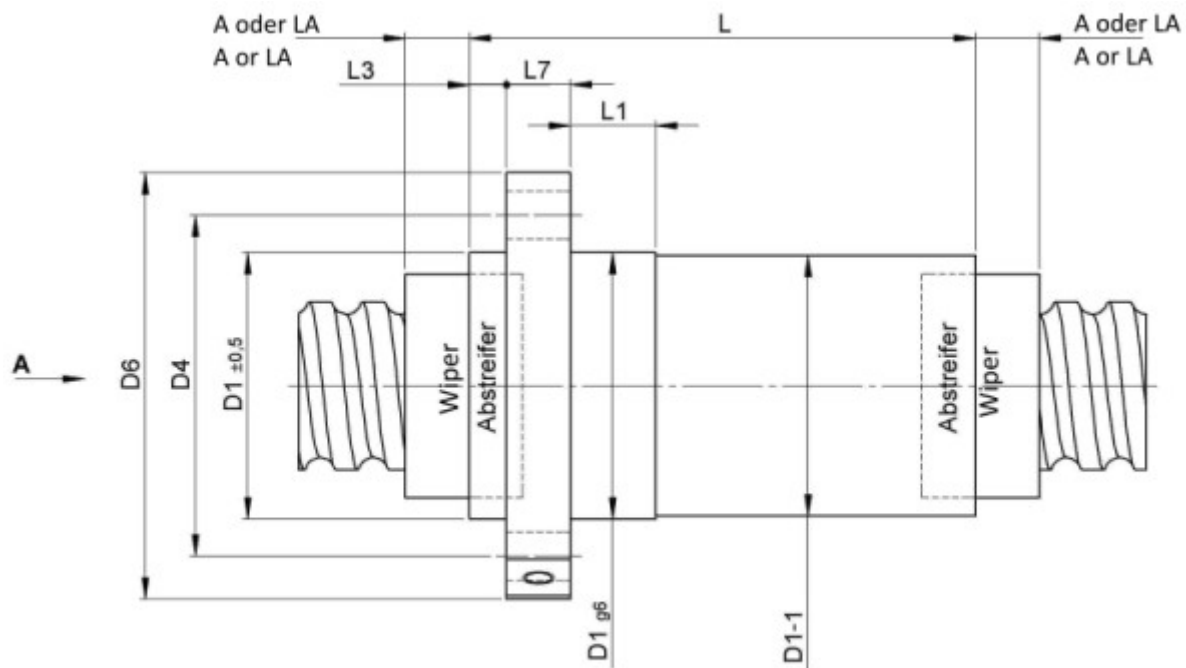
## DESCRIPTION

- **ETA+ Nut Series** with **end cap ball return**
- Flange nut with standard wipers on both ends
- Nut shape according to DIN for assembly by flange
- Multiple start ball thread, ground execution according to accuracy class P1 - P5



---

## TECHNICAL DATA AND DIMENSIONS



Series			2526	Flange thickness	[mm]	L7	10
Nominal diameter	[mm]	dN	20	ETA+			x
Lead	[mm]	P	10	Dynamic load capacity	[kN]	Ca	25,20
Ball circles		i	5+5	Static load capacity	[kN]	C0a	32,50
Ball diameter	[mm]	dW	3,5	Additional wiper extensions for combination wipers	[mm]	LA	-
DN-value			160000	Pilot Length	[mm]	L1	16
No. of starts			2	Pilot diameter	[mm]	D1	36
Stiffness	[N/μm]	Rnu,ar	590	Pilot diameter tolerance	[mm]		g6
Friction torque FROM	[Ncm]		5,0	Bolt circle diameter	[mm]	D4	47
Friction torque TO	[Ncm]		15,1	Flange hole diameter		D5	6,6
Max. preload	[kN]		2,52	Lube hole	[mm]	DS	M6x1
Accuracy			P	Flange diameter	[mm]	D6	58
Nut length	[mm]	L	69	Flange flat dimension	[mm]	H	22
Wiper extension	[mm]	L3	7				

August Steinmeyer GmbH & Co. KG | Riedstraße 7 | 72458 Albstadt | Phone +49 (0) 7431 1288-0 | Fax +49 (0) 7431 1288-89 | [info@steinmeyer.com](mailto:info@steinmeyer.com)

Drive Technology, Ball Screws, Precision Ball Screws, Miniature Ball Screws, Ultra Thrust Ball Screws, Rotating Nuts, Cooled Ball Screws, Precision Lead Screws, Differential Rolled Screws, Rolled Ball Screws