

# 1516/10.40.6.3E

---

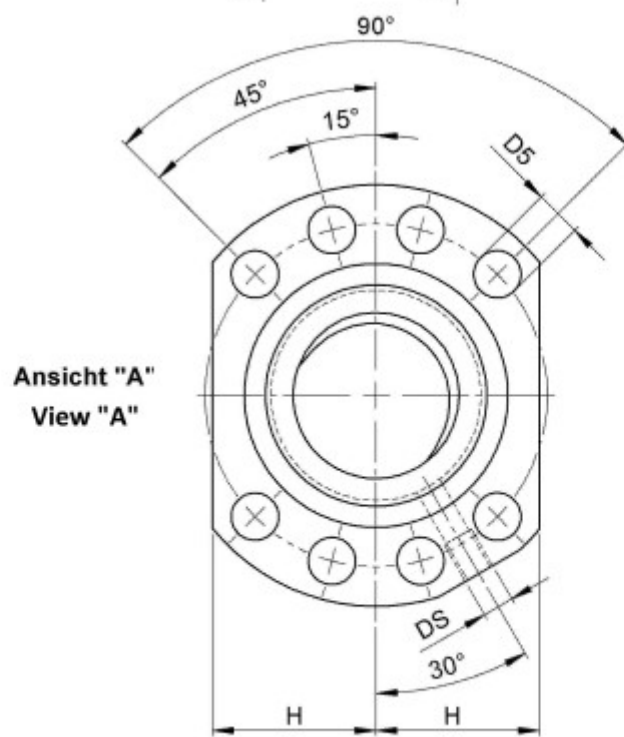
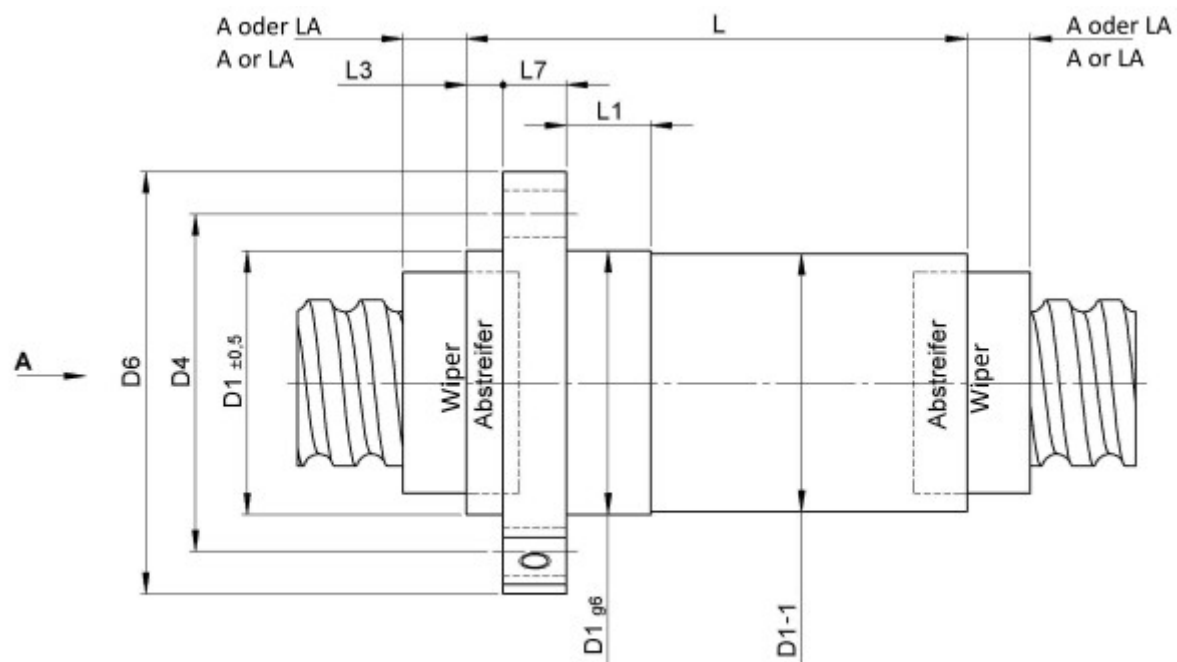
## DESCRIPTION

- **ETA+ Nut Series** with **internal ball return**
- Flange nut, with standard wipers on both ends
- Nut shape according to DIN for assembly by flange
- Single start ball thread, ground execution according to accuracy class P1 - P5



---

## TECHNICAL DATA AND DIMENSIONS



Form B  
Shape B

Series			1516	Flange thickness	[mm]	L7	14
Nominal diameter	[mm]	dN	40	ETA+			x
Lead	[mm]	P	10	Dynamic load capacity	[kN]	Ca	46,40
Ball circles		i	3+3	Static load capacity	[kN]	C0a	64,90
Ball diameter	[mm]	dW	6	Additional wiper extensions for combination wipers	[mm]	LA	12
DN-value			120000	Pilot Length	[mm]	L1	16
No. of starts			1	Pilot diameter	[mm]	D1	63
Stiffness	[N/μm]	Rnu,ar	710	Pilot diameter tolerance	[mm]		g6
Friction torque FROM	[Ncm]		18,6	Bolt circle diameter	[mm]	D4	78
Friction torque TO	[Ncm]		55,7	Flange hole diameter		D5	9
Max. preload	[kN]		4,64	Lube hole	[mm]	DS	M8x1
Accuracy			P	Flange diameter	[mm]	D6	93
Nut length	[mm]	L	136	Flange flat dimension	[mm]	H	35
Wiper extension	[mm]	L3	7				

August Steinmeyer GmbH & Co. KG | Riedstraße 7 | 72458 Albstadt | Phone +49 (0) 7431 1288-0 | Fax +49 (0) 7431 1288-89 | [info@steinmeyer.com](mailto:info@steinmeyer.com)

Drive Technology, Ball Screws, Precision Ball Screws, Miniature Ball Screws, Ultra Thrust Ball Screws, Rotating Nuts, Cooled Ball Screws, Precision Lead Screws, Differential Rolled Screws, Rolled Ball Screws