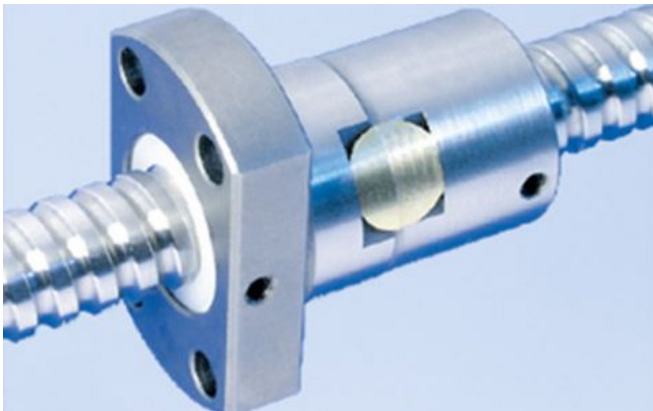


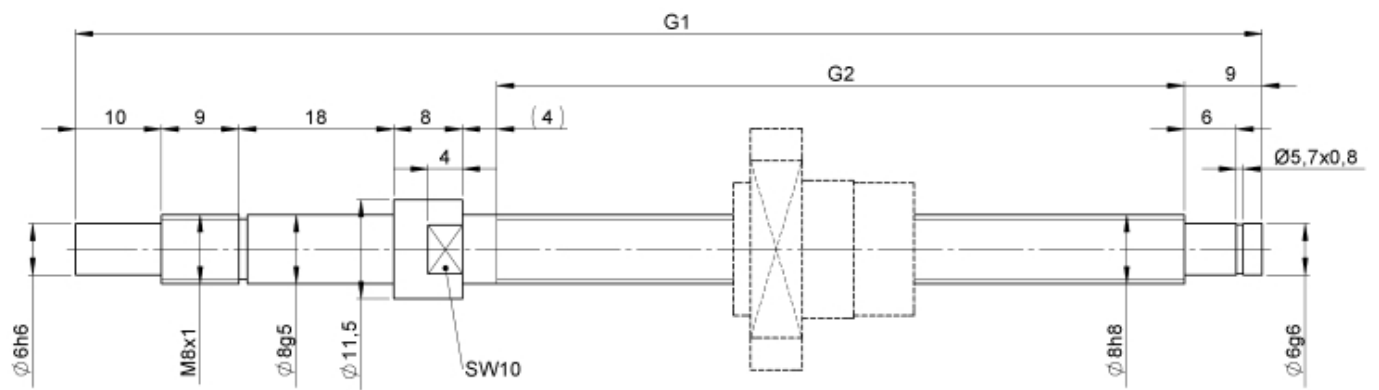
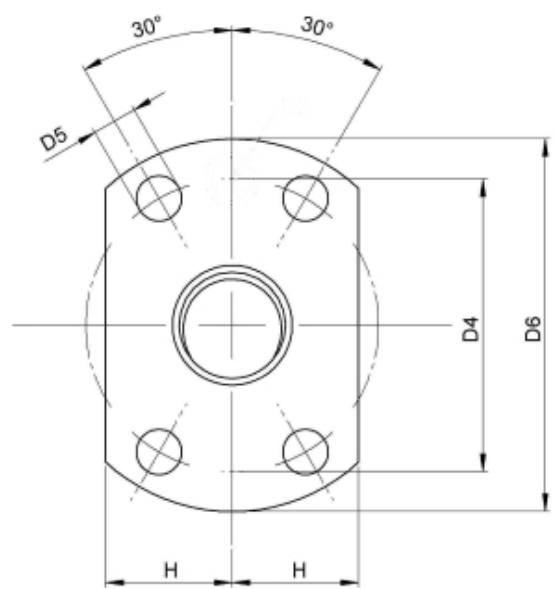
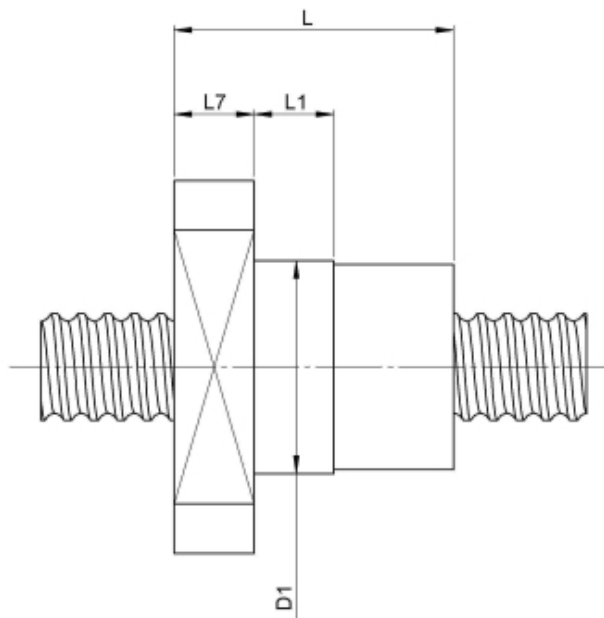
1412/1.8.190.248

DESCRIPTION

- Nut Series 1412 with [internal ball return](#), Flange single nut with 4-point-contact with standard synthetic wipers on both ends
- Nut shape design for assembly by flange
- Single start ball thread, ground execution according to accuracy class P1 - P5
- Miniature ball screws also available with axial play



TECHNICAL DATA AND DIMENSIONS



| | | | | | | | |
|--------------------------|------|------|------|----------------------|-------|----|--------|
| Series | | 1412 | | Nominal diameter | [mm] | dN | 8 |
| Flange thickness | [mm] | L7 | 6 | Lead | [mm] | P | 1 |
| Dynamic load capacity | [kN] | Ca | 0,90 | Ball circles | | i | 1x3 |
| Static load capacity | [kN] | C0a | 1,20 | Ball diameter | [mm] | dW | 0,8 |
| Pilot diameter | [mm] | D1 | 16 | DN-value | | | 120000 |
| Pilot diameter tolerance | [mm] | | g6 | No. of starts | | | 1 |
| Bolt circle diameter | [mm] | D4 | 22 | Friction torque FROM | [Ncm] | | 2,0 |
| Flange hole diameter | | D5 | 3,4 | Friction torque TO | [Ncm] | | 2,0 |
| Flange diameter | [mm] | D6 | 28 | Accuracy | | | P |
| Flange flat dimension | [mm] | H | 9,5 | Nut length | [mm] | L | 23 |

August Steinmeyer GmbH & Co. KG | info@steinmeyer.com

Drive Technology, Ball Screws, Precision Ball Screws, Miniature Ball Screws, Ultra Thrust Ball Screws, Rotating Nuts, Cooled Ball Screws, Precision Lead Screws, Differential Rolled Screws, Rolled Ball Screws