

# 1416/5.20.3,5.4

---

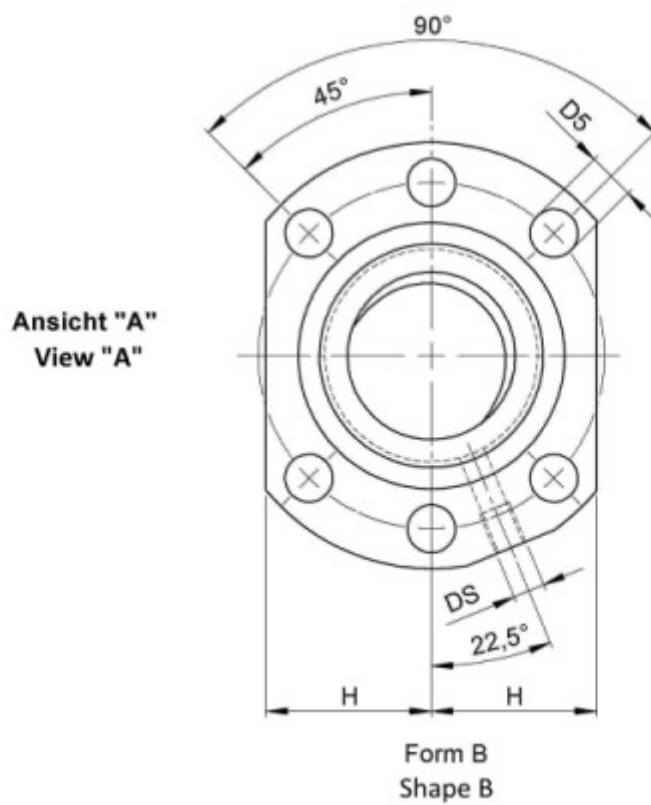
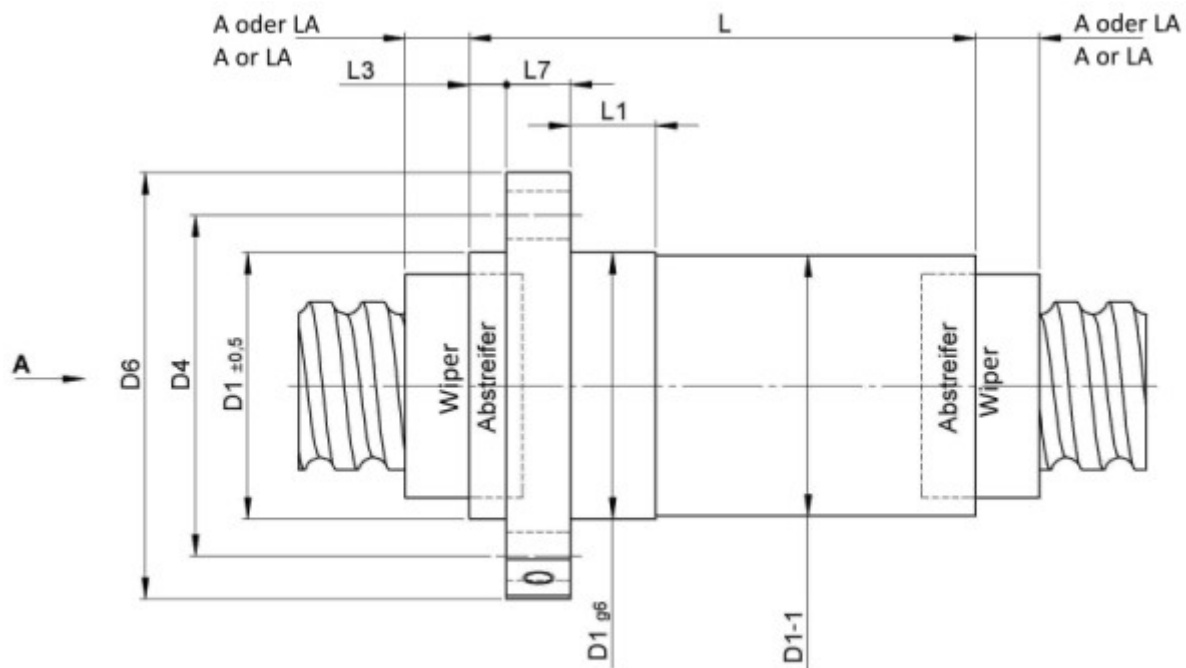
## DESCRIPTION

- Nut Series 1416 with [internal ball return](#), Flange single nut with 4-point-contact with standard synthetic wipers on both ends
- Nut shape according to DIN for assembly by flange
- Single start ball thread, ground execution according to accuracy class P1 - P5



---

## TECHNICAL DATA AND DIMENSIONS



Series			1416	Flange thickness	[mm]	L7	10
Nominal diameter	[mm]	dN	20	Dynamic load capacity	[kN]	Ca	15,50
Lead	[mm]	P	5	Static load capacity	[kN]	C0a	22,30
Ball circles		i	1x4	Ball diameter	[mm]	dW	3,5
Additional wiper extensions for combination wipers		[mm]	LA	9	DN-value		120000
Pilot Length	[mm]	L1	10	No. of starts			1
Pilot diameter	[mm]	D1	36	Stiffness	[N/μm]	Rnu,ar	270
Pilot diameter tolerance	[mm]		g6	Friction torque FROM	[Ncm]		2,0
Bolt circle diameter	[mm]	D4	47	Friction torque TO	[Ncm]		17,9
Flange hole diameter		D5	6,6	Max. preload	[kN]		1,24
Lube hole	[mm]	DS	M6x1	Accuracy			P
Flange diameter	[mm]	D6	58	Nut length	[mm]	L	60
Flange flat dimension	[mm]	H	22	Wiper extension	[mm]	L3	6

August Steinmeyer GmbH & Co. KG | [info@steinmeyer.com](mailto:info@steinmeyer.com)

Drive Technology, Ball Screws, Precision Ball Screws, Miniature Ball Screws, Ultra Thrust Ball Screws, Rotating Nuts, Cooled Ball Screws, Precision Lead Screws, Differential Rolled Screws, Rolled Ball Screws