

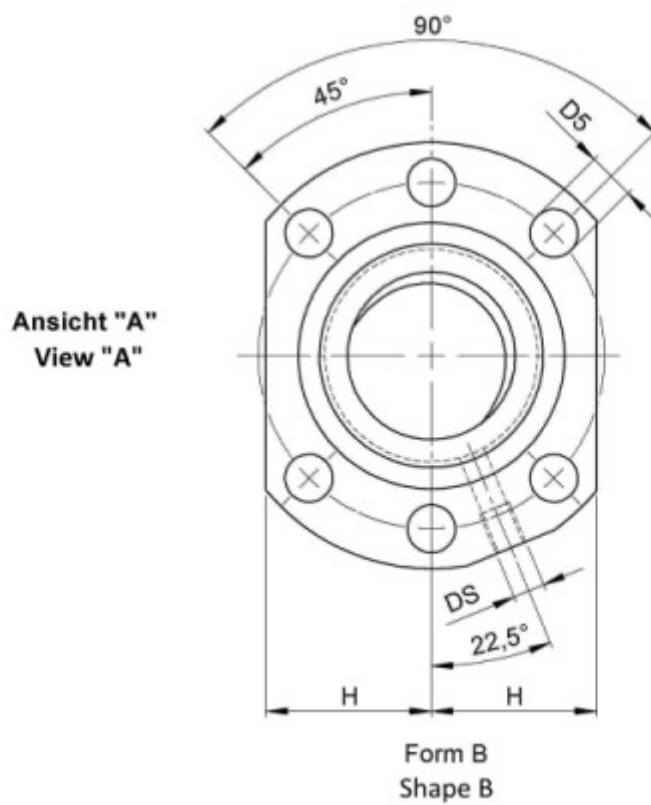
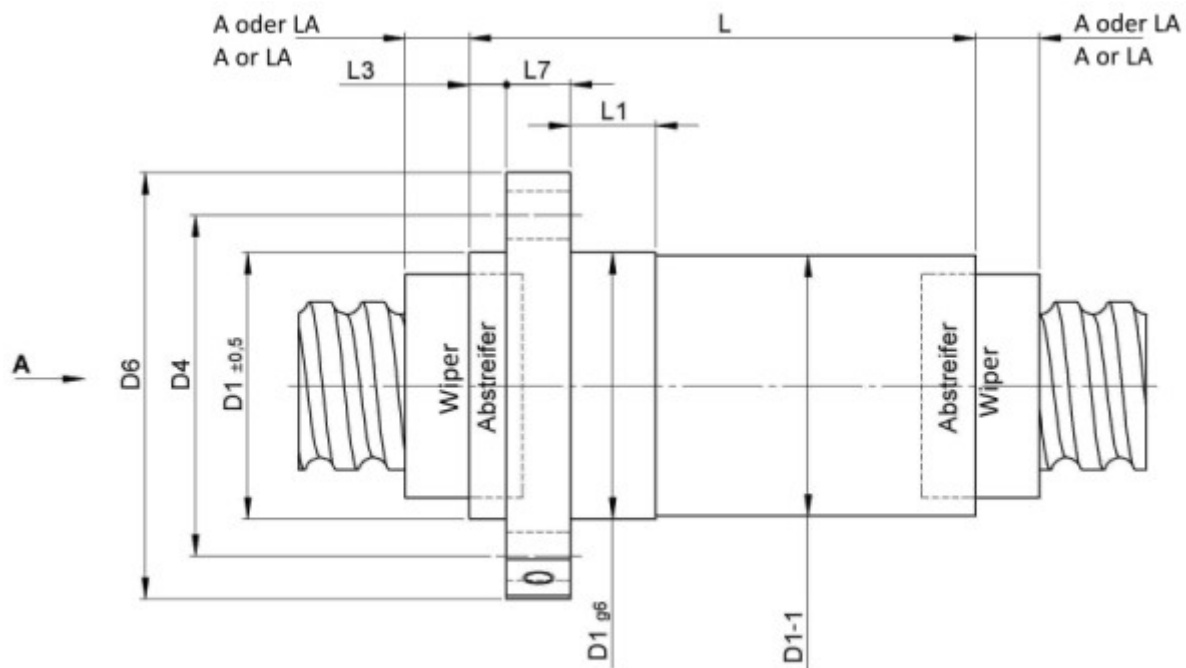
2426/10.16.3,5.8

DESCRIPTION

- Nut Series 2426 with [end cap ball return](#), Flange single nut with 4-point-contact with standard synthetic wipers on both ends
- Nut shape according to DIN for assembly by flange
- Multiple start ball thread, ground execution according to accuracy class P1 - P5



TECHNICAL DATA AND DIMENSIONS



Series		2426		Flange thickness	[mm]	L7	10
Nominal diameter	[mm]	dN	16	Dynamic load capacity	[kN]	Ca	25,60
Lead	[mm]	P	10	Static load capacity	[kN]	C0a	37,70
Ball circles		i	4+4	Ball diameter	[mm]	dW	3,5
Additional wiper extensions for combination wipers	[mm]	LA	-	DN-value			160000
Pilot Length	[mm]	L1	16	No. of starts			2
Pilot diameter	[mm]	D1	32	Stiffness	[N/μm]	Rnu,ar	360
Pilot diameter tolerance	[mm]		g6	Friction torque FROM	[Ncm]		6,6
Bolt circle diameter	[mm]	D4	42	Friction torque TO	[Ncm]		19,7
Flange hole diameter		D5	5,5	Max. preload	[kN]		2,048
Lube hole	[mm]	DS	M6x1	Accuracy			P
Flange diameter	[mm]	D6	52	Nut length	[mm]	L	54
Flange flat dimension	[mm]	H	20	Wiper extension	[mm]	L3	12

August Steinmeyer GmbH & Co. KG | Riedstraße 7 | 72458 Albstadt | Phone +49 (0) 7431 1288-0 | Fax +49 (0) 7431 1288-89 | info@steinmeyer.com

Drive Technology, Ball Screws, Precision Ball Screws, Miniature Ball Screws, Ultra Thrust Ball Screws, Rotating Nuts, Cooled Ball Screws, Precision Lead Screws, Differential Rolled Screws, Rolled Ball Screws