

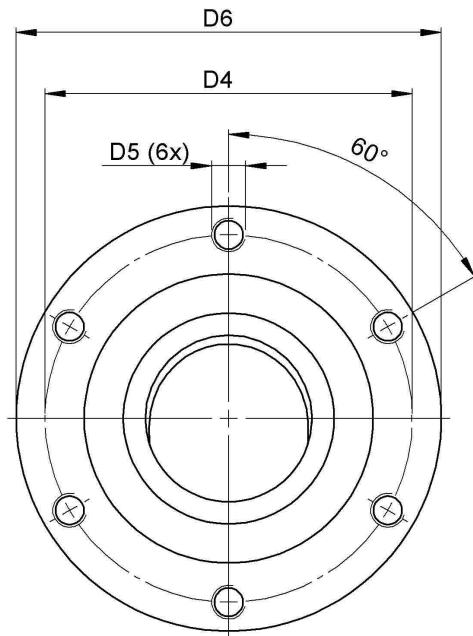
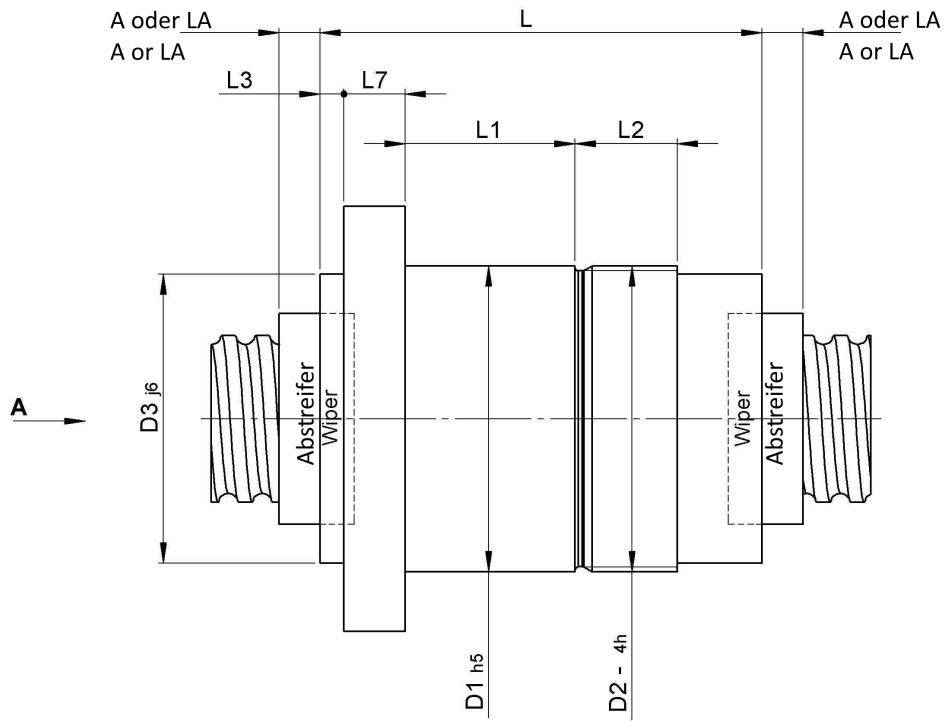
1414/20.40.7,5.3

DESCRIPTION

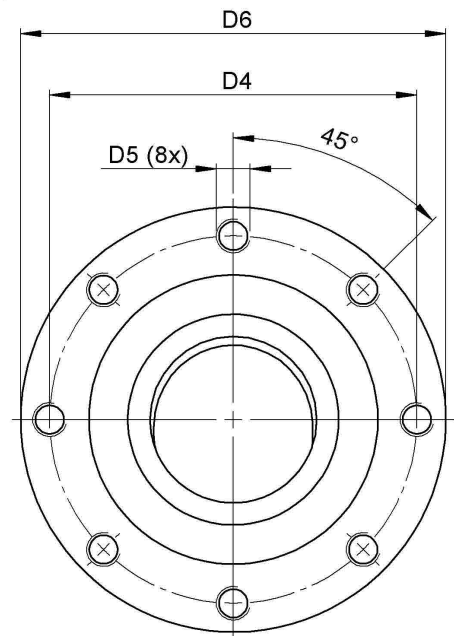
- Nut Series 1414 with [internal ball return](#), Flange single nut with 4-point-contact, with standard wipers on both ends
- Nut shape design for direct assembly of angular bearing, locknut and pulley
- Single start ball thread, ground execution according to accuracy class P1 - P5



TECHNICAL DATA AND DIMENSIONS



Nenndurchmesser
25 - 32mm
Nominal diameter
25 - 32mm



Nenndurchmesser
40 - 63mm
Nominal diameter
40 - 63mm

Ansicht "A"
View "A"

Series			1414	Wiper extension	[mm]	L3	7
Nominal diameter	[mm]	dN	40	Flange thickness	[mm]	L7	14
Lead	[mm]	P	20	Dynamic load capacity	[kN]	Ca	45,50
Ball circles		i	1x3	Static load capacity	[kN]	C0a	70,70
Ball diameter	[mm]	dW	7,5	DN-value			120000
Additional wiper extensions	[mm]	LA	12	No. of starts			1
for combination wipers							
Pilot Length	[mm]	L1	45	Stiffness	[N/μm]	Rnu,ar	300
Pilot diameter	[mm]	D1	70	Friction torque FROM	[Ncm]		34,9
Pilot diameter tolerance	[mm]		h5	Friction torque TO	[Ncm]		81,5
Bolt circle diameter	[mm]	D4	78	Max. preload	[kN]		3,640
Flange hole diameter		D5	M6	Nut length	[mm]	L	117
Flange diameter	[mm]	D6	93				

August Steinmeyer GmbH & Co. KG | Riedstraße 7 | 72458 Albstadt | Phone +49 (0) 7431 1288-0 | Fax +49 (0) 7431 1288-89 | info@steinmeyer.com

Drive Technology, Ball Screws, Precision Ball Screws, Miniature Ball Screws, Ultra Thrust Ball Screws, Rotating Nuts, Cooled Ball Screws, Precision Lead Screws, Differential Rolled Screws, Rolled Ball Screws