

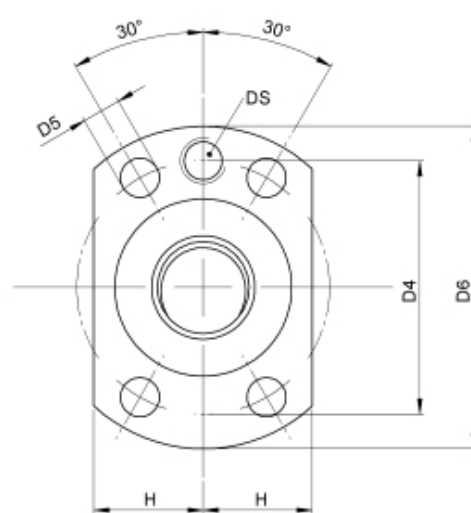
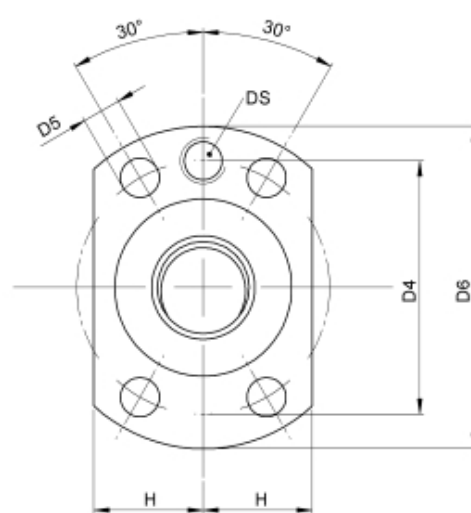
2422/30.16.689.771

DESCRIPTION

- Nut Series 2422 with [end cap ball return](#), Flange single nut with 4-point-contact, with standard synthetic wipers on both ends
- Nut shape design for assembly by flange
- Multiple start ball thread, ground execution according to accuracy class P1 - P5
- Miniature ball screws also available with axial play



TECHNICAL DATA AND DIMENSIONS



Series			2422	Flange thickness	[mm]	L7	10
Nominal diameter	[mm]	dN	16	Dynamic load capacity	[kN]	Ca	6,10
Lead	[mm]	P	30	Static load capacity	[kN]	C0a	7,90
Ball circles		i	1+1	Pilot Length	[mm]	L1	5
Ball diameter	[mm]	dW	3,5	Pilot diameter	[mm]	D1	32
DN-value			160000	Pilot diameter tolerance	[mm]		g6
No. of starts			2	Bolt circle diameter	[mm]	D4	42
Friction torque FROM	[Ncm]		4,0	Flange hole diameter		D5	5,5
Friction torque TO	[Ncm]		4,0	Lube hole	[mm]	DS	M6x1
Accuracy			P	Flange diameter	[mm]	D6	52
Nut length	[mm]	L	38	Flange flat dimension	[mm]	H	20
Wiper extension	[mm]	L3	12				

August Steinmeyer GmbH & Co. KG | Riedstraße 7 | 72458 Albstadt | Phone +49 (0) 7431 1288-0 | Fax +49 (0) 7431 1288-89 | info@steinmeyer.com

Drive Technology, Ball Screws, Precision Ball Screws, Miniature Ball Screws, Ultra Thrust Ball Screws, Rotating Nuts, Cooled Ball Screws, Precision Lead Screws, Differential Rolled Screws, Rolled Ball Screws