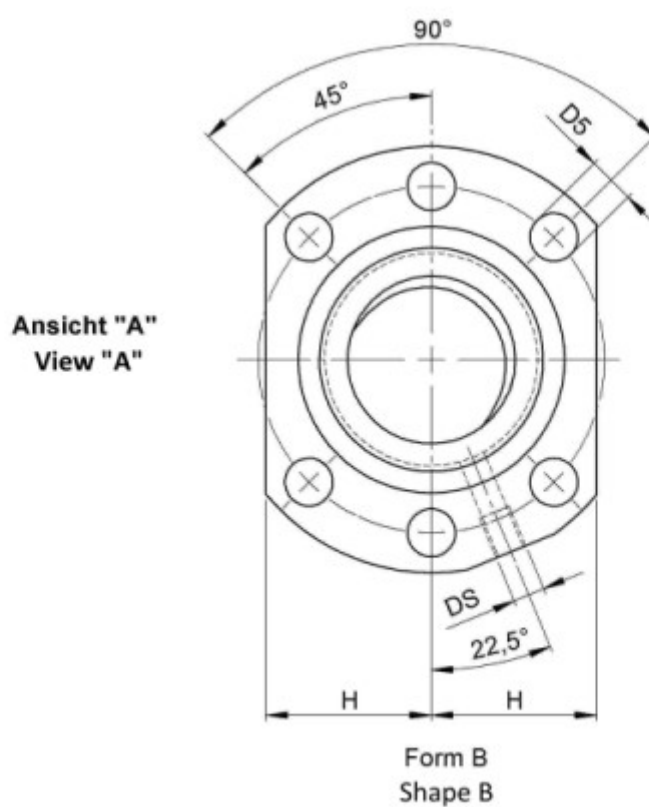
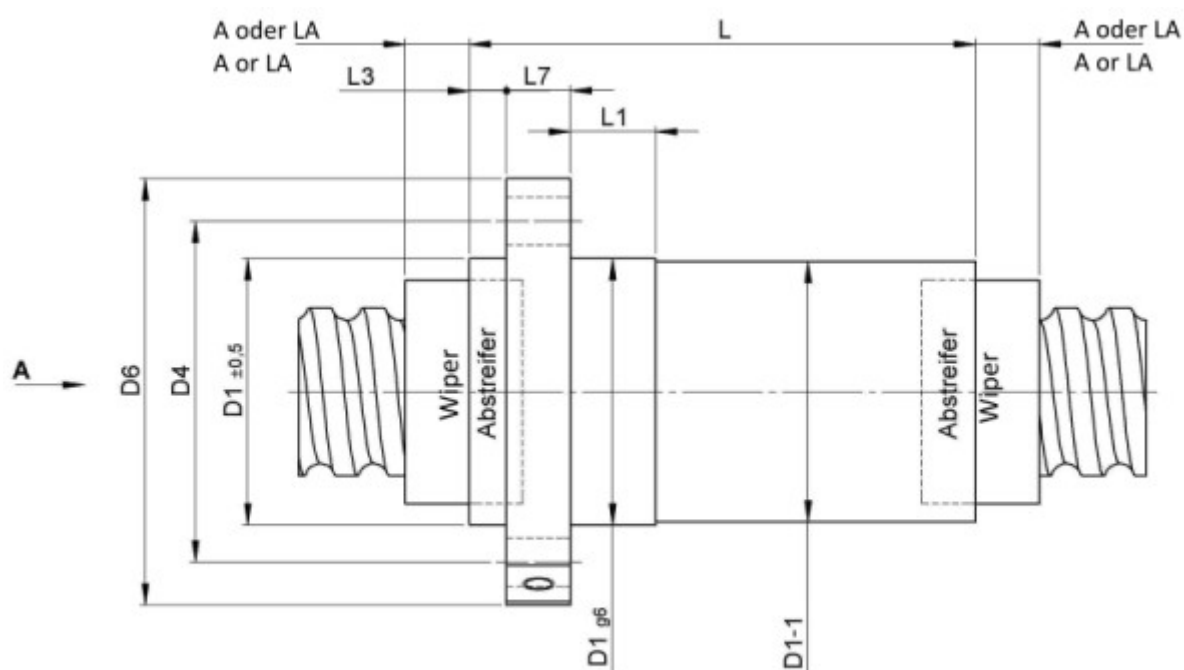


1436/6.32.4.3

DESCRIPTION

TECHNICAL DATA AND DIMENSIONS



Series			1436	Dynamic load capacity	[kN]	Ca	18,70
Nominal diameter	[mm]	dN	32	Static load capacity	[kN]	C0a	32,70
Lead	[mm]	P	6	Ball circles		i	1x3
Additional wiper extensions for combination wipers	[mm]	LA	9	Ball diameter	[mm]	dW	4
Pilot Length	[mm]	L1	10	DN-value			108800
Pilot diameter	[mm]	D1	50	No. of starts			1
Pilot diameter tolerance	[mm]		g6	Friction torque FROM	[Ncm]		9,6
Bolt circle diameter	[mm]	D4	65	Friction torque TO	[Ncm]		28,7
Flange hole diameter		D5	9	Accuracy			T
Lube hole	[mm]	DS	M6	Nut length	[mm]	L	61
Flange diameter	[mm]	D6	80	Wiper extension	[mm]	L3	6
Flange flat dimension	[mm]	H	31	Flange thickness	[mm]	L7	12

August Steinmeyer GmbH & Co. KG | Riedstraße 7 | 72458 Albstadt | Phone +49 (0) 7431 1288-0 | Fax +49 (0) 7431 1288-89 | info@steinmeyer.com

Drive Technology, Ball Screws, Precision Ball Screws, Miniature Ball Screws, Ultra Thrust Ball Screws, Rotating Nuts, Cooled Ball Screws, Precision Lead Screws, Differential Rolled Screws, Rolled Ball Screws