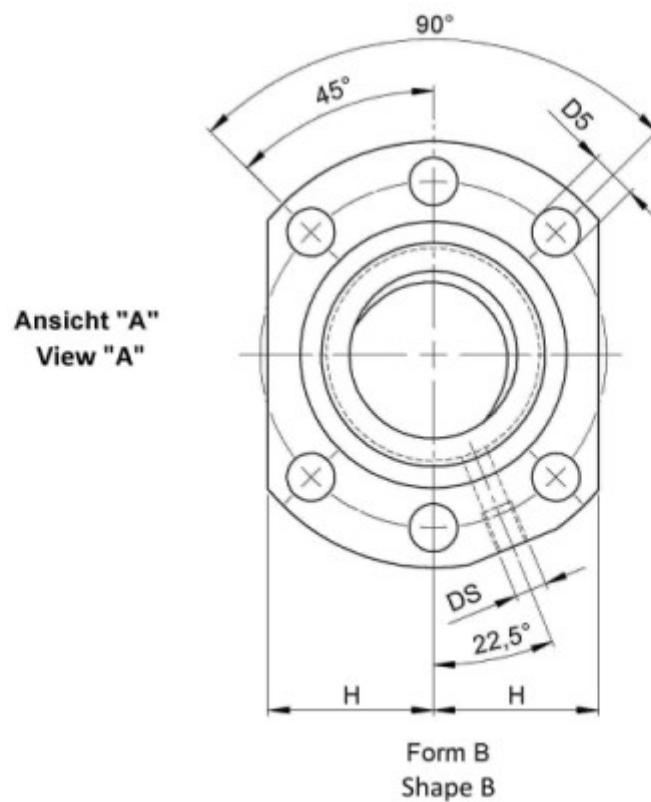
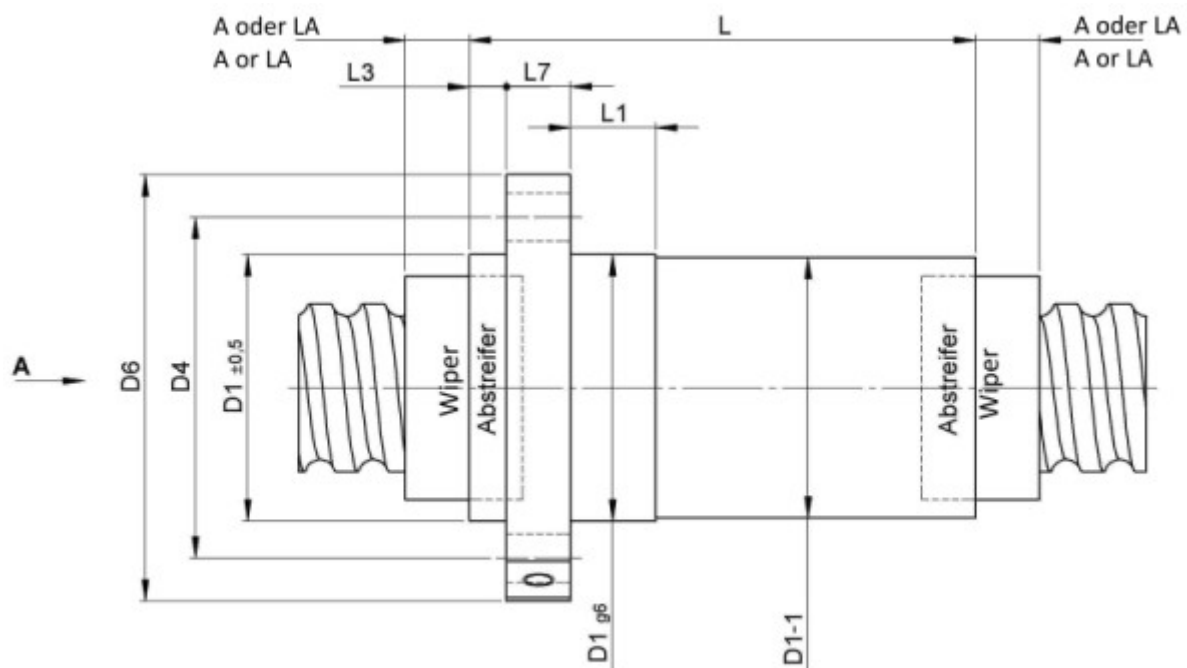


# 1426/20.32.6.3

## DESCRIPTION

## TECHNICAL DATA AND DIMENSIONS



Series			1426	Flange thickness	[mm]	L7	14
Nominal diameter	[mm]	dN	32	Dynamic load capacity	[kN]	Ca	25,70
Lead	[mm]	P	20	Static load capacity	[kN]	C0a	35,30
Ball circles		i	1,5+1,5	Ball diameter	[mm]	dW	6
Additional wiper extensions for combination wipers	[mm]	LA	12	DN-value			128000
Pilot Length	[mm]	L1	20	No. of starts			2
Pilot diameter	[mm]	D1	56	Stiffness	[N/μm]	Rnu,ar	190
Pilot diameter tolerance	[mm]		g6	Friction torque FROM	[Ncm]		13,2
Bolt circle diameter	[mm]	D4	71	Friction torque TO	[Ncm]		39,5
Flange hole diameter		D5	9	Max. preload	[kN]		2,056
Lube hole	[mm]	DS	M6	Accuracy			P
Flange diameter	[mm]	D6	80	Nut length	[mm]	L	85
Flange flat dimension	[mm]	H	32,5	Wiper extension	[mm]	L3	7

August Steinmeyer GmbH & Co. KG | Riedstraße 7 | 72458 Albstadt | Phone +49 (0) 7431 1288-0 | Fax +49 (0) 7431 1288-89 | [info@steinmeyer.com](mailto:info@steinmeyer.com)

Drive Technology, Ball Screws, Precision Ball Screws, Miniature Ball Screws, Ultra Thrust Ball Screws, Rotating Nuts, Cooled Ball Screws, Precision Lead Screws, Differential Rolled Screws, Rolled Ball Screws