

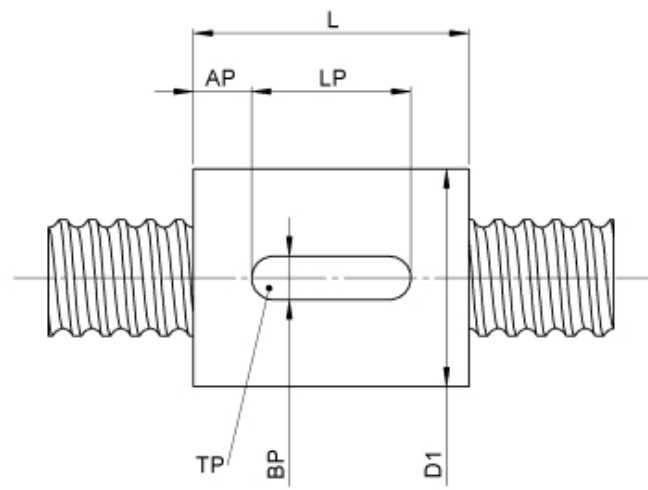
1214/5.32.3,5.3

DESCRIPTION

- Nut Series 1214 with [internal ball return](#)
- Cylindrical nut with 4-point-contact, without wipers
- Nut shape design for assembling in a housing
- Single start ball thread, ground execution according to accuracy class P1 - P5
- Miniature ball screws also available with axial play



TECHNICAL DATA AND DIMENSIONS



Series			1214	Friction torque FROM		[Ncm]	8,2
Nominal diameter	[mm]	dN	32	Friction torque TO		[Ncm]	24,6
Lead	[mm]	P	5	Max. preload		[kN]	1,28
Ball circles		i	1x3	Accuracy			P
Ball diameter	[mm]	dW	3,5	Nut length		[mm]	L 28
DN-value			105600	Dynamic load capacity		[kN]	Ca 16,00
No. of starts			1	Static load capacity		[kN]	C0a 29,80
Stiffness	[N/μm]	Rnu,ar	350	Pilot diameter		[mm]	D1 48

August Steinmeyer GmbH & Co. KG | Riedstraße 7 | 72458 Albstadt | Phone +49 (0) 7431 1288-0 | Fax +49 (0) 7431 1288-89 | info@steinmeyer.com

Drive Technology, Ball Screws, Precision Ball Screws, Miniature Ball Screws, Ultra Thrust Ball Screws, Rotating Nuts, Cooled Ball Screws, Precision Lead Screws, Differential Rolled Screws, Rolled Ball Screws