

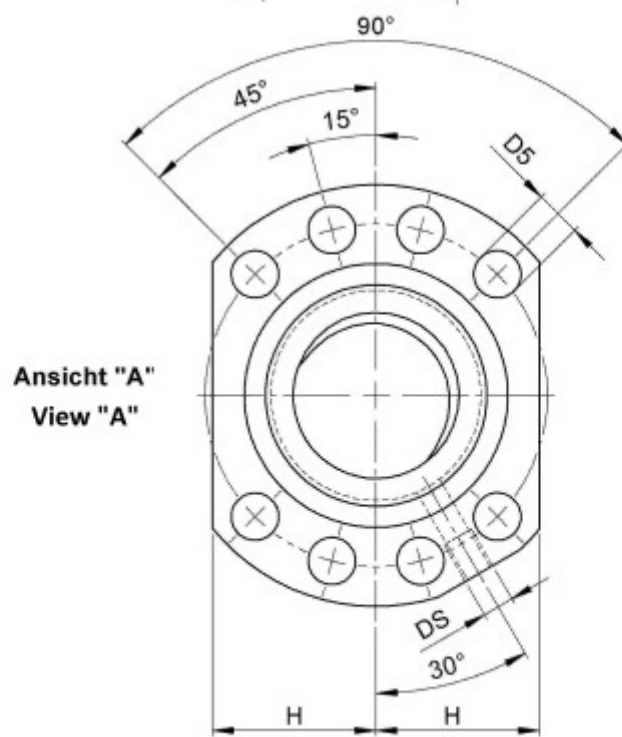
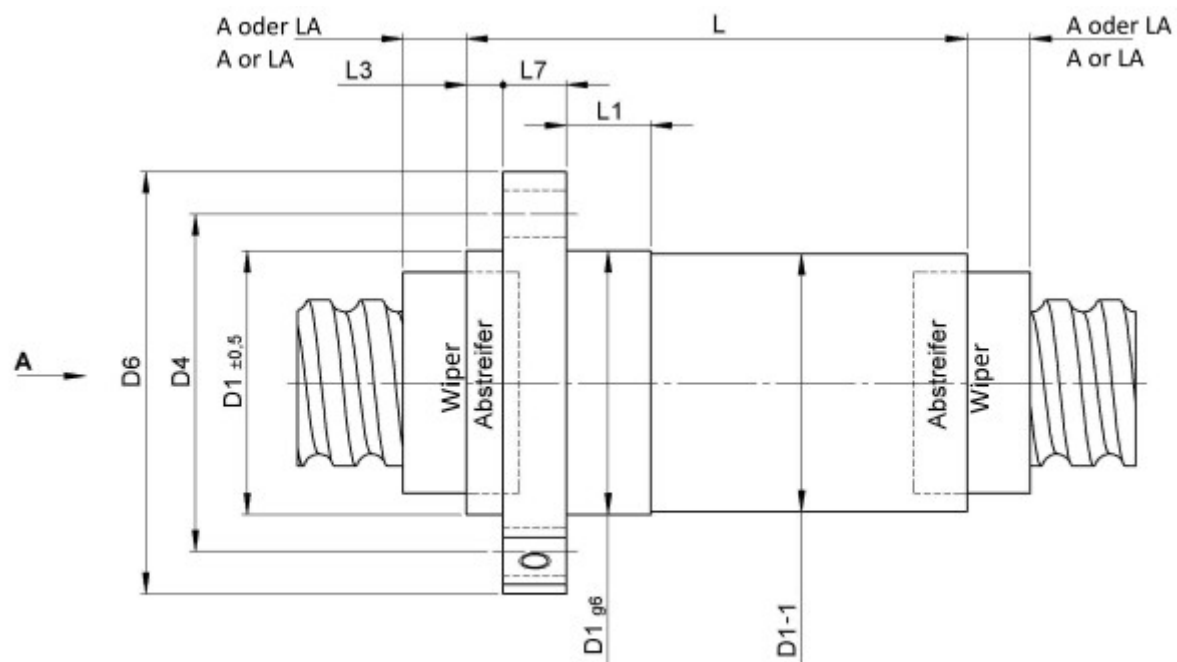
1414/12.50.7,5.7

DESCRIPTION

- Nut Series 1414 with [internal ball return](#), Flange single nut with 4-point-contact, with standard wipers on both ends
- Nut shape design for direct assembly of angular bearing, locknut and pulley
- Single start ball thread, ground execution according to accuracy class P1 - P5



TECHNICAL DATA AND DIMENSIONS



Form B
Shape B

Series			1414	Friction torque FROM		[Ncm]	122,1
Nominal diameter	[mm]	dN	50	Friction torque TO		[Ncm]	226,7
Lead	[mm]	P	12	Max. preload		[kN]	8,72
Ball circles		i	1x7	Accuracy			P
Ball diameter	[mm]	dW	7,5	Nut length		[mm]	L 151
DN-value			125000	Dynamic load capacity		[kN]	Ca 109,00
No. of starts			1	Static load capacity		[kN]	C0a 217,30
Stiffness	[N/μm]	Rnu,ar	1110	Flange diameter		[mm]	D6 110

August Steinmeyer GmbH & Co. KG | Riedstraße 7 | 72458 Albstadt | Phone +49 (0) 7431 1288-0 | Fax +49 (0) 7431 1288-89 | info@steinmeyer.com

Drive Technology, Ball Screws, Precision Ball Screws, Miniature Ball Screws, Ultra Thrust Ball Screws, Rotating Nuts, Cooled Ball Screws, Precision Lead Screws, Differential Rolled Screws, Rolled Ball Screws