

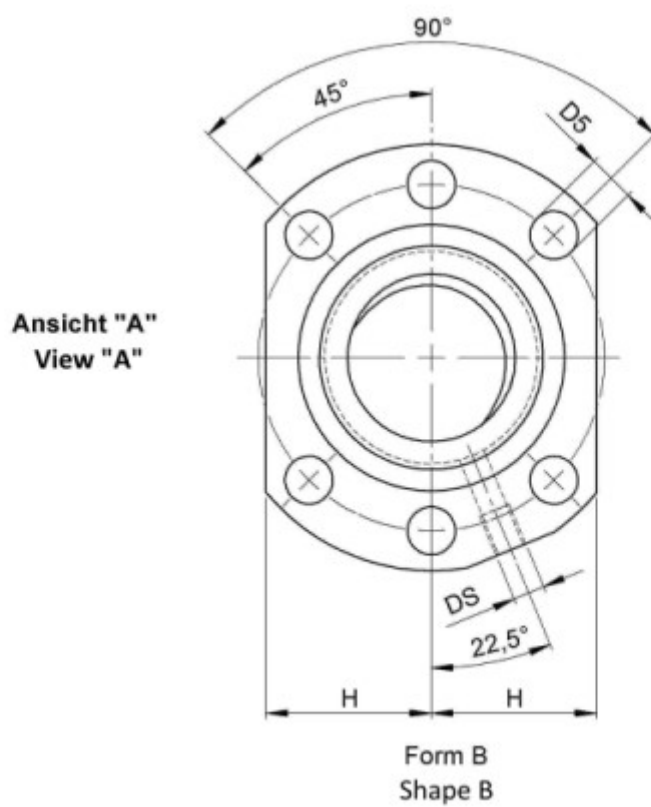
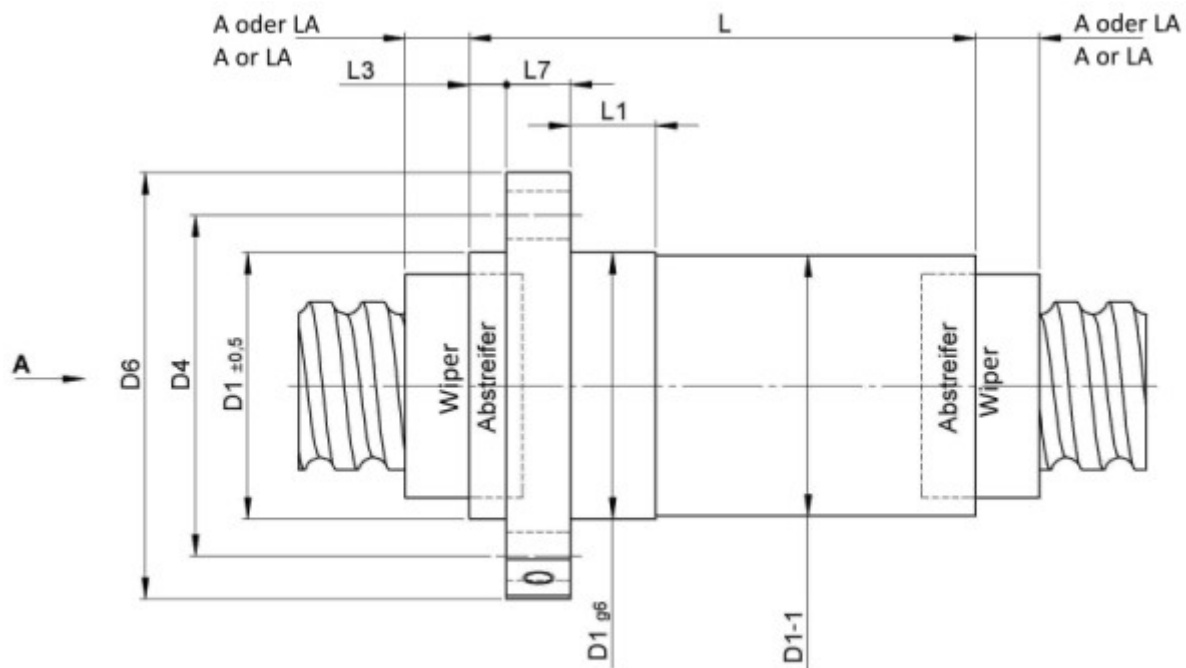
2426/20.20.3,5.6

DESCRIPTION

- Nut Series 2426 with [end cap ball return](#), Flange single nut with 4-point-contact with standard synthetic wipers on both ends
- Nut shape according to DIN for assembly by flange
- Multiple start ball thread, ground execution according to accuracy class P1 - P5



TECHNICAL DATA AND DIMENSIONS



Series		2426		Nut length	[mm]	L	77
Nominal diameter	[mm]	dN	20	Wiper extension	[mm]	L3	7
Lead	[mm]	P	20	Flange thickness	[mm]	L7	10
Ball circles		i	3+3	Dynamic load capacity	[kN]	Ca	21,70
Ball diameter	[mm]	dW	3,5	Static load capacity	[kN]	C0a	35,20
DN-value			160000	No. of starts			2
Additional wiper extensions for combination wipers	[mm]	LA	-	Stiffness	[N/μm]	Rnu,ar	220
Pilot Length	[mm]	L1	16	Pilot diameter	[mm]	D1	36
Pilot diameter tolerance	[mm]		g6	Bolt circle diameter	[mm]	D4	47
Flange hole diameter		D5	6,6	Max. preload	[kN]		1,736
Flange diameter	[mm]	D6	58				

August Steinmeyer GmbH & Co. KG | info@steinmeyer.com

Drive Technology, Ball Screws, Precision Ball Screws, Miniature Ball Screws, Ultra Thrust Ball Screws, Rotating Nuts, Cooled Ball Screws, Precision Lead Screws, Differential Rolled Screws, Rolled Ball Screws