

# 3424/20.32.6.6

---

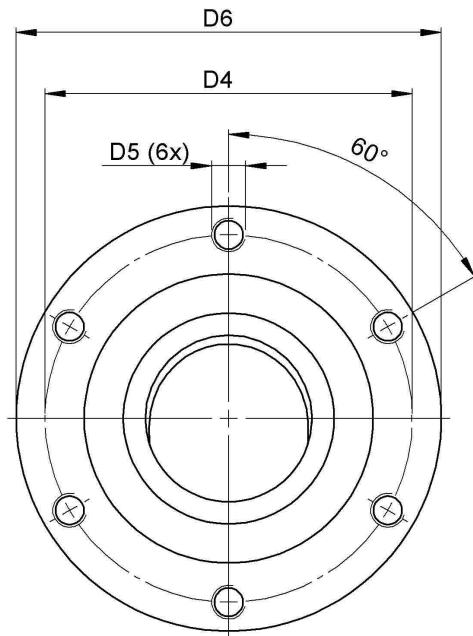
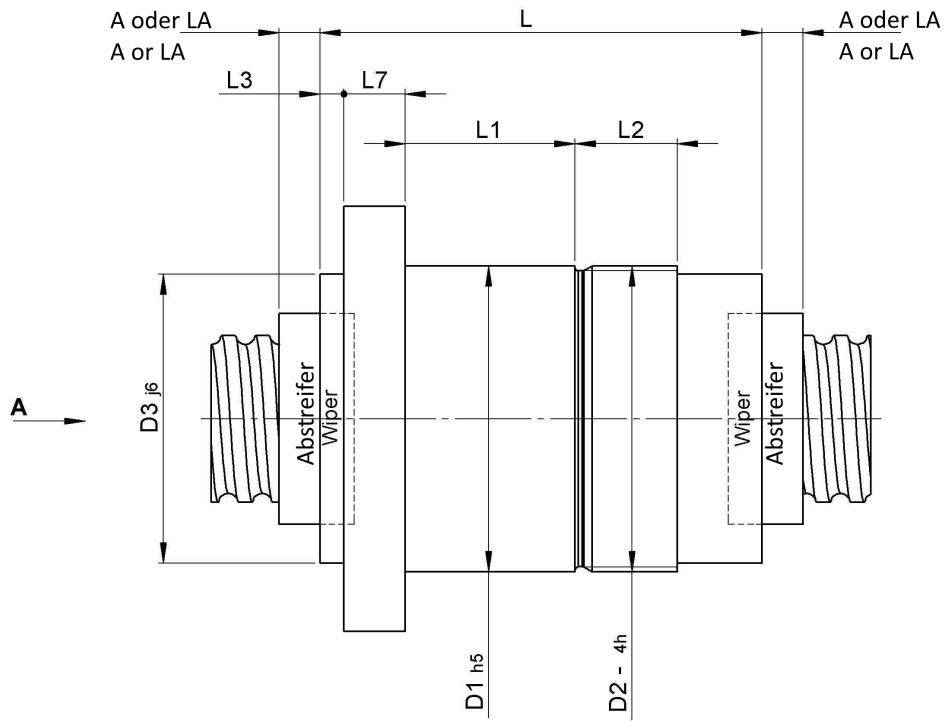
## DESCRIPTION

- Nut Series 3424 with [external ball return](#), Flange single nut with 4-point-contact with standard wipers on both ends
- Nut shape design for direct assembly of angular bearing, locknut and pulley
- Multiple start ball thread, ground execution according to accuracy class P1 - P5

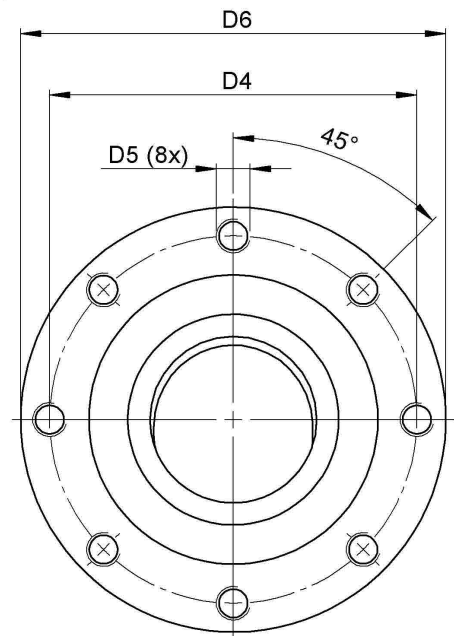


---

## TECHNICAL DATA AND DIMENSIONS



Nenndurchmesser  
25 - 32mm  
Nominal diameter  
25 - 32mm



Nenndurchmesser  
40 - 63mm  
Nominal diameter  
40 - 63mm

Ansicht "A"  
View "A"

Series			3424	Flange thickness	[mm]	L7	14
Nominal diameter	[mm]	dN	32	Thread length	[mm]	L2	20
Lead	[mm]	P	20	Dynamic load capacity	[kN]	Ca	57,90
Ball circles		i	3+3	Static load capacity	[kN]	C0a	100,00
Ball diameter	[mm]	dW	6	DN-value		160000	
Additional wiper extensions	[mm]	LA	12	No. of starts		2	
for combination wipers							
Pilot Length	[mm]	L1	45	Stiffness	[N/μm]	Rnu,ar	530
Pilot diameter tolerance	[mm]		h5	Pilot diameter	[mm]	D1	60
Thread diameter	[mm]	D2	M60x2	Bolt circle diameter	[mm]	D4	71
Diameter for wiper extension [mm]		D3	60	Max. preload	[kN]	4,632	
Flange hole diameter		D5	M6	Nut length	[mm]	L	88
Flange diameter	[mm]	D6	86	Wiper extension	[mm]	L3	7

August Steinmeyer GmbH & Co. KG | Riedstraße 7 | 72458 Albstadt | Phone +49 (0) 7431 1288-0 | Fax +49 (0) 7431 1288-89 | [info@steinmeyer.com](mailto:info@steinmeyer.com)

Drive Technology, Ball Screws, Precision Ball Screws, Miniature Ball Screws, Ultra Thrust Ball Screws, Rotating Nuts, Cooled Ball Screws, Precision Lead Screws, Differential Rolled Screws, Rolled Ball Screws