

# 1516/20.63.11.4

---

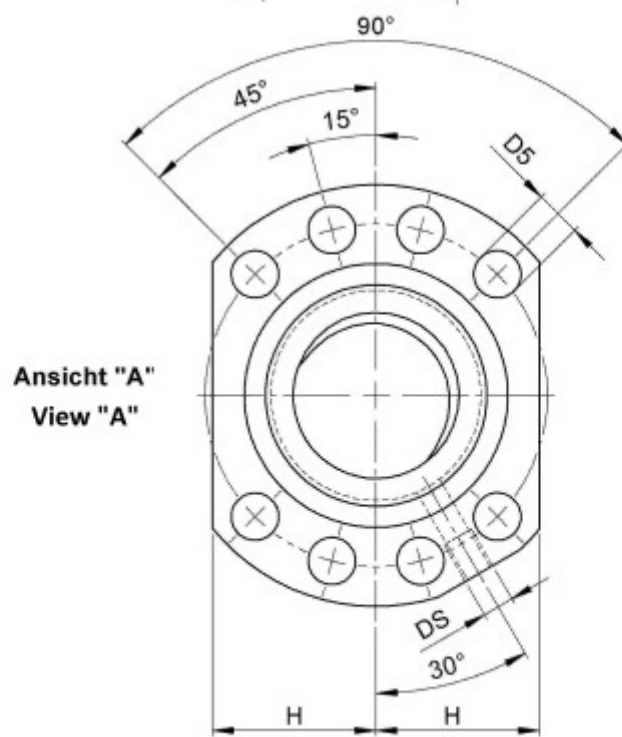
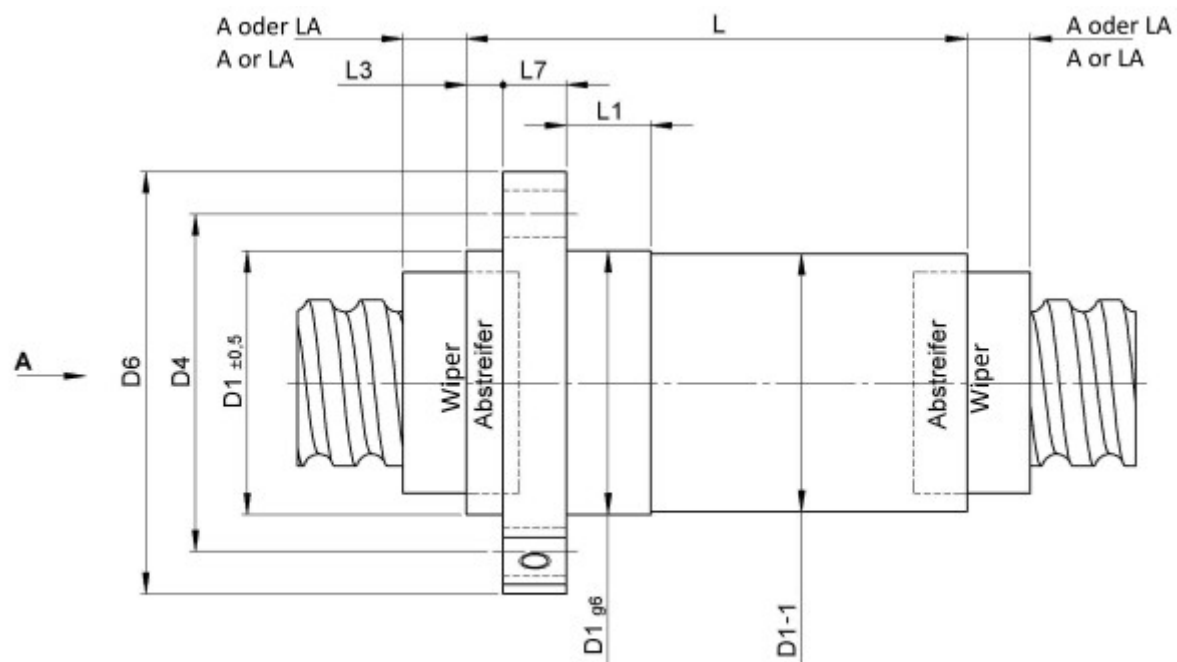
## DESCRIPTION

- Nut Series 1516 with [internal ball return](#), Flange double nut with 2-point-contact, with standard synthetic wipers on both ends
- Nut shape according to DIN for assembly by flange
- Single start ball thread, ground execution according to accuracy class P1 - P5



---

## TECHNICAL DATA AND DIMENSIONS



Form B  
Shape B

Series			1516	Nut length	[mm]	L	277
Nominal diameter	[mm]	dN	63	Wiper extension	[mm]	L3	7
Lead	[mm]	P	20	Flange thickness	[mm]	L7	20
Ball circles		i	2x4	Dynamic load capacity	[kN]	Ca	147,70
Ball diameter	[mm]	dW	11	Static load capacity	[kN]	C0a	278,80
DN-value			120000	No. of starts			1
Additional wiper extensions	[mm]	LA	12	Stiffness	[N/μm]	Rnu,ar	1410
for combination wipers							
Pilot Length	[mm]	L1	25	Pilot diameter	[mm]	D1	95
Pilot diameter tolerance	[mm]		g6	Bolt circle diameter	[mm]	D4	115
Flange hole diameter		D5	13,5	Max. preload	[kN]		14,77
Flange diameter	[mm]	D6	135				

August Steinmeyer GmbH & Co. KG | Riedstraße 7 | 72458 Albstadt | Phone +49 (0) 7431 1288-0 | Fax +49 (0) 7431 1288-89 | [info@steinmeyer.com](mailto:info@steinmeyer.com)

Drive Technology, Ball Screws, Precision Ball Screws, Miniature Ball Screws, Ultra Thrust Ball Screws, Rotating Nuts, Cooled Ball Screws, Precision Lead Screws, Differential Rolled Screws, Rolled Ball Screws