

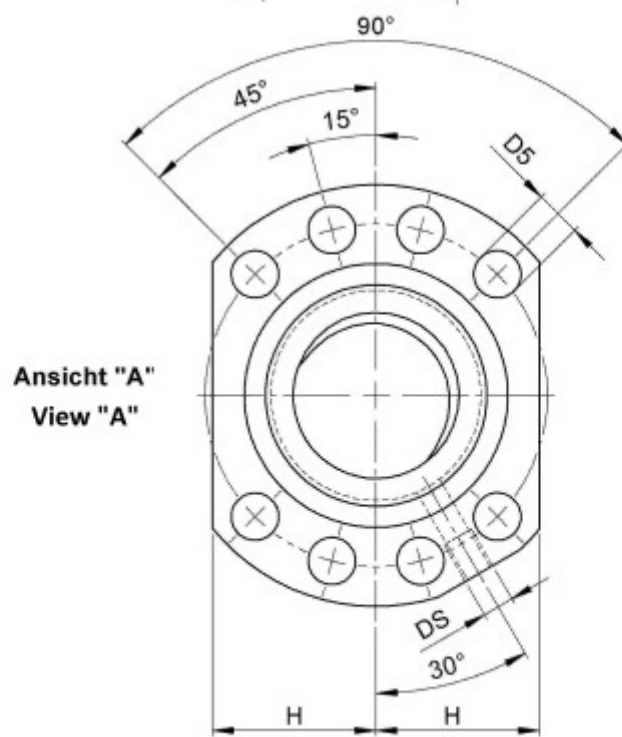
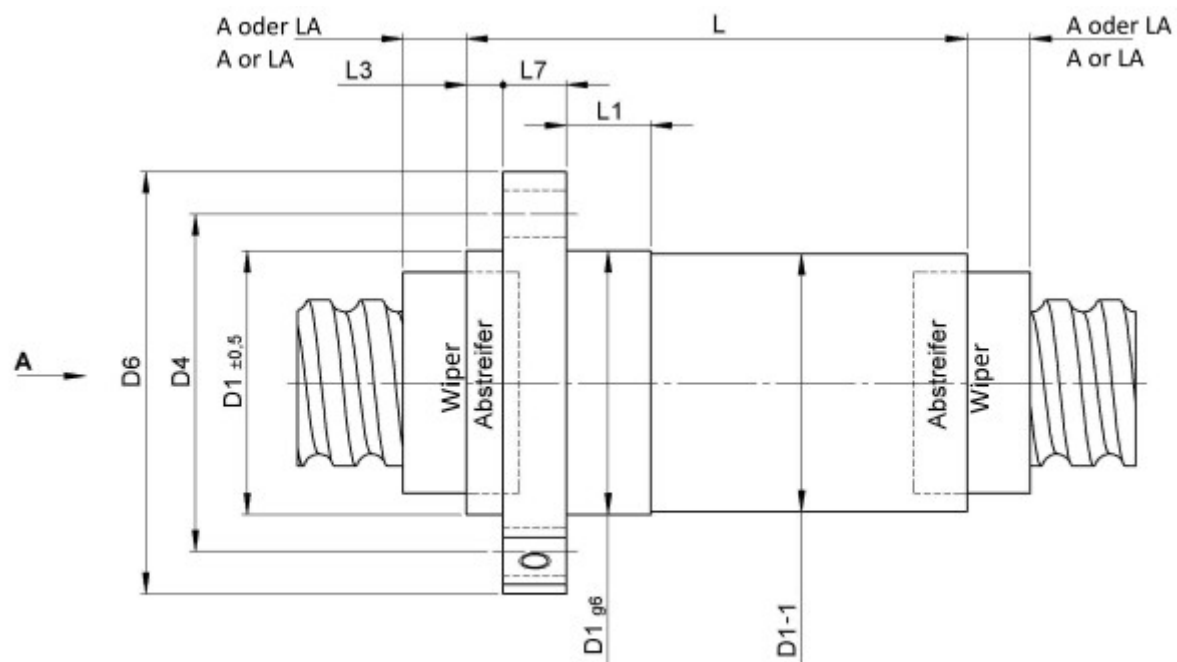
1516/20.80.11.6E

DESCRIPTION

- **ETA+ Nut Series** with **internal ball return**
- Flange nut, with standard wipers on both ends
- Nut shape according to DIN for assembly by flange
- Single start ball thread, ground execution according to accuracy class P1 - P5



TECHNICAL DATA AND DIMENSIONS



Form B
Shape B

Series			1516	Nut length	[mm]	L	386
Nominal diameter	[mm]	dN	80	Wiper extension	[mm]	L3	7
Lead	[mm]	P	20	Flange thickness	[mm]	L7	25
Ball circles		i	2x6	Dynamic load capacity	[kN]	Ca	313,90
Ball diameter	[mm]	dW	11	Static load capacity	[kN]	C0a	617,20
DN-value			120000	No. of starts			1
Additional wiper extensions	[mm]	LA	12	Stiffness	[N/μm]	Rnu,ar	2950
for combination wipers							
Pilot Length	[mm]	L1	25	Pilot diameter	[mm]	D1	125
Pilot diameter tolerance	[mm]		g6	Bolt circle diameter	[mm]	D4	145
Flange hole diameter		D5	13,5	Max. preload	[kN]		31,39
Flange diameter	[mm]	D6	165				

August Steinmeyer GmbH & Co. KG | Riedstraße 7 | 72458 Albstadt | Phone +49 (0) 7431 1288-0 | Fax +49 (0) 7431 1288-89 | info@steinmeyer.com

Drive Technology, Ball Screws, Precision Ball Screws, Miniature Ball Screws, Ultra Thrust Ball Screws, Rotating Nuts, Cooled Ball Screws, Precision Lead Screws, Differential Rolled Screws, Rolled Ball Screws