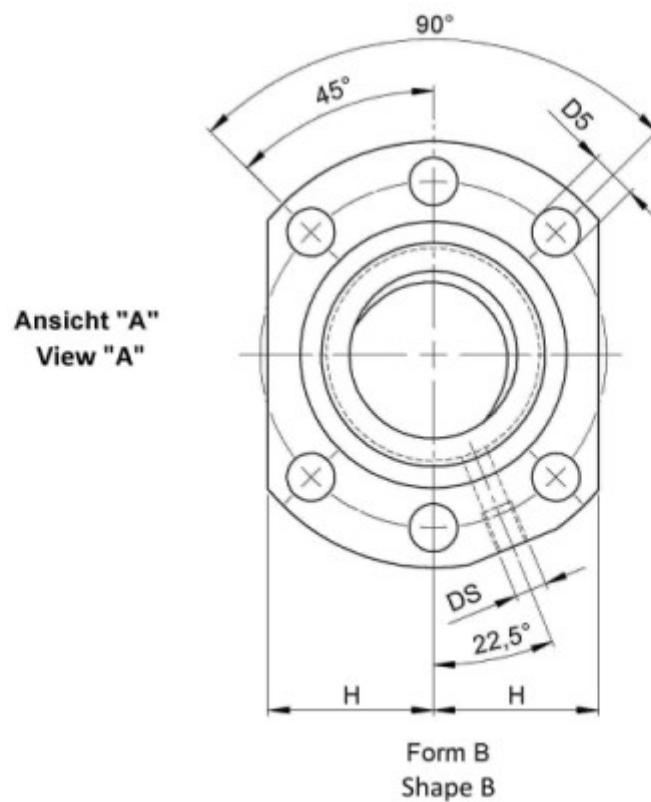
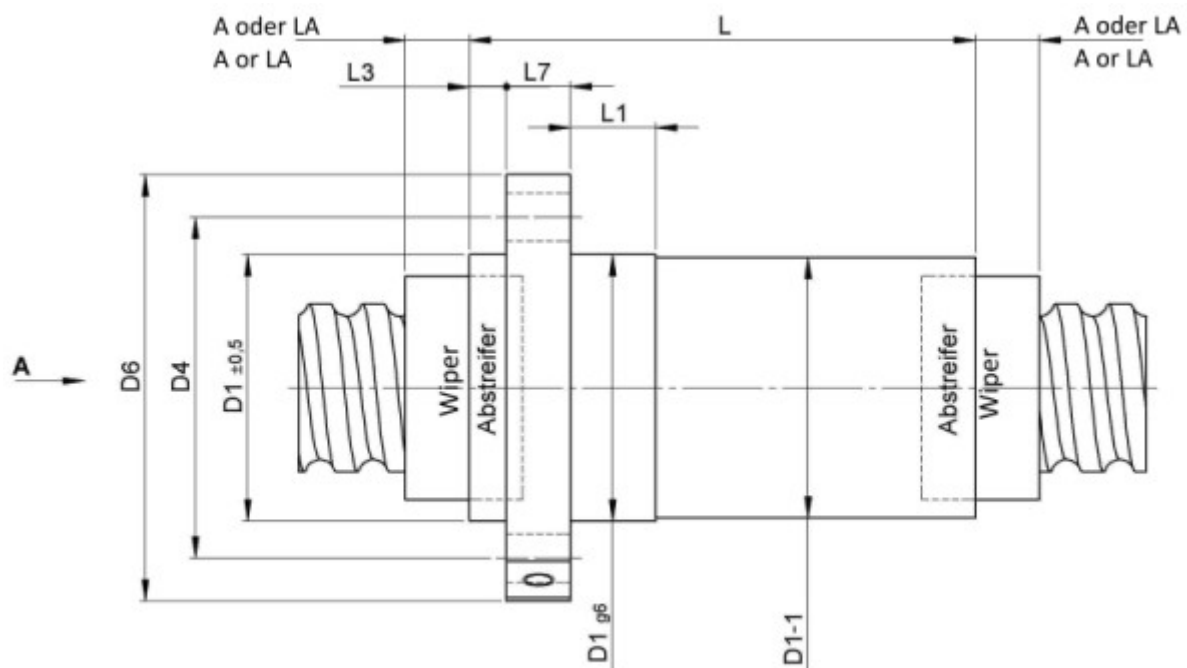


# 1436/5.20.3,5.2

## DESCRIPTION

## TECHNICAL DATA AND DIMENSIONS



Series			1436	Wiper extension	[mm]	L3	6
Nominal diameter	[mm]	dN	20	Flange thickness	[mm]	L7	10
Lead	[mm]	P	5	Dynamic load capacity	[kN]	Ca	8,60
Ball circles		i	1x2	Static load capacity	[kN]	C0a	11,20
Ball diameter	[mm]	dW	3,5	DN-value			82000
Additional wiper extensions	[mm]	LA	9	No. of starts			1
for combination wipers							
Pilot Length	[mm]	L1	10	Pilot diameter	[mm]	D1	36
Pilot diameter tolerance	[mm]		g6	Bolt circle diameter	[mm]	D4	47
Flange hole diameter		D5	6,6	Nut length	[mm]	L	48
Flange diameter	[mm]	D6	58				

August Steinmeyer GmbH & Co. KG | [info@steinmeyer.com](mailto:info@steinmeyer.com)

Drive Technology, Ball Screws, Precision Ball Screws, Miniature Ball Screws, Ultra Thrust Ball Screws, Rotating Nuts, Cooled Ball Screws, Precision Lead Screws, Differential Rolled Screws, Rolled Ball Screws