

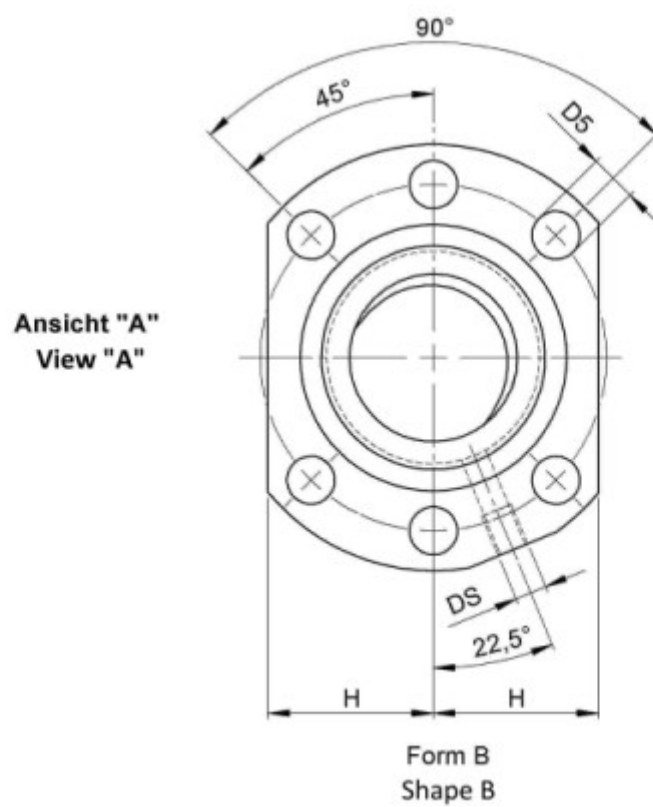
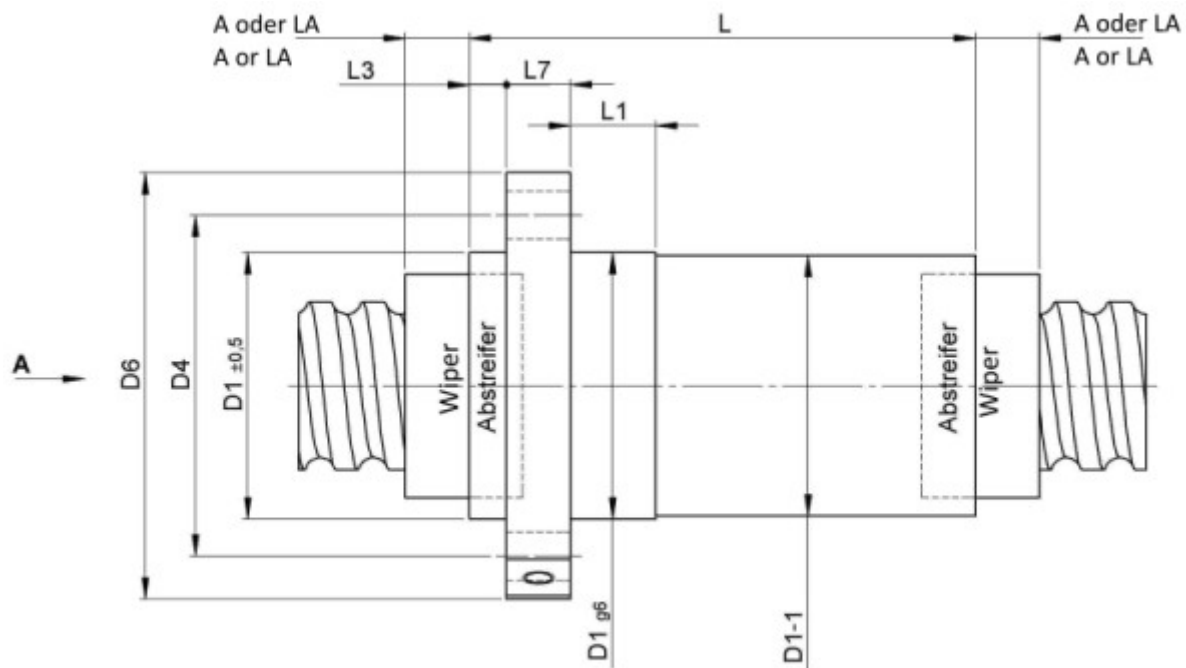
1416/10.25.3,5.2

DESCRIPTION

- Nut Series 1416 with [internal ball return](#), Flange single nut with 4-point-contact with standard synthetic wipers on both ends
- Nut shape according to DIN for assembly by flange
- Single start ball thread, ground execution according to accuracy class P1 - P5



TECHNICAL DATA AND DIMENSIONS



| | | | | | | | |
|-----------------------------|------|----|--------|-----------------------|--------|--------|-------|
| Series | | | 1416 | Nut length | [mm] | L | 64 |
| Nominal diameter | [mm] | dN | 25 | Wiper extension | [mm] | L3 | 7 |
| Lead | [mm] | P | 10 | Flange thickness | [mm] | L7 | 10 |
| Ball circles | | i | 1x2 | Dynamic load capacity | [kN] | Ca | 9,60 |
| Ball diameter | [mm] | dW | 3,5 | Static load capacity | [kN] | C0a | 14,30 |
| DN-value | | | 120000 | No. of starts | | | 1 |
| Additional wiper extensions | [mm] | LA | 12 | Stiffness | [N/μm] | Rnu,ar | 150 |
| for combination wipers | | | | | | | |
| Pilot Length | [mm] | L1 | 16 | Pilot diameter | [mm] | D1 | 40 |
| Pilot diameter tolerance | [mm] | | g6 | Bolt circle diameter | [mm] | D4 | 51 |
| Flange hole diameter | | D5 | 6,6 | Max. preload | [kN] | | 0,768 |
| Flange diameter | [mm] | D6 | 62 | | | | |

August Steinmeyer GmbH & Co. KG | info@steinmeyer.com

Drive Technology, Ball Screws, Precision Ball Screws, Miniature Ball Screws, Ultra Thrust Ball Screws, Rotating Nuts, Cooled Ball Screws, Precision Lead Screws, Differential Rolled Screws, Rolled Ball Screws