

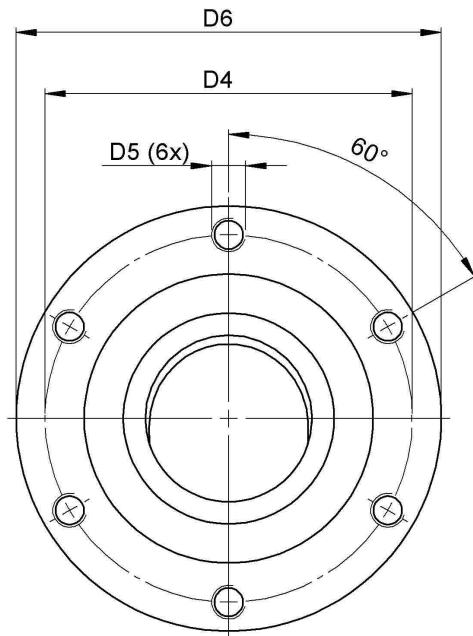
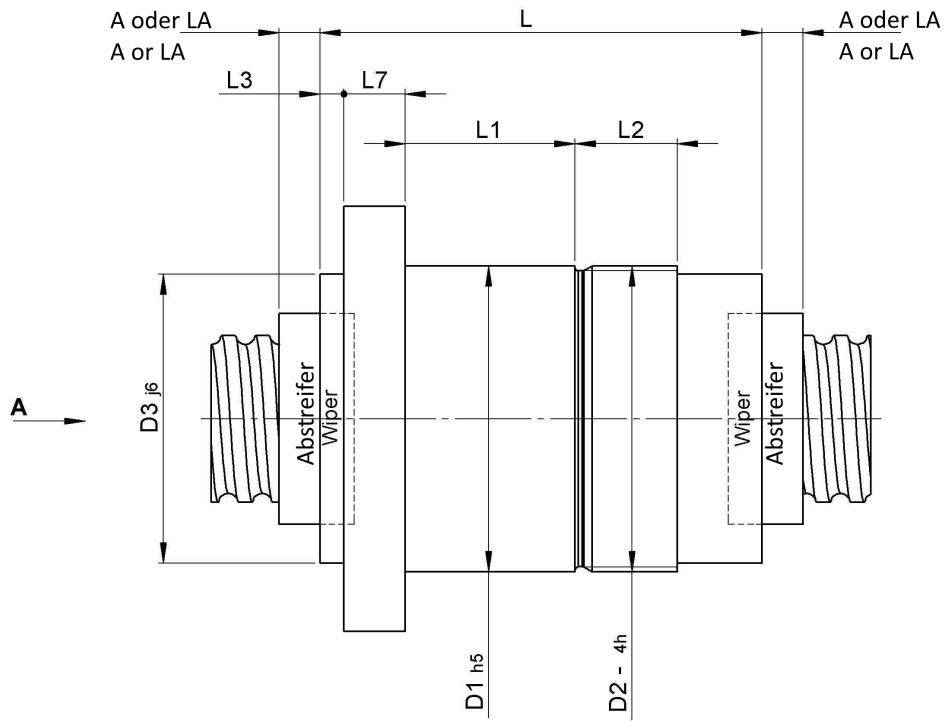
1414/10.32.6.5

DESCRIPTION

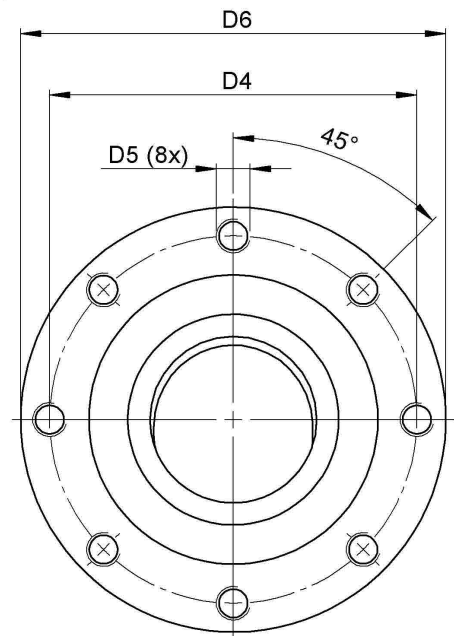
- Nut Series 1414 with [internal ball return](#), Flange single nut with 4-point-contact, with standard wipers on both ends
- Nut shape design for direct assembly of angular bearing, locknut and pulley
- Single start ball thread, ground execution according to accuracy class P1 - P5



TECHNICAL DATA AND DIMENSIONS



Nenndurchmesser
25 - 32mm
Nominal diameter
25 - 32mm



Nenndurchmesser
40 - 63mm
Nominal diameter
40 - 63mm

Ansicht "A"
View "A"

Series			1414	Flange thickness	[mm]	L7	12
Nominal diameter	[mm]	dN	32	Thread length	[mm]	L2	20
Lead	[mm]	P	10	Dynamic load capacity	[kN]	Ca	47,80
Ball circles		i	1x5	Static load capacity	[kN]	C0a	76,00
Ball diameter	[mm]	dW	6	DN-value			120000
Additional wiper extensions	[mm]	LA	12	No. of starts			1
for combination wipers							
Pilot Length	[mm]	L1	34	Stiffness	[N/μm]	Rnu,ar	490
Pilot diameter tolerance	[mm]		h5	Pilot diameter	[mm]	D1	50
Thread diameter	[mm]	D2	M50x1,5	Bolt circle diameter	[mm]	D4	65
Diameter for wiper extension	[mm]	D3	50	Max. preload	[kN]		3,824
Flange hole diameter		D5	M6	Nut length	[mm]	L	104
Flange diameter	[mm]	D6	80	Wiper extension	[mm]	L3	7

August Steinmeyer GmbH & Co. KG | info@steinmeyer.com

Drive Technology, Ball Screws, Precision Ball Screws, Miniature Ball Screws, Ultra Thrust Ball Screws, Rotating Nuts, Cooled Ball Screws, Precision Lead Screws, Differential Rolled Screws, Rolled Ball Screws